

## CONTENTS

Table No.	Title	Page No.
	Index of the Industrial Production in Khyber Pakhtunkhwa	i - vii
	Analytical note on Industrial Production and Employment in Khyber Pakhtunkhwa September 2013.	1 - 2
1	Number of reporting units of selected items of regarding selected Large Scale Industries in Khyber Pakhtunkhwa during September 2013, August 2013 and August 2012.	3
2	Production of selected items regarding selected Large Scale Industries in Khyber Pakhtunkhwa during September 2013 & August 2012.	4
3	Production of selected items regarding selected Large Scale Industries in Khyber Pakhtunkhwa during September 2013 & August 2012.	5
4	Production of selected items regarding selected Large Scale Industries in Khyber Pakhtunkhwa during July-September 2012-13 & July-August 2013-14.	6
5	Total Employment in selected Large Scale Industries in Khyber Pakhtunkhwa during September 2013, August 2013 & September 2012.	7
6	Number of Production workers in selected Large Scale Industries in Khyber Pakhtunkhwa during September 2013, August 2013 & September 2012.	8
<b>Annexure</b>		
i.	Beverages Industry	9
ii.	Cement Industry	10
iii.	Ceramics Industry	11
iv.	Cigarettes Industry	12
v.	Cotton Textile Industry	13
vi.	Electric Bulb Industry	14
vii.	Fertilizer Industry	15
viii.	Matches Industry	16
ix.	Paints Industry	17
x.	Paper & Paper Board Industry	18
xi.	Pharmaceutical	19
xii.	Sugar Industry	20
xiii.	Vegetable Ghee Industry	21
xiv.	Woollen Textile Industry	22

RESTRICTED  
For Official Use Only  
**SEPTEMBER 2013**



**MONTHLY SURVEY  
OF  
INDUSTRIAL  
PRODUCTION & EMPLOYMENT  
IN THE  
KHYBER PAKHTUNKHWA**

**BUREAU OF STATISTICS  
PLANNING & DEVELOPMENT DEPARTMENT  
GOVERNMENT OF KHYBER PAKHTUNKHWA  
P E S H A W A R**

# **PREFACE**

The Monthly Survey of Industrial Production and Employment is the regular monthly publication of the Bureau of Statistics, Khyber Pakhtunkhwa. It was initiated in 1976 consisting of four Industries, i.e. (1). Sugar, (2). Tobacco, (3). Cement and (4). Paper & Paper Board. The coverage went on increasing and the current issue covers information of 16 various types of large scale manufacturing industries, consisting of 107 total industrial units in Khyber Pakhtunkhwa.

2. This publication provides full information on production and employment of the various types of large scale manufacturing industries situated in the Khyber Pakhtunkhwa. The information covers in terms of quantity and value produced during the month compared with the information of the corresponding month of the previous year. The information regarding progressive total quantity and value of the various types of manufacturing units for the period starting from 1st September up to the reporting month of the current financial year as compared with the corresponding period of the previous financial year are included in this monthly publication.

3. An effort has been made to improve the contents and quality of the report according to the directions of the panel on the industrial statistics of the Federal Statistics Division and any advice/suggestion for its further improvement will be appreciated.

4. This publication, it is hoped, will serve the needs of a large number of users of the current data on manufacturing sector of the Khyber Pakhtunkhwa for decision and policy making including planning purposes.

**(JAVED IQBAL)**  
DIRECTOR  
BUREAU OF STATISTICS,  
KHYBER PAKHTUNKHWA, PESHAWAR.

Dated \_\_\_\_/\_\_\_\_/2013

## IMPORTANT

### COVERAGE

A total number of 89 factories have been covered in the Monthly Survey Report of the month of September 2013. Some of the factories produce more than one item but for reporting purposes the factory is counted for one time in the total.

2. In the table of production each factory has been counted against every item it produces.

3. Employment data for a factory is shown only once against the industry in which it is classified on the basis of its major products even though it produces more than one item included in the survey.

# MONTHLY SURVEY OF INDUSTRIAL PRODUCTION AND EMPLOYMENT IN THE KHYBER PAKHTUNKHWA, SEPTEMBER-2013

## Coverage

This Survey report covers 97 Industrial units pertaining to 16 Large Scale Industries manufacturing 35 items. which contribute about 36% of the Total Value Added of Large-Scale Manufacturing Sector in the Khyber Pakhtunkhwa

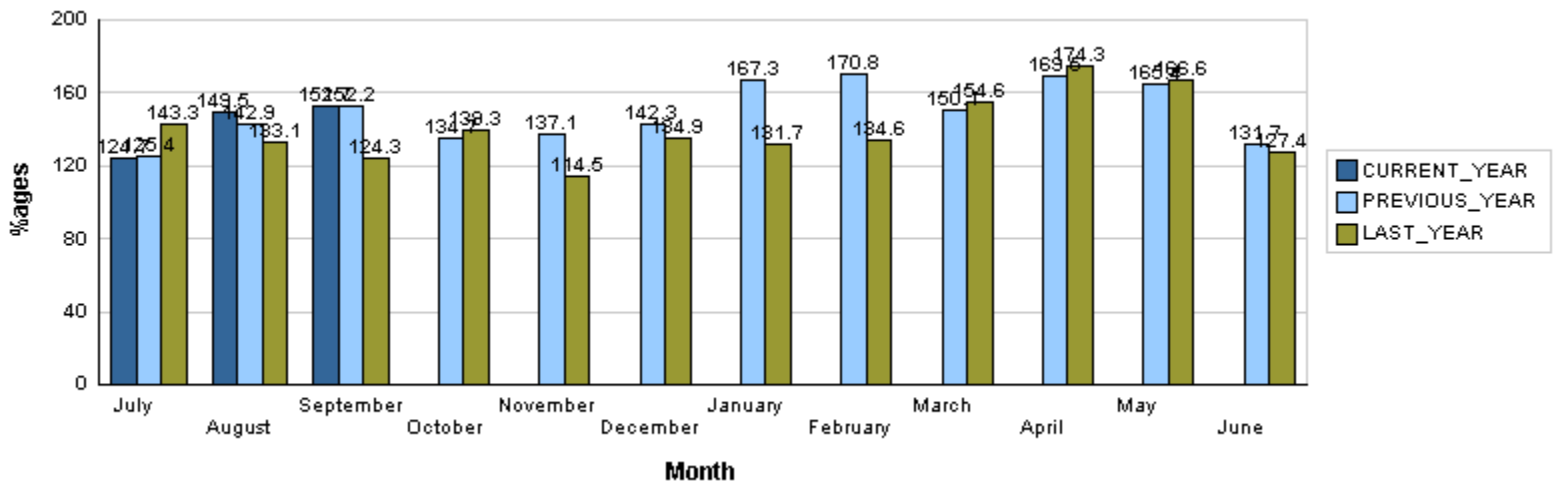
## INDUSTRIAL PRODUCTION INDEX

Industrial Production Index for the month of Sep-2013 stood at against 152.71 and 149.51 as compared to Aug-2013. Index Series from Sep-2013 is given as under

### INDEX OF INDUSTRIAL PRODUCTION IN THE KHYBER PAKHTUNKHWA (BASE: 2005-06 = 100)

Month	2010-11	2011-12	2012-13	2013-14
July	148.93	143.34	125.35	124.66
August	128.38	133.12	142.93	149.51
September	122.16	124.26	152.22	152.71
October	134.85	139.33	134.68	0.00
November	113.33	114.48	137.09	0.00
December	125.19	134.92	142.33	0.00
January	134.09	131.72	167.33	0.00
February	144.11	134.58	170.75	0.00
March	149.81	154.65	150.06	0.00
April	144.47	174.31	169.54	0.00
May	161.92	166.59	165.37	0.00
June	148.21	127.42	131.73	0.00
<b>Monthly Average</b>	<b>137.95</b>	<b>139.89</b>	<b>149.12</b>	

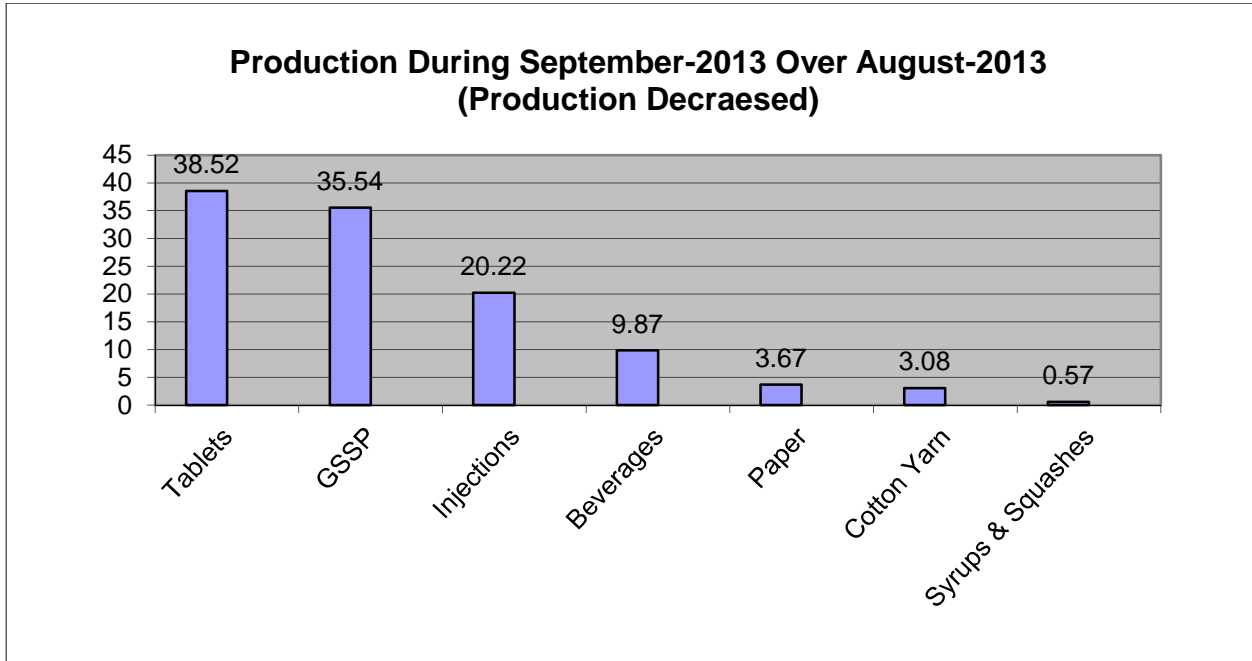
### INDEX OF INDUSTRIAL PRODUCTION IN THE KHYBER PAKHTUNKHWA (BASE: 2005-06 = 100)



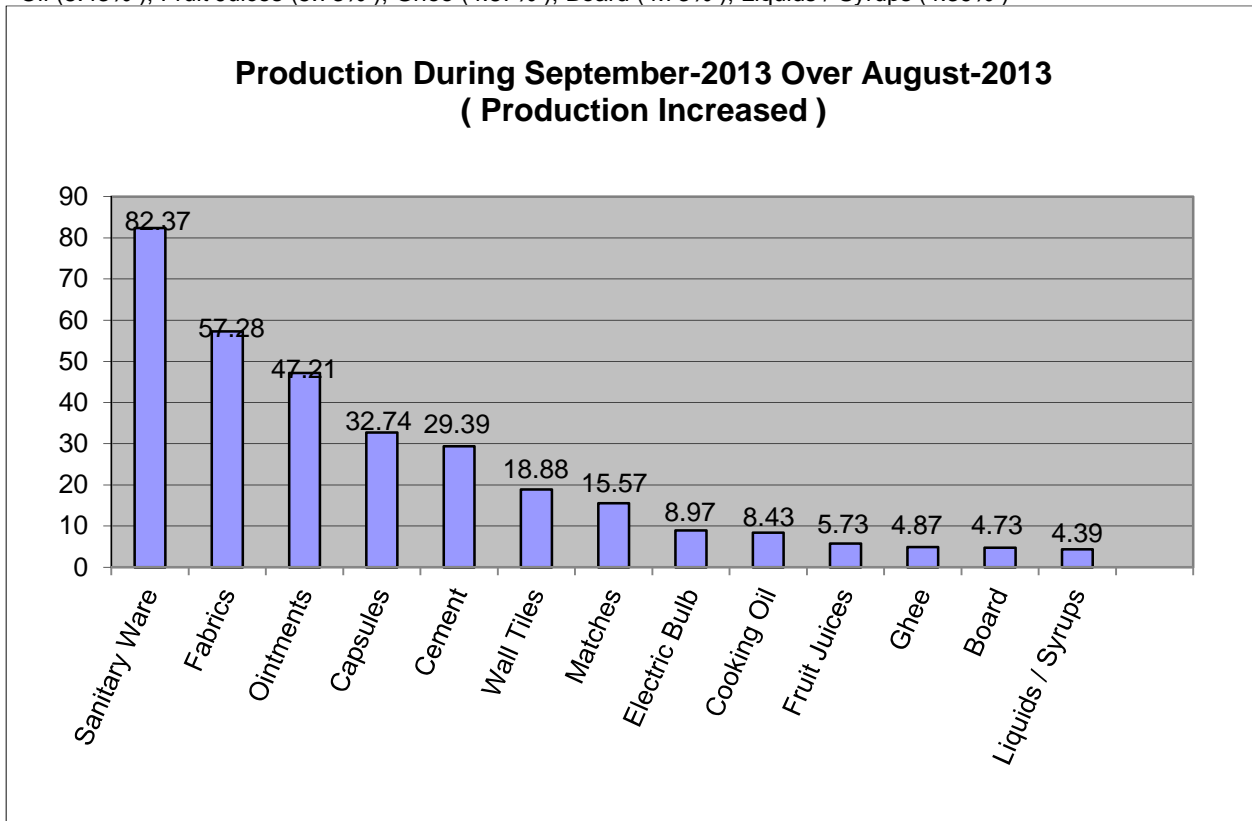
## PRODUCTION DURING SEPTEMBER-2013 VS AUGUST -2013

Overall production during the month of September-2013 over August -2013 was 100% Lower than August -2013.

The production was lower in case of Tablets (38.52%), Gssp (35.54%), Injections (20.22%), Beverages (9.87%), Paper (3.67%), Cotton Yarn (3.08%), Syrups & Squashes (0.57%)

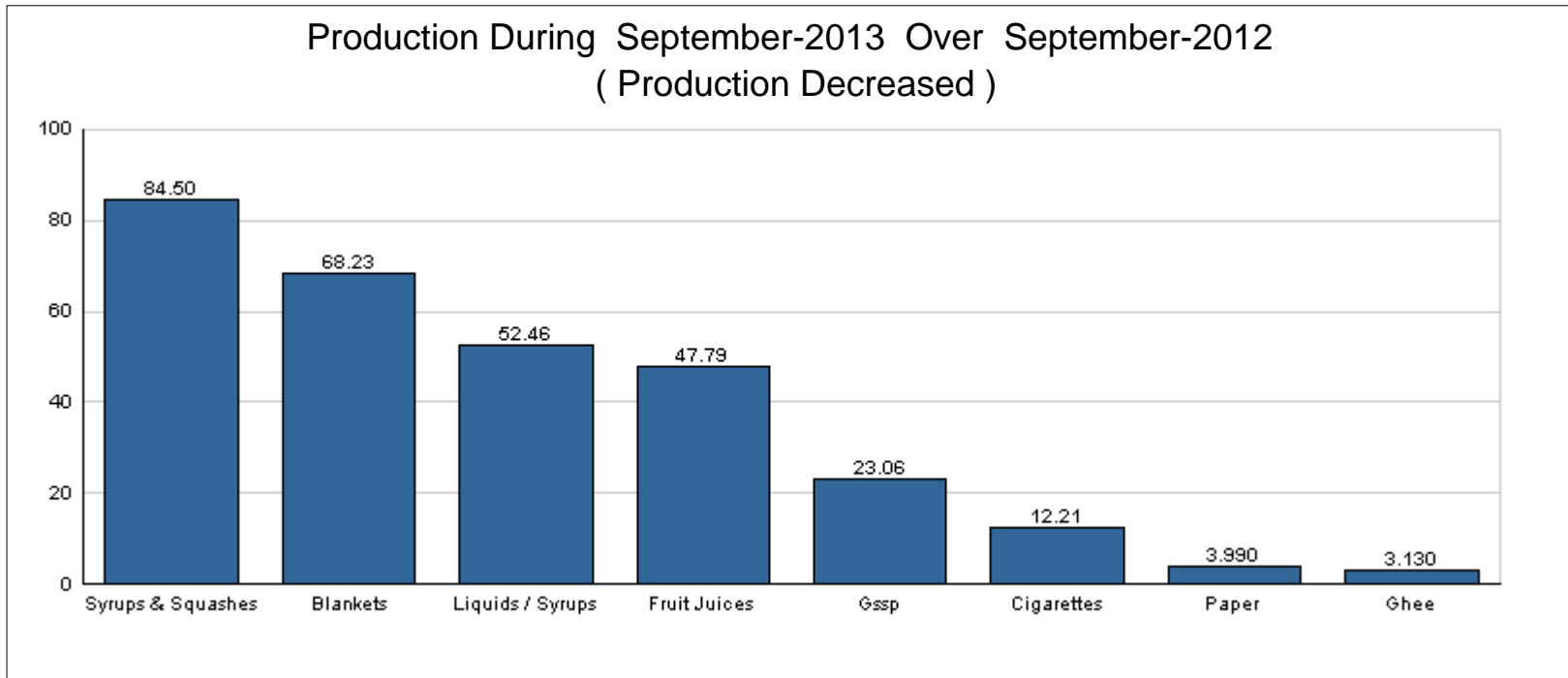


The production was higher in case of Sanitary Ware (82.37%), Fabrics (57.28%), Ointments (47.21%), Capsules (32.74%), Cement (29.39%), Wall Tiles (18.88%), Matches (15.57%), Electric Bulb (8.97%), Cooking Oil (8.43%), Fruit Juices (5.73%), Ghee (4.87%), Board (4.73%), Liquids / Syrups (4.39%)

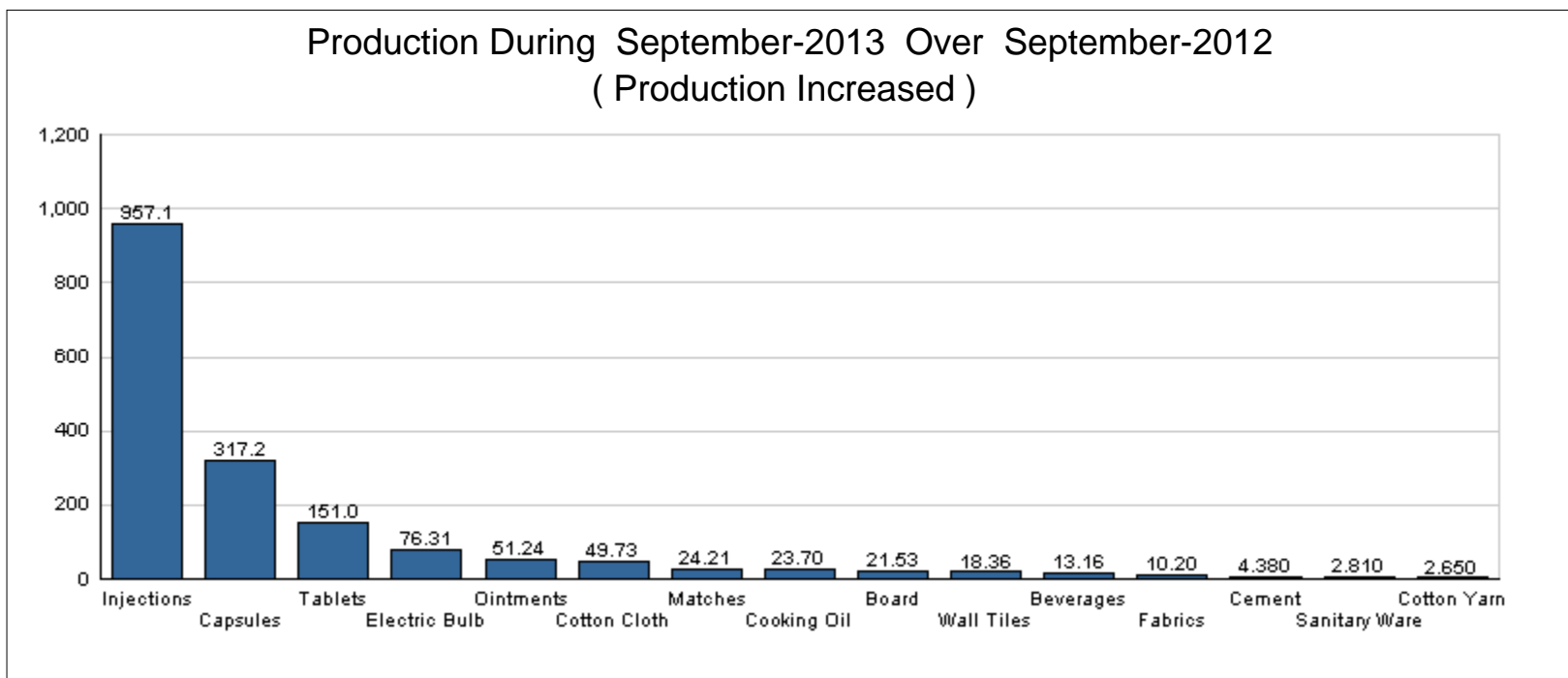


## PRODUCTION DURING SEPTEMBER-2013 VS SEPTEMBER-2012

The Production was lower in case of Syrups & Squashes (84.5% ), Blankets (68.23% ), Liquids / Syrups (52.46% ), Fruit Juices (47.79% ), Gssp (23.06% ), Cigarettes (12.21% ), Paper (3.99% ), Ghee (3.13% )

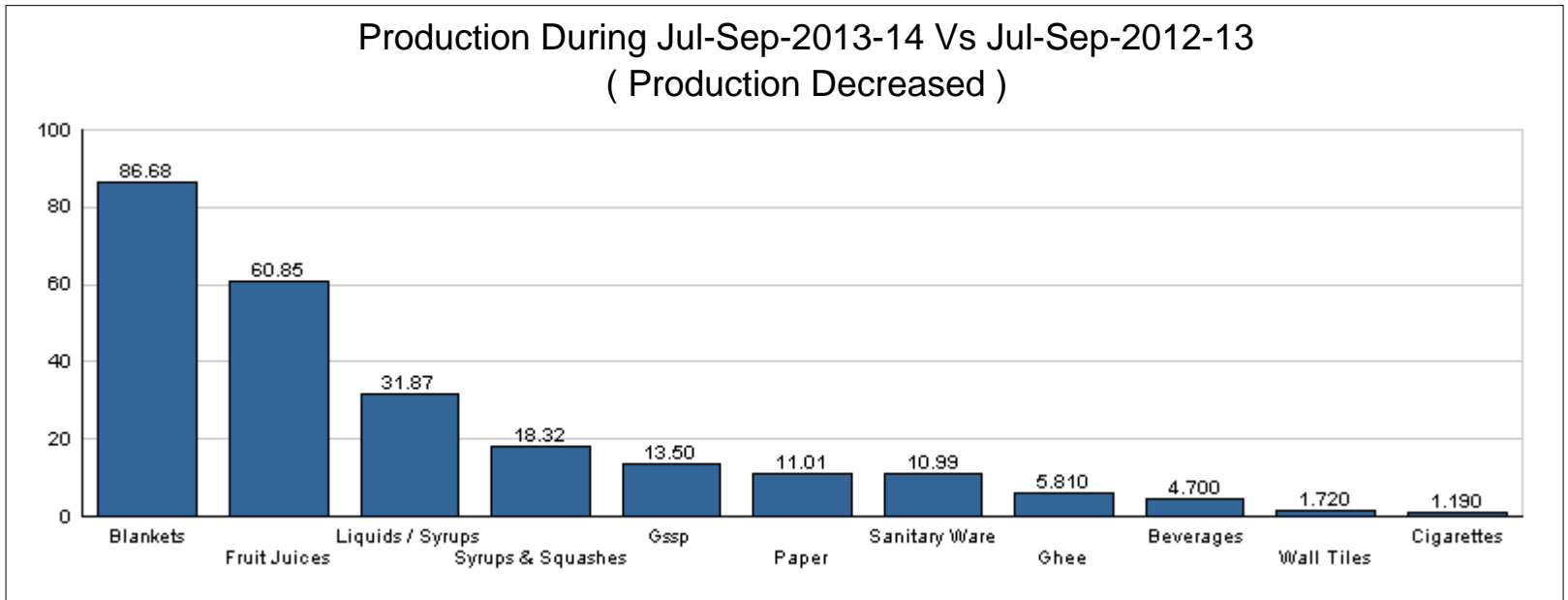


The production was higher in case of Tablets (151.05% ), Electric Bulb (76.31% ), Ointments (51.24% ), Cotton Cloth (49.73% ), Matches (24.21% ), Cooking Oil (23.7% ), Board (21.53% ), Wall Tiles (18.36% ), Beverages (13.16% ), Fabrics (10.2% ), Cement (4.38% ), Sanitary Ware (2.81% ), Cotton Yarn (2.65% )

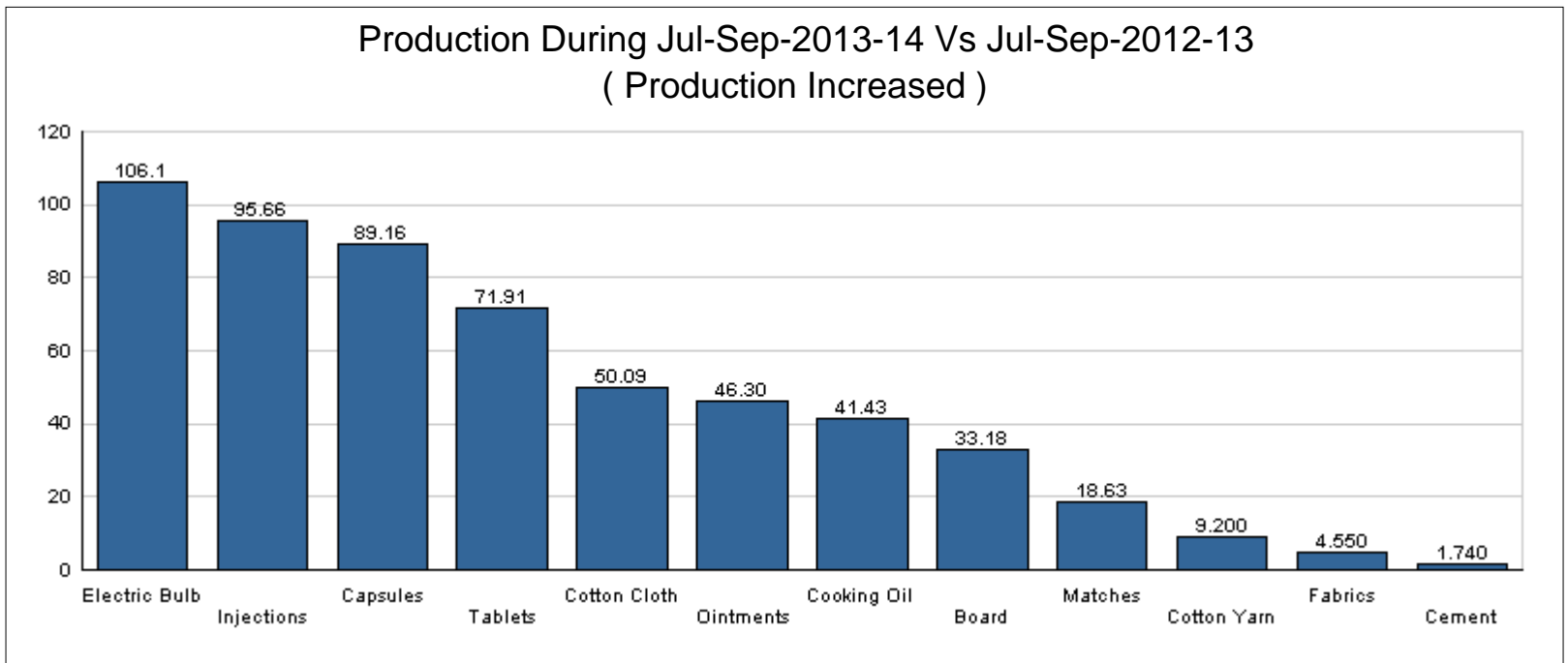


## PRODUCTION DURING Jul-Sep-2013-14 & Jul-Sep-2012-13

The production was lower in case of Blankets (86.68% ), Fruit Juices (60.85% ), Liquids / Syrups (31.87% ), Syrups & Squashes (18.32% ), Gssp (13.5% ), Paper (11.01% ), Sanitary Ware (10.99% ), Ghee (5.81% ), Beverages (4.7% ), Wall Tiles (1.72% ), Cigarettes (1.19% )



The Production was higher in case of Electric Bulb (106.14% ), Injections (95.66% ), Capsules (89.16% ), Tablets (71.91% ), Cotton Cloth (50.09% ), Ointments (46.3% ), Cooking Oil (41.43% ), Board (33.18% ), Matches (18.63% ), Cotton Yarn (9.2% ), Fabrics (4.55% ), Cement (1.74% )



## EMPLOYMENT DURING SEPTEMBER-2013 Vs SEPTEMBER-2013

Total Employment during September 2013 was 1.09% Higher than September-2013



## Analytical Report

Important Items showing Higher/Lower Production during **Sep-2013** as compared to **Aug-2013** are as under:

S. No.	Industry / Item	Percentage Increase	Percentage Decrease	State
<b>1.</b>	<b>Beverages</b>			
I	Beverages		9.87	▼
II	Fruit Juices	5.73		▲
III	Syrups & Squashes		0.57	▼
<b>2.</b>	<b>Cement</b>			
I	Cement	29.80		▲
<b>3.</b>	<b>Ceramics</b>			
I	Sanitary Ware	82.37		▲
II	Wall Tiles	18.88		▲
<b>4.</b>	<b>Cigarettes</b>			
I	Cigarettes	0.26		▲
<b>5.</b>	<b>Corn Industry</b>			
<b>6.</b>	<b>Cotton Textile</b>			
III	Cotton Yarn		3.08	▼
<b>7.</b>	<b>Electric Bulb</b>			
I	Electric Bulb	8.97		▲
<b>8.</b>	<b>Fertilizer</b>			
I	Gssp		35.54	▼
<b>9.</b>	<b>Jute Textile</b>			
<b>10.</b>	<b>Matches</b>			
I	Matches	13.72		▲
<b>11.</b>	<b>Paints And Varnish</b>			
<b>12.</b>	<b>Paper &amp; Paper Board</b>			
I	Board	7.57		▲
II	Paper		3.67	▼
<b>13.</b>	<b>Pharmaceutical</b>			
I	Capsules	32.74		▲
III	Injections		20.22	▼
IV	Liquids / Syrups	4.39		▲
V	Ointments	47.21		▲
VI	Tablets	47.21		▲
<b>14.</b>	<b>Sugar</b>			

## Analytical Report

Important Items showing Higher/Lower Production during **Sep-2013** as compared to **Aug-2013** are as under:

S. No.	Industry / Item	Percentage Increase	Percentage Decrease	State
<b>15.</b>	<b>Vegetable Ghee</b>			
I	Cooking Oil	8.43		▲
II	Ghee	0.43		▲
<b>16.</b>	<b>Woolen</b>			
I	Blankets	548.55		▲
II	Fabrics	57.28		▲

### **EMPLOYMENT DURING SEPTEMBER-2013 Vs SEPTEMBER-2013**

Total Employment during September-2013 was 1.09% Higher than September-2013

## EMPLOYMENT DURING THE MONTH OF SEPTEMBER, 2013

Important Items showing Higher/Lower Production during Sep-2013 as compared to Aug-2013 are as under:

S. No.	Item	Percentage Increase	Percentage Decrease	State
1.	Beverages	0.00	3.60	▼
2.	Cement	4.13	0.00	▲
3.	Ceramics	2.42	0.00	▲
4.	Cigarettes	0.12	0.00	▲
5.	Corn Industry	0.00	0.00	—
6.	Cotton Textile	8.79	0.00	▲
7.	Electric Bulb	0.00	1.20	▼
8.	Fertilizer	0.00	0.83	▼
9.	Jute Textile	0.00	0.00	—
10.	Matches	0.00	2.79	▼
11.	Paints And Varnish	0.00	0.00	—
12.	Paper & Paper Board	0.00	1.63	▼
13.	Pharmaceutical	2.19	0.00	▲
14.	Sugar	0.00	100.00	
15.	Vegetable Ghee	0.00	9.97	▼
16.	Woolen	0.00	0.00	—

**REPORTED UNITS FOR THE MONTHS OF SEP 2013 ,AUG 2013 AND SEP 2012**

Table No. 1

<b>S.No.</b>	<b>Industry Name</b>	<b>September 2013</b>	<b>August 2013</b>	<b>September 2012</b>
1	<b>Beverages</b>	7	7	7
2	<b>Cement</b>	8	8	7
3	<b>Ceramics</b>	2	2	2
4	<b>Cigarettes</b>	7	7	7
5	<b>Cotton Textile</b>	11	11	12
6	<b>Electric Bulb</b>	2	2	2
7	<b>Fertilizer</b>	1	1	1
8	<b>Matches</b>	14	14	14
9	<b>Paper &amp; Paper Board</b>	4	4	3
10	<b>Pharmaceutical</b>	28	26	20
11	<b>Sugar</b>	0	1	4
12	<b>Vegetable Ghee</b>	14	15	14
13	<b>Woolen</b>	1	1	1
	<b>Total</b>	<b>99</b>	<b>99</b>	<b>94</b>

**PRODUCTION OF SELECTED ITEMS OF LARGE SCALE INDUSTRIES IN KHYBER PAKHTUNKHWA  
DURING THE MONTH OF SEPTEMBER-2013 AND AUGUST -2013**

Table No: 2

(Number)

S. No.	Industry / Item	UOM	Production		Relative index Sep -2013 over Aug-2013
			Sep -2013	Aug-2013	
<b>1.</b>	<b>Beverages</b>				
I	Beverages	Ltr	18597605	20633212	90.13
II	Fruit Juices	Ltr	6178351	5843539	105.73
III	Syrups & Squashes	Ltr	300867	302589	99.43
<b>2.</b>	<b>Cement</b>				
I	Cement	M.Ton	829944	639400	129.80
<b>3.</b>	<b>Ceramics</b>				
I	Sanitary Ware	Pcs	7818	4287	182.37
II	Wall Tiles	Sq.M	187720	157913	118.88
<b>4.</b>	<b>Cigarettes</b>				
I	Cigarettes	M.Nos	1524	1520	100.26
<b>5.</b>	<b>Corn Industry</b>				
<b>6.</b>	<b>Cotton Textile</b>				
II	Cotton Cloth	000 Mtrs	1364	1364	100.00
III	Cotton Yarn	M.Ton	9443	9743	96.92
<b>7.</b>	<b>Electric Bulb</b>				
I	Electric Bulb	000 Nos	4420	4056	108.97
<b>8.</b>	<b>Fertilizer</b>				
I	Gssp	M.Ton	4505	6989	64.46
<b>9.</b>	<b>Jute Textile</b>				
<b>10.</b>	<b>Matches</b>				
I	Matches	M.Box	431	379	113.72
<b>11.</b>	<b>Paints And Varnish</b>				
<b>12.</b>	<b>Paper &amp; Paper Board</b>				
I	Board	M.Ton	412	383	107.57
II	Paper	M.Ton	578	600	96.33
<b>13.</b>	<b>Pharmaceutical</b>				
I	Capsules	000 Nos	15260	11496	132.74
III	Injections	000 Nos	592	742	79.78

**PRODUCTION OF SELECTED ITEMS OF LARGE SCALE INDUSTRIES IN KHYBER PAKHTUNKHWA  
DURING THE MONTH OF SEPTEMBER-2013 AND AUGUST -2013**

Table No: 2

(Number)

S. No.	Industry / Item	UOM	Production		Relative index Sep -2013 over Aug-2013
			Sep -2013	Aug-2013	
IV	Liquids / Syrups	000 Ltrs	3446	3301	104.39
V	Ointments	Kg	4802	3262	147.21
VI	Tablets	000 Nos	41933	28485	147.21
<b>14.</b>	<b>Sugar</b>				
<b>15.</b>	<b>Vegetable Ghee</b>				
I	Cooking Oil	M.Ton	4128	3807	108.43
II	Ghee	M.Ton	19038	18957	100.43
<b>16.</b>	<b>Woolen</b>				
I	Blankets	No	2231	344	648.55
II	Fabrics	000 Mtrs	162	103	157.28

**PRODUCTION OF SELECTED ITEMS OF LARGE SCALE INDUSTRIES IN KHYBER PAKHTUNKHWA  
DURING THE MONTH OF SEPTEMBER-2013 AND SEPTEMBER-2012**

Table No: 3

(Number)

S. No.	Industry / Item	UOM	Production		Relative Index Sep -2013 over Sep-2012
			Sep -2013	Sep-2012	
<b>1.</b>	<b>Beverages</b>				
I	Beverages	Ltr	18,597,605	16,434,784	113.16
II	Fruit Juices	Ltr	6,178,351	11,832,804	52.21
III	Syrups & Squashes	Ltr	300,867	1,941,600	15.50
<b>2.</b>	<b>Cement</b>				
I	Cement	M.Ton	829,944	795,151	104.38
<b>3.</b>	<b>Ceramics</b>				
I	Sanitary Ware	Pcs	7,818	7,604	102.81
II	Wall Tiles	Sq.M	187,720	158,600	118.36
<b>4.</b>	<b>Cigarettes</b>				
I	Cigarettes	M.Nos	1,524	1,736	87.79
<b>5.</b>	<b>Corn Industry</b>				
<b>6.</b>	<b>Cotton Textile</b>				
II	Cotton Cloth	000 Mtrs	1,364	911	149.73
III	Cotton Yarn	M.Ton	9,443	9,199	102.65
<b>7.</b>	<b>Electric Bulb</b>				
I	Electric Bulb	000 Nos	4,420	2,507	176.31
<b>8.</b>	<b>Fertilizer</b>				
I	Gssp	M.Ton	4,505	5,855	76.94
<b>9.</b>	<b>Jute Textile</b>				
<b>10.</b>	<b>Matches</b>				
I	Matches	M.Box	431	347	124.21
<b>11.</b>	<b>Paints And Varnish</b>				
<b>12.</b>	<b>Paper &amp; Paper Board</b>				
I	Board	M.Ton	412	339	121.53
II	Paper	M.Ton	578	602	96.01
<b>13.</b>	<b>Pharmaceutical</b>				
I	Capsules	000 Nos	15,260	3,658	417.17
III	Injections	000 Nos	592	56	1057.14
IV	Liquids / Syrups	000 Ltrs	3,446	7,248	47.54

**PRODUCTION OF SELECTED ITEMS OF LARGE SCALE INDUSTRIES IN KHYBER PAKHTUNKHWA  
DURING THE MONTH OF SEPTEMBER-2013 AND SEPTEMBER-2012**

Table No: 3

(Number)

S. No.	Industry / Item	UOM	Production		Relative Index Sep -2013 over Sep-2012
			Sep -2013	Sep-2012	
V	Ointments	Kg	4,802	3,175	151.24
VI	Tablets	000 Nos	41,933	16,703	251.05
<b>14.</b>	<b>Sugar</b>				
<b>15.</b>	<b>Vegetable Ghee</b>				
I	Cooking Oil	M.Ton	4,128	3,337	123.70
II	Ghee	M.Ton	19,038	19,654	96.87
<b>16.</b>	<b>Woolen</b>				
I	Blankets	No	2,231	7,023	31.77
II	Fabrics	000 Mtrs	162	147	110.20



**PRODUCTION OF SELECTED ITEMS OF LARGE SCALE INDUSTRIES IN KHYBER PAKHTUNKHWA  
DURING THE MONTH OF Jul-Sep:2013-2014 AND Jul-Sep:2012-2013**

Table No: 4

S. No.	Industry / Item	UOM	Production		Relative Index Jul-Sep - 2013-2014 Over Jul-Sep - 2012-2013
			Jul-Sep 2013-2014	Jul-Sep 2012-2013	
<b>1.</b>	<b>BEVERAGES</b>				
I	BEVERAGES	Ltr	49067505	51489758	95
II	FRUIT JUICES	Ltr	13898550	35498412	39
III	SYRUPS & SQUASHES	Ltr	8011295	9808022	82
<b>2.</b>	<b>CEMENT</b>				
I	CEMENT	M.Ton	2276272	2237295	102
<b>3.</b>	<b>CERAMICS</b>				
I	SANITARY WARE	Pcs	20305	22812	89
II	WALL TILES	Sq.M	467600	475800	98
<b>4.</b>	<b>CIGARETTES</b>				
I	CIGARETTES	M.Nos	4305	4357	99
<b>5.</b>	<b>CORN INDUSTRY</b>				
<b>6.</b>	<b>COTTON TEXTILE</b>				
II	COTTON CLOTH	000 Mtrs	4105	2735	150
III	COTTON YARN	M.Ton	28915	26479	109
<b>7.</b>	<b>ELECTRIC BULB</b>				
I	ELECTRIC BULB	000 Nos	12422	6026	206
<b>8.</b>	<b>FERTILIZER</b>				
I	GSSP	M.Ton	15194	17565	87
<b>9.</b>	<b>JUTE TEXTILE</b>				
<b>10.</b>	<b>MATCHES</b>				
I	MATCHES	M.Box	1229	1036	119
<b>11.</b>	<b>PAINTS AND VARNISH</b>				
<b>12.</b>	<b>PAPER &amp; PAPER BOARD</b>				
I	BOARD	M.Ton	1413	1061	133
II	PAPER	M.Ton	1779	1999	89
<b>13.</b>	<b>PHARMACEUTICAL</b>				
I	CAPSULES	000 Nos	36995	19558	189
III	INJECTIONS	000 Nos	1984	1014	196
IV	LIQUIDS / SYRUPS	000 Ltrs	11441	16794	68
V	OINTMENTS	Kg	12187	8330	146

**PRODUCTION OF SELECTED ITEMS OF LARGE SCALE INDUSTRIES IN KHYBER PAKHTUNKHWA  
DURING THE MONTH OF Jul-Sep:2013-2014 AND Jul-Sep:2012-2013**

Table No: 4

S. No.	Industry / Item	UOM	Production		Relative Index Jul-Sep - 2013-2014 Over Jul-Sep - 2012-2013
			Jul-Sep 2013-2014	Jul-Sep 2012-2013	
VI	TABLETS	000 Nos	88270	51346	172
<b>14.</b>	<b>SUGAR</b>				
<b>15.</b>	<b>VEGETABLE GHEE</b>				
I	COOKING OIL	M.Ton	14017	9911	141
II	GHEE	M.Ton	61002	64765	94
<b>16.</b>	<b>WOOLEN</b>				
I	BLANKETS	No	2919	21909	13
II	FABRICS	000 Mtrs	368	352	105

**TOTAL NO. OF PRODUCTION WORKERS OF SELECTED ITEMS OF LARGE SCALE INDUSTRIES IN KHYBER PAKHTUNKHWA DURING THE MONTH OF Sep-2013 , Aug-2013 AND Sep-2012**

Table No: 5

S. No.	Industry	Employment (Non-Production)			Relative Index	
		Sep-2013	Aug-2013	Sep-2012	Sep-2013 over Aug-2013	Sep-2013 over Sep-2012
1	Beverages	1126	1168	1210	96.40	93.06
2	Cement	3354	3221	3216	104.13	104.29
3	Ceramics	212	207	211	102.42	100.47
4	Cigarettes	870	869	825	100.12	105.45
5	Cotton Textile	8822	8109	8782	108.79	100.46
6	Electric Bulb	247	250	285	98.80	86.67
7	Fertilizer	240	242	232	99.17	103.45
8	Matches	1535	1579	1565	97.21	98.08
9	Paper & Paper Board	242	246	164	98.37	147.56
10	Pharmaceutical	1261	1234	1057	102.19	119.30
11	Sugar	0	472	473	0.00	0.00
12	Vegetable Ghee	930	1033	1117	90.03	83.26
13	Woolen	628	628	561	100.00	111.94

**TOTAL NO. OF PRODUCTION WORKERS OF SELECTED ITEMS OF LARGE SCALE INDUSTRIES IN KHYBER PAKHTUNKHWA DURING THE MONTH OF Sep-2013 , Aug-2013 AND Sep-2012**

Table No: 6

S. No.	Industry	Production Workers			Relative Index	
		Sep-2013	Aug-2013	Sep-2012	Sep-2013 over Aug-2013	Sep-2013 over Sep-2012
1	Beverages	478	524	440	91.22	108.64
2	Cement	2,462	2,345	1,730	104.99	142.31
3	Ceramics	160	155	154	103.23	103.90
4	Cigarettes	462	681	659	67.84	70.11
5	Cotton Textile	6,987	6,633	7,470	105.34	93.53
6	Electric Bulb	229	232	238	98.71	96.22
7	Fertilizer	184	184	191	100.00	96.34
8	Matches	1,276	1,341	1,498	95.15	85.18
9	Paper & Paper Board	182	185	171	98.38	106.43
10	Pharmaceutical	887	923	430	96.10	206.28
11	Sugar	0	309	748	0.00	0.00
12	Vegetable Ghee	665	821	739	81.00	89.99
13	Woolen	512	512	388	100.00	131.96

# PRODUCTION AND EMPLOYMENT IN BEVERAGES INDUSTRY IN KHYBER PAKHTUNKHWA

Annexure-I

Year/Month	No. of Reporting Unit	Production			Value of Production			Employment			Salaries/Wages Paid (Rs.)		
		Beverages (Liter)	Fruit Juices	Syrups & Squashes	Beverages	Fruit Juices	Syrups & Squashes	Total	Production	Non-Production	Total	Production	Non-Production
2000-01	2	4412671	0	0	616253	0	0	338	86	252	688	159	529
2001-02	2	4968896	0	0	872846	0	0	319	80	239	1730	399	1331
2002-03	2	4379549	0	0	758233	0	0	295	86	209	1592	443	1149
2003-04	2	4944266	0	0	954858	0	0	267	91	176	668	184	484
2004-05	2	4351032	0	0	2285315	0	0	218	66	152	338	102	236
2005-06	1	5346986	0	0	1256464	0	0	249	60	189	0	0	0
2006-07	2	7842285	0	0	1107999	0	0	295	84	211	25	18	7
2007-08	3	8889115	0	0	1624340	0	0	265	66	199	19	13	6
2008-09	2	10539438	2019633	0	1814374	505771	0	292	78	214	0	0	0
2009-10	2	83314494	10373838	0	2803255	103545	0	290	55	235	0	0	0
2010-11	12	97681697	24309103	13525408	6038288	5646027	2044639	660	254	406	4655	2082	2573
2011-12	7	131312219	76208221	21402446	8702110	540002085	1628910085	944	382	562	5369	3094	2275
2012-13	8	124256789	64686247	34348999	22826679	347758034	785584229	1152	473	679	5640	2869	2771
<u>Jul-Sep</u>	3	51489758	35498412	9808022	3124051	301792743	776651583	1309	485	824	5400	2680	2720
Jul-2012	1	16755948	11832804	4615958	1428821	100597581	775830632	1225	565	660	6517	3690	2827
Aug-2012	1	18299026	11832804	3250464	1082786	100597581	548957	1189	451	738	4771	2312	2459
Sep-2012	7	16434784	11832804	1941600	612444	100597581	271994	1515	440	1075	4912	2037	2875
Oct-2012	6	10458232	2642827	0	5599029	26554166	0	882	276	606	3577	1314	2263
Nov-2012	5	6334267	1556292	18950	3265917	2186689	3263022	853	257	596	3517	1206	2311
Dec-2012	5	952330	4645464	1037557	1061190	2150191	177229	849	264	585	3750	1414	2336
Jan-2013	7	3501969	3318330	1605396	583775	2268387	273505	1045	395	650	5384	2409	2975
Feb-2013	7	19553223	4203268	1746838	169309	2696295	1761083	1044	400	644	5413	2465	2948
Mar-2013	7	3501852	4690358	3458140	765548	2646840	608196	1183	517	666	6487	3446	3041
Apr-2013	7	10830531	4338670	3030483	2708290	2470468	505884	1210	576	634	6428	3473	2955
May-2013	7	7787901	2094487	5626671	734041	2491817	942921	1321	683	638	7741	4678	3063
Jun-2013	7	9846726	1698139	8016942	4815529	2500438	1400806	1503	849	654	9183	5985	3198
<u>2013-14 Jul-Sep</u>	7	49067505	13898550	8011295	26482124	9343730	1386697	1229	583	646	6989	3734	3255
Jul-2013	7	9836688	1876660	7407839	797473	2462240	1281834	1393	746	647	10000	6496	3504
Aug-2013	7	20633212	5843539	302589	13122873	3440866	52874	1168	524	644	5613	2448	3165
Sep-2013	7	18597605	6178351	300867	12561778	3440624	51989	1126	478	648	5355	2258	3097

# PRODUCTION AND EMPLOYMENT IN CEMENT INDUSTRY IN KHYBER PAKHTUNKHWA

Annexure-I I

Year/Month	No. of Reporting Unit	Production in M.T.	Value (Rs. in 000)	Employment			Salaries/Wages Paid (Rs.)		
				Total	Production	Non-Production	Total	Production	Non-Production
2000-01	3	1924161	3135250	1342	677	665	3989	1946	2043
2001-02	4	1976109	1096344	1467	860	607	6654	3456	3198
2002-03	4	3228029	3233573	1467	951	516	6111	3605	2506
2003-04	5	4181258	5257389	1347	908	439	3782	2348	1434
2004-05	4	4632995	6920750	956	739	217	1501	1360	141
2005-06	4	5136146	16143498	1083	833	250	5899	4622	1277
2006-07	5	6838947	28718882	1681	1243	438	12001	9331	2670
2007-08	6	7339248	34479686	1677	1261	416	11969	9856	2113
2008-09	6	6874597	17429543	2086	1624	462	13852	11106	2746
2009-10	7	8573131	31671116	2465	1835	630	25405	19474	5931
2010-11	8	8572389	49169544	2516	1875	641	31262	23026	8236
2011-12	8	8813090	73386819	2644	1933	711	39853	29015	10838
2012-13	8	9328749	64607345	2793	2037	756	45792	32340	13452
<u>Jul-Sep</u>	7	2237295	14893005	2440	1819	621	39816	28766	11050
Jul-2012	7	751799	4913187	2285	1732	553	34242	25135	9107
Aug-2012	7	690345	4871184	2755	1996	759	48009	34148	13861
Sep-2012	7	795151	5108634	2281	1730	551	37198	27016	10182
Oct-2012	7	657615	8715462	2725	1979	746	44390	30405	13985
Nov-2012	7	792295	5207079	2798	1988	810	48016	33872	14144
Dec-2012	7	805676	5357445	2735	1971	764	47771	33722	14049
Jan-2013	7	731731	5028835	2741	1967	774	47832	33577	14255
Feb-2013	7	719693	5145925	2761	1995	766	47464	33663	13801
Mar-2013	7	790095	5456045	2804	2031	773	47626	33544	14082
Apr-2013	8	885063	6279763	3216	2347	869	50725	36401	14324
May-2013	8	859685	2530455	3211	2354	857	48077	34330	13747
Jun-2013	8	849601	5993331	3211	2356	855	48143	32262	15881
<u>2013-14 Jul-Sep</u>	8	2276272	17253432	3259	2390	869	49580	35083	14497
Jul-2013	8	806928	5912948	3202	2364	838	47369	33582	13787
Aug-2013	8	639400	5317349	3221	2345	876	49814	35354	14460
Sep-2013	8	829944	6023135	3354	2462	892	51556	36313	15243

# PRODUCTION AND EMPLOYMENT IN CERAMICS INDUSTRY IN KHYBER PAKHTUNKHWA

Annexure-III

Year/Month	No. of Reporting Unit	Production		Value (Rs. in 000)		Employment			Salaries/Wages Paid (Rs. in 000)		
		Sanitary Ware	Wall Tiles (in Sq.Mtr)	Sanitary Ware	Wall Tiles	Total	Production	Non-Production	Total	Production	Non-Production
2000-01	1	0	423342	0	54841	106	81	25	276	214	62
2001-02	1	0	643829	0	81838	113	91	22	274	218	56
2002-03	1	0	1146803	0	151652	99	77	22	279	220	59
2003-04	1	13750	1407693	3588	132709	6182	6155	27	268	202	66
2004-05	2	29545	1443957	7667	140170	120	84	36	390	266	124
2005-06	2	26079	1511371	6253	155750	131	90	41	442	320	122
2006-07	2	29461	1812548	6291	221798	153	118	35	541	431	110
2007-08	2	32016	2473633	9601	311712	200	132	68	695	538	157
2008-09	2	35639	2447234	15747	335935	191	143	48	1461	1263	198
2009-10	2	36262	2183589	14985	350856	201	150	51	1081	869	212
2010-11	2	48596	2059156	24194	404637	204	149	55	1250	952	298
2011-12	2	59180	2417179	29585	498802	203	150	53	1273	965	308
2012-13	2	90441	2155370	45218	915219	210	158	52	1773	1251	522
<u>Jul-Sep</u>	2	22812	475800	11406	105378	209	154	55	1649	1275	374
Jul-2012	2	7604	158600	3802	35126	209	154	55	1649	1275	374
Aug-2012	2	7604	158600	3802	35126	209	154	55	1649	1275	374
Sep-2012	2	7604	158600	3802	35126	209	154	55	1649	1275	374
Oct-2012	2	5546	177057	2773	37797	210	154	56	1483	1145	338
Nov-2012	2	7407	179371	3703	38400	217	161	56	1564	1222	342
Dec-2012	2	8531	168156	4265	47039	207	155	52	1544	1228	316
Jan-2013	2	8879	169950	4440	41212	211	160	51	1536	1226	310
Feb-2013	2	7808	181057	3904	43905	210	159	51	1524	1219	305
Mar-2013	2	8165	210106	4082	47899	208	157	51	1483	1193	290
Apr-2013	2	5723	200711	2861	464803	211	163	48	1613	1342	271
May-2013	2	8145	205773	4072	46384	209	161	48	3963	1275	2688
Jun-2013	2	7425	187389	3712	42402	208	159	49	1612	1336	276
<u>2013-14 Jul-Sep</u>	1	20305	467600	10152	114202	208	156	52	2067	1646	421
Jul-2013	1	8200	121967	4100	27007	206	153	53	2018	1588	430
Aug-2013	1	4287	157913	2143	42076	207	155	52	2050	1631	419
Sep-2013	1	7818	187720	3909	45119	212	160	52	2134	1719	415

# PRODUCTION AND EMPLOYMENT IN CIGARETTES INDUSTRY IN KHYBER PAKHTUNKHWA

Annexure-IV

Year/Month	No. of Reporting Unit	Production in M.Nos.	Value (Rs. in 000)	Employment			Salaries/Wages Paid (Rs. in 000)		
				Total	Production	Non-Production	Total	Production	Non-Production
2000-01	8	17519	7693964	2138	1614	524	99	66	33
2001-02	6	17366	6766934	1642	1151	491	91	57	34
2002-03	5	13864	6203373	1579	1186	393	3528	2995	533
2003-04	6	14063	6703370	1489	1220	269	11544	9985	1559
2004-05	7	15918	8236263	1412	1134	278	11188	9819	1369
2005-06	4	17364	8692215	871	702	169	10941	9652	1289
2006-07	5	20777	13189374	879	708	171	12809	11437	1372
2007-08	5	20606	14876450	840	682	158	13612	12153	1459
2008-09	5	24217	19162180	925	767	158	14335	12918	1417
2009-10	7	19941	19229686	945	778	167	20332	18382	1950
2010-11	8	19673	21544188	941	775	166	26817	23055	3762
2011-12	8	27248	58730251	1074	898	176	28606	25935	2671
2012-13	9	22976	35110502	841	654	187	23531	21284	2247
<u>Jul-Sep</u>	7	4357	7678466	825	668	157	21414	19539	1875
Jul-2012	7	1081	3227101	851	686	165	16916	15411	1505
Aug-2012	8	1540	2084788	812	659	153	23594	21562	2032
Sep-2012	7	1736	2366577	811	659	152	23732	21644	2088
Oct-2012	7	1789	2587774	811	659	152	23550	21524	2026
Nov-2012	7	1853	2521655	868	705	163	24423	22319	2104
Dec-2012	7	2027	2762404	867	704	163	25043	23063	1980
Jan-2013	7	2175	2995213	869	708	161	26394	23760	2634
Feb-2013	7	2173	5066196	867	706	161	26394	23760	2634
Mar-2013	7	2359	3269313	833	675	158	22904	20962	1942
Apr-2013	7	2370	3138148	825	671	154	22990	21045	1945
May-2013	7	2475	3272657	841	509	332	23192	20201	2991
Jun-2013	7	1398	1818676	836	501	335	23232	20152	3080
<u>2013-14 Jul-Sep</u>	7	4305	16095994	952	582	370	24142	21037	3105
Jul-2013	7	1261	1916674	1117	533	584	24073	20618	3455
Aug-2013	7	1520	11751788	869	681	188	23282	21000	2282
Sep-2013	7	1524	2427532	870	533	337	25072	21494	3578



# PRODUCTION AND EMPLOYMENT IN COTTON TEXTILE INDUSTRY IN KHYBER PAKHTUNKHWA

Annexure-VI

Year/ Month	No. of Reporting Unit	Production				Value (Rs. in 000)				Employment			Salaries/Wages Paid (Rs. in 000)		
		Acrylic Fibre (M.T)	Cotton Cloth (000 Mtr)	Cotton Yarn (M.T)	Polyester Fibre (M.T)	Acrylic Fibre	Cotton Cloth	Cotton Yarn	Polyester Fibre	Total	Production	Non- Production	Total	Production	Non- Production
2000-01	9	0	2562	60462	0	0	44730	6727561	0	0	0	0	0	0	
2001-02	7	0	3560	57138	0	0	32861	6553813	0	0	0	0	0	0	
2002-03	8	0	6557	59386	0	0	60438	6959710	0	3747	2792	955	4344	2882	1462
2003-04	9	0	7823	69317	0	0	134418	8327030	0	8950	6630	2320	11796	7760	4036
2004-05	15	0	17674	86620	0	0	300364	10316963	0	10724	8253	2471	22293	15262	7031
2005-06	15	88858	14067	106584	0	7865000	141515	13242872	0	11705	9131	2574	33648	25177	8471
2006-07	12	151898	3510	96697	0	13444492	29305	12003673	27556	13880	11068	2812	51091	39325	11766
2007-08	14	97240	6931	89618	0	9075611	24502	11870298	65	11884	9367	2517	34820	26062	8758
2008-09	11	28118	3290	88696	0	3807000	67632	12181160	2385	10562	7781	2781	25323	21490	3833
2009-10	14	0	2824	96757	0	0	100692	19029564	51	9662	7626	2036	20444	16039	4405
2010-11	12	0	1974	89377	0	0	190300	28316120	0	8200	6436	1764	18637	14220	4417
2011-12	14	0	11351	86109	0	0	168135	25091312	0	8324	6785	1539	17702	16018	1684
2012-13	19	0	13372	110848	0	0	134772	30404249	0	10144	8461	1683	17397	15516	1881
<u>Jul-Sep</u>	12	0	2735	26479	0	0		6629593	0	11221	9489	1732	15316	13901	1415
Jul-2012	12	0	912	8559	0	0	0	2134768	0	16078	14101	1977	8686	7526	1160
Aug-2012	13	0	912	8721	0	0	0	2192136	0	8419	6897	1522	17960	16779	1181
Sep-2012	12	0	911	9199	0	0	0	2302689	0	9168	7470	1698	19300	17397	1903
Oct-2012	13	0	1022	9330	0	0	13462	2483973	0	8457	6866	1591	16980	15331	1649
Nov-2012	13	0	1060	9166	0	0	14755	2304407	0	18655	16455	2200	8714	7533	1181
Dec-2012	13	0	1075	9775	0	0	14098	2572138	0	9017	7365	1652	21661	19469	2192
Jan-2013	13	0	1081	9518	0	0	15259	3552547	0	9049	7378	1671	21693	19491	2202
Feb-2013	13	0	1460	8831	0	0	17374	2325204	0	9062	7387	1675	21739	19558	2181
Mar-2013	12	0	775	9765	0	0	11752	2697781	0	8873	7234	1639	19980	17990	1990
Apr-2013	12	0	1443	9704	0	0	17847	2688702	0	8782	7148	1634	21829	18074	3755
May-2013	11	0	1336	9268	0	0	10865	2647389	0	8088	6623	1465	9389	8171	1218
Jun-2013	11	0	1385	9012	0	0	19360	2502515	0	8086	6610	1476	20841	18877	1964
<u>2013-14 Jul-Sep</u>	11	0	4105	28915	0	0	644787	7399367	0	8345	6873	1473	18137	16361	1776
Jul-2013	11	0	1377	9729	0	0	15231	2703368	0	8105	6644	1461	21141	19167	1974
Aug-2013	11	0	1364	9743	0	0	8468	2676013	0	8109	6633	1476	23160	21044	2116
Sep-2013	11	0	1364	9443	0	0	621088	2019986	0	8822	7341	1481	10109	8872	1237

# PRODUCTION AND EMPLOYMENT IN ELECTRIC BULB INDUSTRY IN KHYBER PAKHTUNKHWA

Annexure-VII

Year/Month	No. of Reporting Unit	Production		Value (Rs. in 000)		Employment			Salaries/Wages Paid (Rs. in 000)		
		Electric Bulb (000 Nos)	Electric Tubes (000 Mtr)	Electric Bulb	Electric Tubes	Total	Production	Non-Production	Total	Production	Non-Production
2000-01	2	44819	0	0	0	277	248	29	0	0	0
2001-02	2	43058	0	0	0	291	265	26	0	0	0
2002-03	2	51382	0	0	0	328	297	31	0	0	0
2003-04	2	54674	4227	116391	116391	572	522	50	0	0	0
2004-05	4	66700	6123	164112	164112	349	324	25	227	198	29
2005-06	3	63010	5120	116354	116354	539	503	36	318	278	40
2006-07	3	57326	5345	197844	197844	253	232	21	382	317	65
2007-08	3	50540	4286	158286	158286	435	381	54	772	612	160
2008-09	3	48742	2534	252	252	293	252	41	707	527	180
2009-10	3	48825	2914	117692	117692	95	84	11	188	137	51
2010-11	4	43484	1180	68439	68439	252	236	16	0	0	0
2011-12	4	40296	1266	76219	76219	272	255	17	0	0	0
2012-13	3	44204	1093	131278	131278	260	242	18	0	0	0
<u>Jul-Sep</u>	2	6026	214	73213	12677	249	233	16	0	0	0
Jul-2012	2	1690	35	20728	2286	242	228	14	0	0	0
Aug-2012	2	1829	89	22652	5824	247	232	15	0	0	0
Sep-2012	2	2507	90	29833	4567	256	238	18	0	0	0
Oct-2012	2	3664	103	44983	6728	255	238	17	0	0	0
Nov-2012	2	4005	177	46288	6903	254	236	18	0	0	0
Dec-2012	2	4457	103	54570	6703	247	228	19	0	0	0
Jan-2013	2	4961	109	57878	7098	247	230	17	0	0	0
Feb-2013	2	4084	84	50117	5471	270	252	18	0	0	0
Mar-2013	2	4248	64	50985	4212	281	261	20	0	0	0
Apr-2013	2	4543	117	55600	75952	285	266	19	0	0	0
May-2013	2	3805	122	44479	5534	266	249	17	0	0	0
Jun-2013	2	4411	0	52939	0	268	249	19	0	0	0
<u>2013-14</u> <u>Jul-Sep</u>	2	12422		153349		253	235	18	0	0	0
Jul-2013	2	3946	0	48103	0	262	243	19	0	0	0
Aug-2013	2	4056	0	49799	0	250	232	18	0	0	0
Sep-2013	2	4420	0	55447	0	247	229	18	0	0	0

# PRODUCTION AND EMPLOYMENT IN FERTILIZER INDUSTRY IN KHYBER PAKHTUNKHWA

Annexure-VIII

Year/Month	No. of Reporting Unit	Production in M.T.	Value (Rs. in 000)	Employment			Salaries/Wages Paid (Rs.)		
				Total	Production	Non-Production	Total	Production	Non-Production
2000-01	1	113340	539664	250	161	89	0	0	0
2001-02	1	113340	539664	250	161	89	0	0	0
2002-03	1	80007	411483	144	48	96	0	0	0
2003-04	1	92905	528136	180	44	136	0	0	0
2004-05	1	87340	539234	233	51	182	0	0	0
2005-06	1	85455	1072436	256	53	203	0	0	0
2006-07	1	81930	590517	252	47	205	0	0	0
2007-08	1	92380	590625	239	40	199	0	0	0
2008-09	1	91821	1346428	203	100	103	2635	1776	859
2009-10	1	101225	1321419	267	205	62	6387	4688	1699
2010-11	1	94263	1423949	269	210	59	6655	5207	1448
2011-12	1	68191	1519836	265	203	62	6875	5254	1621
2012-13	1	57822	1236272	240	185	55	6804	5251	1553
<u>Jul-Sep</u>	1	17565	407508	248	191	57	6561	5009	1552
Jul-2012	1	5855	135836	248	191	57	6561	5009	1552
Aug-2012	1	5855	135836	248	191	57	6561	5009	1552
Sep-2012	1	5855	135836	248	191	57	6561	5009	1552
Oct-2012	1	10115	209390	240	185	55	6758	5198	1560
Nov-2012	1	11040	228528	240	185	55	7126	5528	1598
Dec-2012	1	2670	55002	243	188	55	6706	5151	1555
Jan-2013	1	2120	43672	242	187	55	6623	5059	1564
Feb-2013	1	4950	101970	239	184	55	6921	5292	1629
Mar-2013	1	3810	74388	235	182	53	6440	5023	1417
Apr-2013	1	370	7622	232	179	53	6382	5002	1380
May-2013	1	370	7622	232	179	53	6382	5002	1380
Jun-2013	1	4812	100570	231	177	54	8625	6729	1896
<u>2013-14 Jul-Sep</u>	1	15194	304596	241	184	57	8088	6366	1722
Jul-2013	1	3700	64790	241	185	56	8028	6322	1706
Aug-2013	1	6989	145652	242	184	58	8104	6365	1739
Sep-2013	1	4505	94154	240	184	56	8133	6411	1722

**PRODUCTION AND EMPLOYMENT IN MATCHES INDUSTRY IN KHYBER PAKHTUNKHWA**

**Annexure-X**

Year/Month	No. of Reporting Unit	Production in M.Nos.	Value (Rs. in 000)	Employment			Salaries/Wages Paid (Rs. in 000)		
				Total	Production	Non-Production	Total	Production	Non-Production
2001-02	5	945	234925	235	211	24	413	350	63
2002-03	3	1123	250099	256	225	31	719	598	121
2003-04	7	2591	696433	548	456	92	479	342	137
2004-05	13	2630	697400	641	536	105	849	628	221
2005-06	10	4036	1403202	1709	1486	223	3793	2942	851
2006-07	15	5168	1721495	1041	850	191	2944	2353	591
2007-08	16	5535	1581460	908	736	172	2728	2152	576
2008-09	14	4601	1504411	1917	1592	325	7994	6254	1740
2009-10	16	4494	1433559	2231	1820	411	7652	5916	1736
2010-11	17	4359	1759573	1944	1669	275	8797	7023	1774
2011-12	15	3984	1488998	2536	2260	276	15171	13195	1976
2012-13	16	4757	2188252	1647	1450	197	15918	13738	2180
<u>Jul-Sep</u>	14	1036	467422	1672	1489	183	37885	36410	1475
Jul-2012	14	350	160142	1659	1475	184	36233	34899	1334
Aug-2012	14	339	151883	1676	1493	183	38741	37195	1546
Sep-2012	14	347	155397	1681	1498	183	38683	37137	1546
Oct-2012	15	377	159886	1730	1588	142	7264	5036	2228
Nov-2012	15	365	171707	1733	1590	143	7285	5060	2225
Dec-2012	14	379	149551	1663	1522	141	7120	4875	2245
Jan-2013	14	455	214997	1591	1386	205	9402	7037	2365
Feb-2013	14	422	196471	1584	1377	207	8947	5537	3410
Mar-2013	14	437	212969	1566	1362	204	9380	7006	2374
Apr-2013	14	444	214628	1565	1362	203	9250	7006	2244
May-2013	14	421	203109	1574	1371	203	9257	7020	2237
Jun-2013	14	421	197512	1734	1371	363	9455	7048	2407
<u>2013-14</u> <u>Jul-Sep</u>	14	1229	575719	1561	1344	217	10809	7732	3077
Jul-2013	14	419	199026	1569	1367	202	9928	7501	2427
Aug-2013	14	379	193901	1579	1341	238	10962	7723	3239
Sep-2013	14	431	182792	1535	1324	211	11537	7971	3566

# PRODUCTION AND EMPLOYMENT IN PAINTS INDUSTRY IN KHYBER PAKHTUNKHWA

**Annexure-XI**

Year/Month	No. of Reporting Unit	Production in Kg	Value (Rs. in 000)	Employment			Salaries/Wages Paid (Rs. in 000)		
				Total	Production	Non-Production	Total	Production	Non-Production
2000-01	1	74976	9024	17	12	5	27	18	9
2001-02	2	35337	4123	14	10	4	30	20	10
2002-03	1	19858	2244	13	10	3	37	25	12
2003-04	1	15705	1995	12	9	3	35	22	13
2004-05	1	19135	1269	14	10	4	48	30	18
2005-06	1	43106	2474	17	10	7	50	33	17
2006-07	1	28068	2525	14	10	4	60	40	20
2007-08	1	24933	2703	12	8	4	86	41	45
2008-09	1	25760	3980	11	7	4	68	43	25
2009-10	1	12675	2741899	10	7	3	69	45	24
2010-11	1	9353	1647	10	7	3	81	51	30
2011-12	1	9907	2033	10	7	3	86	56	30
<u>Jul-Sep</u>							0	0	0
Jul-2012	0	0	0	0	0	0	0	0	0
Aug-2012	0	0	0	0	0	0	0	0	0
Sep-2012	0	0	0	0	0	0	0	0	0
Oct-2012	0	0	0	0	0	0	0	0	0
Nov-2012	0	0	0	0	0	0	0	0	0
Dec-2012	0	0	0	0	0	0	0	0	0
Jan-2013	0	0	0	0	0	0	0	0	0
Feb-2013	0	0	0	0	0	0	0	0	0
Mar-2013	0	0	0	0	0	0	0	0	0
Apr-2013	0	0	0	0	0	0	0	0	0
May-2013	0	0	0	0	0	0	0	0	0
Jun-2013	0	0	0	0	0	0	0	0	0
	0			0			0		

# PRODUCTION AND EMPLOYMENT IN PAPER & PAPER BOARD INDUSTRY IN KHYBER

Annexure-XII

Year/Month	No. of Reporting Unit	Production (M.T)		Value (Rs. in 000)		Employment			Salaries/Wages Paid (Rs. in 000)		
		Board	Paper	Board	Paper	Total	Production	Non-Production	Total	Production	Non-Production
2000-01	1	0	7245	0	275220	180	127	53	0	0	0
2001-02	1	0	6320	0	231082	179	127	52	0	0	0
2002-03	2	7493	9198	96815	420795	236	172	64	0	0	0
2003-04	2	11877	8039	134779	338053	233	166	67	0	0	0
2004-05	3	5320	8254	63786	397793	311	248	63	30	7	23
2005-06	2	4722	6859	63048	224398	208	148	60	0	0	0
2006-07	2	4358	5842	127913	177988	215	154	61	0	0	0
2007-08	2	3796	5659	73416	233681	227	163	64	0	0	0
2008-09	2	4318	5375	88025	256169	246	181	65	159	135	24
2009-10	3	11593	1805	193560	88916	134	95	39	422	272	150
2010-11	4	11373	1674	241112	66787	209	148	61	976	637	339
2011-12	4	4129	7965	130201	199988	230	178	52	1206	933	273
2012-13	4	6359	7154	113379	182042	191	138	53	1130	781	349
<u>Jul-Sep</u>	3	1061	1999	33975	45266	225	172	53	1297	990	307
Jul-2012	3	368	715	11456	18656	226	173	53	1280	974	306
Aug-2012	3	354	682	11325	13073	223	171	52	1261	955	306
Sep-2012	3	339	602	11194	13537	225	171	54	1351	1042	309
Oct-2012	4	588	522	3882	13217	146	103	43	725	538	187
Nov-2012	3	329	578	2044	14992	146	103	43	867	545	322
Dec-2012	4	657	597	6029	15247	166	115	51	1032	627	405
Jan-2013	4	632	597	18591	14770	253	186	67	1564	1142	422
Feb-2013	4	464	543	4998	14291	165	113	52	898	630	268
Mar-2013	4	643	602	6721	16207	163	112	51	1023	613	410
Apr-2013	4	611	581	5924	15759	164	112	52	1013	590	423
May-2013	4	656	581	7641	15759	164	112	52	1013	590	423
Jun-2013	4	718	554	23574	16534	247	183	64	1533	1130	403
<u>2013-14</u> <u>Jul-Sep</u>	4	1413	1779	42210	49254	244	183	61	1615	1214	401
Jul-2013	4	618	601	13198	14749	245	183	62	1492	1112	380
Aug-2013	4	383	600	14047	16762	246	185	61	1675	1255	420
Sep-2013	4	412	578	14965	17743	242	182	60	1679	1276	403

# PRODUCTION AND EMPLOYMENT IN PHARMACEUTICAL INDUSTRY IN KHYBER PAKHTUNKHWA

Annexure-XIII

Year/ Month	No. of Reporing Unit	Production						Value of Production						Employment			Salaries/Wages Paid (Rs. in 000)		
		Capsules	Galanicals Tinctures/ Spirits (000 Ltr)	Injec-tions	Liquids/ Syrups (000 Ltr)	Ointmnts (Kg)	Tablets (000 Nos)	Capsule	Galanicals Tinctures/ Spirits	Injec-tion	Liquids/ Syrups	Ointmnt	Tablet	Total	Production	Non- Production	Total	Production	Non- Production
2005-06	9	7737625	39	1784	1263011	46320	143399153	322220	4578360	95307	93226985	23073270	207119889	587	327	260	1787784	1144371	643413
2006-07	10	7265950	5	1724	348573	24851	152996146	12456400	871856	83188	98071458	27801048	188262714	602	328	274	2178015	1455593	722422
2007-08	10	8671607	0	349012	1474324	23307	44606938	6634356	0	149407	20106875	36069	7613553	726	433	293	3150358	2174071	976287
2008-09	13	8678479	0	228418	1013189	1240	30076596	3518090	0	321895	13579801	46073	6656003	749	446	303	2653941	2026674	627267
2009-10	10	14381973	0	300585	1615027	39822	79504742	19076605	1960	770009	53943188	10700353	160169922	182	104	78	440072	312345	127727
2010-11	72	270278	469	6616	342462	36837	1094030	4531262	0	131968	6029438	60286	9790828	1530	957	573	819078	578740	240338
2011-12	72	226415	12	887137	41382	37576	403061	1178211	0	10201367	428094	28540	2817299	1008	654	354	153495	99537	53958
2012-13	49	432339	0	9567	69685	109014	3713242	1082386	8533	181634	252426	40727	4440691	1130	778	352	13039	7174	5865
<u>Jul-Sep</u>	25	19558		1014	16794	8330	51346	30982	0	5282	32938	4450	55989	795	577	218	7142	4512	2630
Jul-2012	26	9176	0	405	4373	2740	13534	12160	0	1696	11493	250	14827	897	646	251	7977	5147	2830
Aug-2012	28	6724	0	553	5173	2415	21109	13365	0	3005	10069	310	22942	911	654	257	8058	5170	2888
Sep-2012	20	3658	0	56	7248	3175	16703	5457	0	581	11376	3890	18220	577	430	147	5392	3219	2173
Oct-2012	36	6472	0	810	10123	3500	1198867	84744	0	16895	25680	280	639956	1421	914	507	15926	9023	6903
Nov-2012	36	257394	0	625	11434	2550	1033693	81345	8533	10362	29401	399	643883	1446	937	509	15664	8743	6921
Dec-2012	32	4496	0	741	6464	3449	891132	73533	0	6368	28660	380	809323	1137	753	384	12743	7580	5163
Jan-2013	30	15315	0	876	3777	6891	44807	73505	0	18741	29015	8013	128547	1340	900	440	15608	6872	8736
Feb-2013	30	9451	0	1059	3369	7407	46912	43658	0	20996	38932	7922	832757	1333	890	443	16523	6465	10058
Mar-2013	29	18183	0	1088	3778	8132	29382	47013	0	23770	29312	439	75147	1347	905	442	19585	6972	12613
Apr-2013	23	81654	0	930	3784	62154	368620	294500	0	31046	16265	8567	846068	1057	776	281	14102	10014	4088
May-2013	23	12716	0	1221	3668	3525	22137	297838	0	24656	11799	4160	357719	1045	765	280	12814	8820	3994
Jun-2013	23	7100	0	1203	6494	3076	26346	55268	0	23518	10424	6117	51302	1047	767	280	12073	8066	4007
<u>2013-14 Jul-Sep</u>	25	36995		1984	11441	12187	88270	251298	0	155361	33138	18594	277898	1147	857	290	12563	8347	4216
Jul-2013	22	10239	0	650	4694	4123	17852	80081	0	22808	9212	6691	59746	945	702	243	10706	7195	3511
Aug-2013	26	11496	0	742	3301	3262	28485	80124	0	14790	10997	4862	79743	1234	923	311	12981	8559	4422
Sep-2013	27	15260	0	592	3446	4802	41933	91093	0	117763	12929	7041	138409	1261	945	316	14001	9286	4715

**PRODUCTION AND EMPLOYMENT IN SUGAR INDUSTRY IN KHYBER PAKHTUNKHWA**

Annexure-XV

Year/Month	No. of Reporting Unit	Production in	Value (Rs. in 000)	Employment			Salaries/Wages Paid (Rs. in 000)		
				Total	Production	Non-Production	Total	Production	Non-Production
2000-01	4	53072	276000	1495	724	771	3186	2281	905
2001-02	3	129357	12870	1653	917	736	2738	1988	750
2002-03	4	110764	557310	1945	941	1004	3267	2503	764
2003-04	4	199034	1191019	1849	988	861	4885	3839	1046
2004-05	2	104834	856026	2013	947	1066	4870	2778	2092
2005-06	3	94545	250058	1271	801	470	2993	1988	1005
2006-07	3	87243	1100069	1383	720	663	4447	2784	1663
2007-08	4	66772	312176	1242	786	456	7050	5485	1565
2008-09	3	32937	525374	1170	679	491	7172	4867	2305
2009-10	4	9140	362177	561	313	248	3897	2465	1432
2010-11	6	180943	983216	911	614	297	3983	2811	1172
2011-12	6	203410	391623	2370	1551	819	9070	6320	2750
2012-13	3	62820	501984	1001	688	313	13401	9154	4247
<u>Jul-Sep</u>	0	0	0	1301	782	519	11611	7211	4400
Jul-2012	4	0	0	1313	841	472	11418	7625	3793
Aug-2012	4	0	0	1218	756	462	10013	6341	3672
Sep-2012	4	0	0	1370	748	622	13400	7666	5734
Oct-2012	3	0	0	815	544	271	11026	7842	3184
Nov-2012	3	6872	0	995	700	295	13576	9555	4021
Dec-2012	3	16470	125496	1203	913	290	17717	14689	3028
Jan-2013	3	10645	125496	1197	912	285	19702	14840	4862
Feb-2013	3	12069	125496	1189	904	285	18500	13385	5115
Mar-2013	3	16035	125496	1189	903	286	18490	13060	5430
Apr-2013	1			473	308	165	9049	4668	4381
May-2013	1	729	0	524	362	162	8958	5087	3871
Jun-2013	1	0	0	524	362	162	8958	5087	3871
<u>2013-14 Jul-Sep</u>	1	0	0	472	308	165	6829	4283	2546
Jul-2013	1	0	0	472	306	166	6355	3905	2450
Aug-2013	1	0	0	472	309	163	7302	4660	2642
Sep-2013	0	0	0	0	0	0	0	0	0



**PRODUCTION AND EMPLOYMENT IN VEGETABLE GHEE INDUSTRY IN KHYBER PAKHTUNKHWA**

**Annexure-XVI**

Year/Month	No. of Reporting Unit	Production		Value of Production		Employment			Salaries/Wages Paid (Rs.)		
		Cooking Oil	Ghee	Cooking Oil	Ghee	Total	Production	Non-Production	Total	Production	Non-Production
2000-01	6	1999	187487	60236	5601981	435	286	149	541	383	158
2001-02	6	9172	187148	281364	4566407	636	458	178	1500	996	504
2002-03	9	9641	200537	376860	7075981	768	510	258	2234	1408	826
2003-04	11	12832	219041	348544	7691288	834	574	260	1346	803	543
2004-05	12	30891	279477	785893	10275069	1185	824	361	2742	1675	1067
2005-06	12	32348	358908	1404160	14933715	1244	822	422	3848	2401	1447
2006-07	16	27744	338729	1239675	17568118	1242	864	378	4471	2685	1786
2007-08	20	31580	338872	1274201	21077720	865	597	268	4226	2324	1902
2008-09	17	37043	311226	2217129	26340529	1194	894	300	6065	4371	1694
2009-10	13	24994	236154	1642280	20094776	1057	717	340	5450	3296	2154
2010-11	17	29730	252036	2316211	26867917	948	695	253	6230	4119	2111
2011-12	25	40840	283911	4949648	37218122	1010	751	259	6701	4453	2248
2012-13	18	47059	261817	6726787	35895671	1068	811	257	7721	5201	2520
<u>Jul-Sep</u>	15	9911	64765	1403644	10399582	974	715	259	6741	4166	2575
Jul-2012	15	3162	25232	406795	3000646	853	620	233	5753	3324	2429
Aug-2012	15	3412	19879	501327	3114022	1041	787	254	7439	4792	2647
Sep-2012	14	3337	19654	495522	4284914	1029	739	290	7033	4383	2650
Oct-2012	13	2118	16300	321182	2166747	991	761	230	5699	3993	1706
Nov-2012	14	3038	24389	425651	2730841	1130	868	262	6980	4866	2114
Dec-2012	14	4462	23731	594619	2294869	1133	869	264	8654	5951	2703
Jan-2013	14	3207	26723	473313	4013339	1128	855	273	8585	5767	2818
Feb-2013	14	3302	25560	488002	4254882	1128	856	272	8595	5772	2823
Mar-2013	13	3578	21921	550370	2646608	1104	852	252	8671	6020	2651
Apr-2013	13	5406	19625	779897	2484715	1117	850	267	8530	5925	2605
May-2013	13	4763	18283	645407	2347295	1089	840	249	8376	5798	2578
Jun-2013	13	7274	20520	1044702	2556793	1072	833	239	8329	5815	2514
<u>2013-14</u> <u>Jul-Sep</u>	14	14017	61002	1892618	9089522	1032	809	223	8702	6192	2509
Jul-2013	14	6082	23007	912826	3140095	1134	865	269	8695	6082	2613
Aug-2013	14	3807	18957	523544	4019080	1033	821	212	8636	6124	2512
Sep-2013	13	4128	19038	456248	1930347	930	742	188	8774	6371	2403

**PRODUCTION AND EMPLOYMENT IN WOOLEN INDUSTRY IN KHYBER PAKHTUNKHWA**

**Annexure-XVII**

Year/Month	No. of Reporting Unit	Production		Value of Production		Employment			Salaries/Wages Paid (Rs.)		
		Blanket	Fibre	Blanket	Fibre	Total	Production	Non-Production	Total	Production	Non-Production
2000-01	2	51732	1485	18716	123098	5997	4591	1406	5442	4391	1051
2001-02	2	66995	1497	23986	131848	4866	3828	1038	5847	4586	1261
2002-03	2	63991	1331	23012	114070	5604	4268	1336	5538	3967	1571
2003-04	1	70864	1306	26101	114698	512	426	86	0	0	0
2004-05	2	98361	1253	33583	147697	850	634	216	2453	1538	915
2005-06	2	102284	1198	31525	151130	928	678	250	4615	3735	880
2006-07	2	64872	1317	20125	178683	1322	1056	266	5375	4277	1098
2007-08	2	89147	1605	21496	223850	537	432	105	2777	2413	364
2008-09	2	65599	1435	33871	212688	812	639	173	4751	3623	1128
2009-10	3	80365	131680	25116	306695	848	690	158	3838	3326	512
2010-11	2	55575	1638	17024	290951	462	395	67	3671	3339	332
2011-12	2	85567	1455	47694	383449	459	388	71	4803	3917	886
2012-13	1	62469	1574	34248	473542	485	405	80	4116	3229	887
<u>Jul-Sep</u>	1	21909	352	9847	105813	459	388	71	4926	4046	880
Jul-2012	1	7684	111	1668	33318	459	388	71	4799	3919	880
Aug-2012	1	7202	94	4141	28200	459	388	71	4990	4109	881
Sep-2012	1	7023	147	4038	44295	459	388	71	4990	4110	880
Oct-2012	1	6608	129	4049	38739	459	388	71	4993	4112	881
Nov-2012	1	6658	127	3828	38216	459	388	71	5114	4222	892
Dec-2012	1	9214	184	5328	55281	459	388	71	5137	4244	893
Jan-2013	1	4025	125	2314	37518	459	388	71	3335	2443	892
Feb-2013	1	1810	107	1049	32337	459	388	71	3335	2444	891
Mar-2013	1	3676	150	2113	45137	459	388	71	3331	2441	890
Apr-2013	1	4370	130	2512	39284	561	448	113	3330	2440	890
May-2013	1	1766	102	1495	30794	564	458	106	3023	2134	889
Jun-2013	1	2433	168	1713	50423	564	458	106	3014	2127	887
<u>2013-14</u> <u>Jul-Sep</u>	1	2919	368	1676	111027	628	512	116	3758	3490	268
Jul-2013	1	344	103	197	31114	628	512	116	2266	2266	0
Aug-2013	1	344	103	197	31114	628	512	116	2266	2266	0
Sep-2013	1	2231	162	1282	48799	628	512	116	6742	5939	803