

MONTHLY SURVEY OF INDUSTRIAL PRODUCTION & EMPLOYMENT IN KHYBER PAKHTUNKHWA



**BUREAU OF STATISTICS
PLANNING & DEVELOPMENT DEPARTMENT
GOVERNMENT OF KHYBER PAKHTUNKHWA**
www.kpbos.gov.pk

PREFACE

Bureau of Statistics has been publishing the Monthly Survey of Industrial Production and Employment Report on a regular basis since 1976 to provide important data on employment and production concerning Large Scale Manufacturing (LSM) industries in Khyber Pakhtunkhwa.

The survey report provides data for the month of **MARCH 2019** pertaining to various categories of large scale manufacturing industries covering **51** industrial establishments. It highlights information on the General Index of Industrial Production with 2005-06 its base and provides comparison of the latest available monthly data with the previous month of the current year and the corresponding month of the last year along with year-wise and month-wise comparative data.

It is expected that the publication will best serve the diverse needs of data users and would be especially instrumental in quantitative analysis and informed decision-making.

We are extremely indebted to the managements of the industrial units, Industries Department and Directorate of Industries for supplying the required data for publication of this report well in time. The team efforts of the staff of Bureau of Statistics in producing this monthly publication are also highly appreciated.

The publication has also been made available on the official website of the Bureau of Statistics www.kpbos.gov.pk to provide easy access to data users.

It is our endeavour to continuously refine presentation of the data. We would, as always, welcome suggestions to improve future series of the report.

Bureau of Statistics
Planning & Development Department
Government of Khyber Pakhtunkhwa

DIRECTOR

September ____, 2019

CONTENTS

Table No.	Title	Page No.
	Explanatory Note	i - iii
	Analytical Note on Industrial Production and Employment in Khyber Pakhtunkhwa March 2019.	1-3
1	Number of reporting units of selected items of regarding selected Large Scale Industries in Khyber Pakhtunkhwa during March 2019, February 2019 and March 2018.	4
2	Production of selected items regarding selected Large Scale Industries in Khyber Pakhtunkhwa during March 2019 & February 2019.	5
3	Production of selected items regarding selected Large Scale Industries in Khyber Pakhtunkhwa during March 2019 & March 2018.	6
4	Production of selected items regarding selected Large Scale Industries in Khyber Pakhtunkhwa during July-March 2018-19 & July-March 2017-18.	7
5	Total Employment in selected Large Scale Industries in Khyber Pakhtunkhwa during March 2019, February 2019 & March 2018.	8
6	Number of Production workers in selected Large Scale Industries in Khyber Pakhtunkhwa during March 2019, February 2019 & March 2018.	9
Annexure		
i.	Beverages Industry	10
ii.	Cement Industry	11
iii.	Ceramics Industry	12
iv.	Cigarettes Industry	13
v.	Cotton Textile Industry	14
vi.	Electric Bulb Industry	15
vii.	Fertilizer Industry	16
viii.	Matches Industry	17
ix.	Paper & Paper Board Industry	18
x.	Pharmaceutical	19
xi.	Sugar Industry	20
xii.	Vegetable Ghee Industry	21
xiii.	Woollen Textile Industry	22

EXPLANATORY NOTE

Introduction

The industrial sector is imperative for economic growth, employment creation, supply of basic necessities and building a competitive manufacturing economy. With its several linkages with other sectors of the economy the manufacturing sector is witnessing a gradual build up in terms of its share in GDP and value addition over the last years and its importance has increased significantly.

Reliable and current statistics are essential tools meant to facilitate the process of development especially through informed decisions in the spheres of plans and policies formulation, monitoring and evaluation and research.

The Monthly Survey of Industrial Production and Employment is a regular monthly publication of the Bureau of Statistics, Khyber Pakhtunkhwa. It was initiated in 1976 covering four industrial establishments namely Sugar, Tobacco, Cement and Paper and Paper Board. The coverage went on increasing and the current report covers 13 categories of Large Scale Manufacturing (LSM) industries.

The need for the Monthly Survey basically stemmed from the fact that the Census of Manufacturing Industries has a high time lag in availability of data. It is therefore conducted to bridge the information gap in intermittent period and to maintain a regular flow of data for routine application of data.

The Survey primarily aims at measuring the performance of industrial sector, updating existing data and providing evidence-based information on production and employment aspects of manufacturing sector to policymakers, planners and entrepreneurs and other data users for their respective uses in context of industrial development.

The report indicates information on the General Index of Industrial Production, which is a composite indicator that measures changes in the volume of production in a basket of industrial products during a given period with respect to the base year. The Index provided in this report used the Laspayer's Index.

For the purpose of this Survey Large Scale Manufacturing (LSM) is one which employs ten or more than ten workers. The employment data cover both regular and temporary workers.

Methodology

The questionnaire designed by Bureau of Statistics, Khyber Pakhtunkhwa is mailed to factory managers to provide required information on monthly basis. The set of information include production, value, number of production and non-production workers and their wages and salaries.

About 50-60 questionnaires are received through postal mail, fax and email, while for non-responding industrial units information are collected through personal visits by the officers/officials of the Bureau of Statistics.

Scope and Coverage

The Survey covers 13 types of Large Scale Manufacturing (LSM) industries comprising Beverages, Cement, Ceramics, Cigarettes, Cotton Textile, Electric Bulbs, Fertiliser, Matches, Paper and Paper Board, Pharmaceutical, Sugar, Vegetable Ghee and Woollen and 51 industrial units manufacturing 20 items in Khyber Pakhtunkhwa.

Editing

Upon the receipt of filled questionnaires from respondents information are examined and compared with previous data for accuracy and consistency. In case there is huge variation between the current and previous data, information are verified from concerned mangers of the industrial units. Some of the information which cannot be collected due to non-response is estimated on the basis of last month averages.

Data Entry and Final Report

Bureau of Statistics has developed the MIS containing a module of Industrial Production and Employment. The unit-wise data for each category is entered into the system, which generates reports indicating variations in production and employment, Industrial Production Index and Relative Index. Final report is prepared with proper tabulations, graphs and analysis.

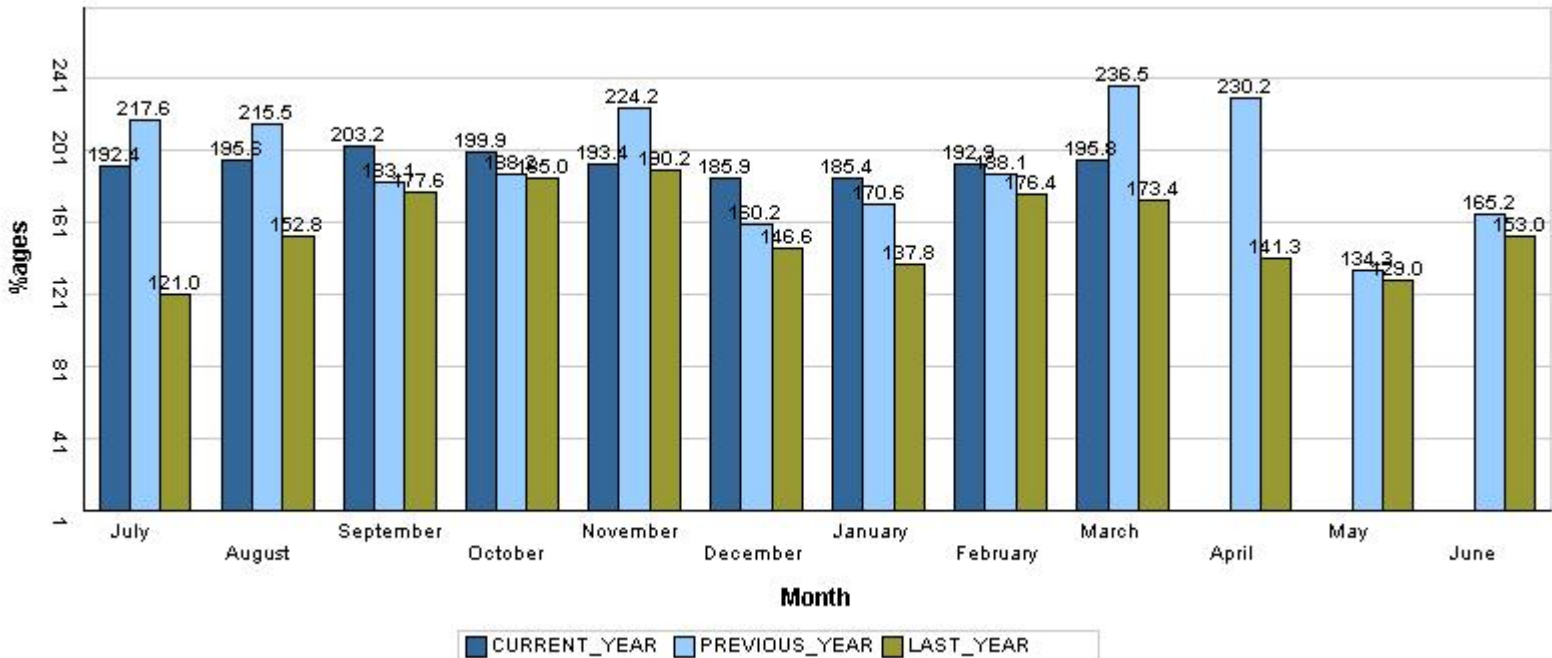
Dissemination

The report is disseminated to multiple data users through postal mail on monthly basis. It is also uploaded on the official web site of BOS to facilitate easy access. With an endeavour to refine future series of the report views from data users are always welcome and appreciated.

**INDEX OF INDUSTRIAL PRODUCTION IN THE KHYBER PAKHTUNKHWA
(BASE: 2005-06 = 100)**

Month	2015-16	2016-17	2017-18	2018-19
July	128.93	121.02	217.62	192.44
August	168.18	152.75	215.50	195.58
September	187.19	177.61	183.14	203.17
October	159.17	185.00	188.24	199.88
November	126.76	190.15	224.19	193.39
December	132.06	146.58	160.24	185.94
January	170.25	137.77	170.59	185.37
February	158.61	176.40	188.12	192.94
March	162.58	173.38	236.47	195.77
April	162.84	141.31	230.20	0.00
May	203.68	128.98	134.29	0.00
June	104.23	153.01	165.22	0.00
Monthly Average	155.37	157.00	192.82	

**Fig:1 GRAPH OF QUANTUM INDEX OF LARGE SCALE MANUFACTURING INDUSTRIES
(BASE: 2005-06 = 100)**



COVERAGE

This survey report covered 51 industrial units pertaining to 12 Large-Scale Manufacturing industries manufacturing 20 items, which contribute about 36% in the total value added of Large-Scale Manufacturing sector in Khyber Pakhtunkhwa.

INDUSTRIAL PRODUCTION INDEX

Industrial Production Index for the month of Mar-2019 stood at against 195.77 and 185.37 as compared to Jan-2019. The month and year wise Index Series are given at Fig-1.

PRODUCTION DURING MARCH-2019 VS FEBRUARY-2019

Overall production during the month of March-2019 over February-2019 was 1.47% Higher than February-2019.

Table 2 indicates category-wise manufacturing data with Relative Index. The production was lower in case of Board (100%), Ointments (63.64%), Injections (55.11%), Fabrics (40.63%), Ghee (12.2%), Cigarettes (11.08%), Liquids / Syrups (3.13%).

The production was higher in case of Fruit Juices (107.6%), Electric Bulb (47.82%), Tablets (44.74%), Capsules (34.13%), Gssp (26.02%), Cement (18.98%), Paper (12.92%), Wall Tiles (12.25%), Syrups & Squashes (8.87%), Cotton Yarn (8.38%), Cooking Oil (3.54%), Matches (3.33%).

PRODUCTION DURING MARCH-2019 VS MARCH-2018

Table 3 indicates category-wise manufacturing data with Relative Index. The Production was lower in case of Fruit Juices (93.45%), Fabrics (72.86%), Liquids / Syrups (47.27%), Cooking Oil (46.09%), Injections (33.17%), Cigarettes (30.39%), Ghee (29.75%), Cotton Yarn (20.47%), Beverages (11.87%), Tablets (4.09%).

The production was higher in case of Blankets (410.44%), Ointments (300%), Gssp (173.63%), Paper (59.28%), Wall Tiles (29.8%), Electric Bulb (15.3%), Capsules (15.03%), Syrups & Squashes (11.96%), Matches (9.25%), Cement (4.04%).

PRODUCTION DURING Jul-Mar-2018-19 & Jul-Mar-2017-18

Table 3 indicates category-wise manufacturing data with Relative Index. The production was lower in case of Ointments (71.14%), Liquids / Syrups (53.21%), Fabrics (46.26%), Ghee (12.55%), Cotton Yarn (12.11%), Board (11.92%), Cigarettes

(10.52%), Electric Bulb (8.89%), Cooking Oil (6.93%), Cement (3.57%)

The Production was higher in case of Tablets (100.35%), Blankets (65.92%), Capsules (57.14%), Syrups & Squashes (54.94%), Paper (28.16%), Gssp (16.96%), Beverages (14.32%), Matches (10.02%), Fruit Juices (2.6%), Wall Tiles (1.51%).

EMPLOYMENT DURING MARCH-2019 Vs FEBRUARY-2019

Total Employment during March 2019 was 0.08% less than February-2019.

Of the total employment production workers were 11237 and non-production workers were 3285.

REPORTED UNITS FOR THE MONTH OF MAR 2019 , FEB 2019 AND MAR 2018

Table 1

S.No.	Industry Name	March 2019	February 2019	March 2018
1	Beverages	4	4	4
2	Cement	7	7	7
3	Ceramics	1	1	1
4	Cigarettes	3	3	4
5	Cotton Textile	3	3	6
6	Electric Bulb	1	1	1
7	Fertilizer	1	1	1
8	Matches	9	9	9
9	Paper & Paper Board	1	2	2
10	Pharmaceutical	11	11	17
11	Sugar	0	0	3
12	Vegetable Ghee	9	9	10
13	Woolen	1	1	1
	Total	51	52	66

**PRODUCTION OF SELECTED ITEMS OF LARGE SCALE INDUSTRIES IN KHYBER
PAKHTUNKHWA DURING THE MONTH OF MARCH-2019 OVER FEBRUARY-2019**

Table 2

S. No.	Industry / Item	Unit Of Quantity	Production		Relative index Mar -2019 over Feb-2019
			Mar-2019	Feb-2019	
1	Beverages				
I	Beverages	Ltr	21446307	21436953	100.04
II	Fruit Juices	Ltr	415773	200276	207.6
III	Syrups & Squashes	Ltr	7751447	7119868	108.87
2	Cement				
I	Cement	M.Ton	1193065	1002782	118.98
3	Ceramics				
I	Wall Tiles	Sq.M	317193	282579	112.25
4	Cigarettes				
I	Cigarettes	M.Nos	2094	2355	88.92
5	Cotton Textile				
I	Cotton Yarn	M.Ton	5058	4667	108.38
6	Electric Bulb				
I	Electric Bulb	000 Nos	3731	2524	147.82
7	Fertilizer				
I	Gssp	M.Ton	8310	6594	126.02
8	Matches				
I	Matches	M.Box	248	240	103.33
9	Paper & Paper Board				
I	Board	M.Ton	0	527	0
II	Paper	M.Ton	970	859	112.92
10	Pharmaceutical				
I	Capsules	000 Nos	7616	5678	134.13
II	Injections	000 Nos	532	1185	44.89
III	Liquids / Syrups	000 Ltrs	309	319	96.87
IV	Ointments	Kg	4	11	36.36
V	Tablets	000 Nos	23800	16443	144.74
11	Sugar				
I	Sugar	M.Ton	0	0	0
12	Vegetable Ghee				
I	Cooking Oil	M.Ton	2925	2825	103.54
II	Ghee	M.Ton	11271	12837	87.8
13	Woolen				
I	Blankets	No	13792	1392	990.8
II	Fabrics	000 Mtrs	38	64	59.38

**PRODUCTION OF SELECTED ITEMS OF LARGE SCALE INDUSTRIES IN KHYBER
PAKHTUNKHWA DURING THE MONTH OF MARCH-2019 AND MARCH-2018**

Table 3

S. No.	Industry / Item	Unit Of Quantity	Production		Relative Index Mar -2019 over Mar-2018
			MAR-2019	MAR-2018	
1	Beverages				
I	Beverages	Ltr	21,446,307	24,334,120	88.13
II	Fruit Juices	Ltr	415,773	6,351,517	6.55
III	Syrups & Squashes	Ltr	7,751,447	6,923,590	111.96
2	Cement				
I	Cement	M.Ton	1,193,065	1,146,774	104.04
3	Ceramics				
I	Wall Tiles	Sq.M	317,193	244,368	129.8
4	Cigarettes				
I	Cigarettes	M.Nos	2,094	3,008	69.61
5	Cotton Textile				
I	Cotton Yarn	M.Ton	5,058	6,360	79.53
6	Electric Bulb				
I	Electric Bulb	000 Nos	3,731	3,236	115.3
7	Fertilizer				
I	Gssp	M.Ton	8,310	3,037	273.63
8	Matches				
I	Matches	M.Box	248	227	109.25
9	Paper & Paper Board				
I	Paper	M.Ton	970	609	159.28
10	Pharmaceutical				
I	Capsules	000 Nos	7,616	6,621	115.03
II	Injections	000 Nos	532	796	66.83
III	Liquids / Syrups	000 Ltrs	309	586	52.73
IV	Tablets	000 Nos	23,800	24,816	95.91
11	Sugar				
I	Sugar	M.Ton	0	0	0.00
12	Vegetable Ghee				
I	Cooking Oil	M.Ton	2,925	5,426	53.91
II	Ghee	M.Ton	11,271	16,044	70.25
13	Woolen				
I	Blankets	No	13,792	2,702	510.44
II	Fabrics	000 Mtrs	38	140	27.14

**PRODUCTION OF SELECTED ITEMS OF LARGE SCALE INDUSTRIES IN KHYBER
PAKHTUNKHWA DURING THE MONTH OF Jul-Mar:2018-2019 AND Jul-Mar:2017-2018**

Table 4

S. No.	Industry / Item	Unit Of Quantity	Production		Relative Index Jul-Mar - 2018-19 Over Jul-Mar - 2017-18
			Jul-Mar 2018-19	Jul-Mar 2017-18	
1.	BEVERAGES				
I	BEVERAGES	Ltr	192621357	168494149	114.32
II	FRUIT JUICES	Ltr	49298865	48051569	102.6
III	SYRUPS & SQUASHES	Ltr	24039763	15515042	154.94
2.	CEMENT				
I	CEMENT	M.Ton	9135150	9462617	96.54
3.	CERAMICS				
I	WALL TILES	Sq.M	2114358	2082978	101.51
4.	CIGARETTES				
I	CIGARETTES	M.Nos	21225	23721	89.48
5.	COTTON TEXTILE				
I	COTTON YARN	M.Ton	51139	58186	87.89
6.	ELECTRIC BULB				
I	ELECTRIC BULB	000 Nos	27093	29735	91.11
7.	FERTILIZER				
I	GSSP	M.Ton	59963	51268	116.96
8.	MATCHES				
I	MATCHES	M.Box	2186	1987	110.02
9.	PAPER & PAPER BOARD				
I	BOARD	M.Ton	3504	3978	88.08
II	PAPER	M.Ton	7387	5764	128.16
10.	PHARMACEUTICAL				
I	CAPSULES	000 Nos	108956	69335	157.14
II	INJECTIONS	000 Nos	8602	8602	100
III	LIQUIDS / SYRUPS	000 Ltrs	4319	9231	46.79
IV	OINTMENTS	Kg	1272	4408	28.86
V	TABLETS	000 Nos	350275	174832	200.35
11.	SUGAR				
I	SUGAR	M.Ton	0	0	0
12.	VEGETABLE GHEE				
I	COOKING OIL	M.Ton	39878	42848	93.07
II	GHEE	M.Ton	123277	140976	87.45
13.	WOOLEN				
I	BLANKETS	No	48604	29294	165.92
II	FABRICS	000 Mtrs	725	1349	53.74

TOTAL NUMBER OF EMPLOYMENT (PRODUCTION & NON-PRODUCTION) WORKERS IN SELECTED ITEMS OF LARGE SCALE INDUSTRIES IN KHYBER PAKHTUNKHWA DURING THE MONTH OF Mar-2019 , Feb-2019 AND Mar-2018

Table 5

S. No.	Industry	Employment (Non-Production)			Relative Index	
		Mar-19	Feb-19	Mar-18	Mar-2019 over Feb-2019	Mar-2019 over Mar-2018
1	Beverages	1217	1203	1314	101.16	92.62
2	Cement	3442	3503	3109	98.26	110.71
3	Ceramics	147	145	143	101.38	102.8
4	Cigarettes	580	518	598	111.97	96.99
5	Cotton Textile	5642	5664	5572	99.61	101.26
6	Electric Bulb	174	174	150	100	116
7	Fertilizer	185	181	189	102.21	97.88
8	Matches	1232	1240	1349	99.35	91.33
9	Paper & Paper Board	0	111	31	0	0
10	Pharmaceutical	583	436	878	133.72	66.4
11	Sugar	0	0	1700	0	0
12	Vegetable Ghee	842	862	853	97.68	98.71
13	Woolen	478	497	660	96.18	72.42

TOTAL NUMBER OF PRODUCTION WORKERS IN SELECTED ITEMS OF LARGE SCALE INDUSTRIES IN KHYBER PAKHTUNKHWA DURING THE MONTH OF Mar-2019, Feb-2019 AND Mar-2018

Table 6

S. No.	Industry	Production Workers			Relative Index	
		Mar-19	Feb-19	Mar-18	Mar-2019 over Feb-2019	Mar-2019 over Mar-2018
1	Beverages	740	755	771	98.01	95.98
2	Cement	2473	2531	2234	97.71	110.7
3	Ceramics	110	107	118	102.8	93.22
4	Cigarettes	365	308	377	118.51	96.82
5	Cotton Textile	4762	4768	4248	99.87	112.1
6	Electric Bulb	170	170	145	100	117.24
7	Fertilizer	141	137	147	102.92	95.92
8	Matches	1108	1118	1167	94.63	90.66
9	Paper & Paper Board	0	83	87	0	0
10	Pharmaceutical	336	222	484	138.29	63.43
11	Sugar	0	0	1283	0	0
12	Vegetable Ghee	640	619	628	103.39	101.91
13	Woolen	392	409	546	95.84	71.79

PRODUCTION AND EMPLOYMENT IN BEVERAGES INDUSTRY IN KHYBER PAKHTUNKHWA

Annexure-I

Year/ Month	No. of Report ing Unit	Production			Value of Production Rs.000			Employment (Nos)			Salaries/Wages Paid Rs. 000		
		Beverages (Liter)	Fruit Juices (Liter)	Syrups & Squashes (Liter)	Beverages	Fruit Juices	Syrups & Squashes	Total	Produ- ction	Non- Produ- ction	Total	Produ- ction	Non- Produ- ction
2000-01	2	4412671	0	0	616253	0	0	338	86	252	688	159	529
2001-02	2	4968896	0	0	872846	0	0	319	80	239	1730	399	1331
2002-03	2	4379549	0	0	758233	0	0	295	86	209	1592	443	1149
2003-04	2	4944266	0	0	954858	0	0	267	91	176	668	184	484
2004-05	2	4351032	0	0	2285315	0	0	218	66	152	338	102	236
2005-06	1	5346986	0	0	1256464	0	0	249	60	189	0	0	0
2006-07	2	7842285	0	0	1107999	0	0	295	84	211	25	18	7
2007-08	3	8889115	0	0	1624340	0	0	265	66	199	19	13	6
2008-09	2	10539438	2019633	0	1814374	505771	0	292	78	214	0	0	0
2009-10	2	83314494	10373838	0	2803255	103545	0	290	55	235	0	0	0
2010-11	6	97681697	24309103	13525408	6038288	5646027	2044639	660	254	406	4655	2082	2573
2011-12	7	131312219	76208221	21402446	8702110	540002085	1628910085	944	382	562	5369	3094	2275
2012-13	8	109399382	64685485	34348999	22826679	347758034	785584229	1152	473	679	5640	2869	2771
2013-14	7	161196546	31062657	35972662	57336295	119747623	6912454	1124	499	625	7045	3721	3324
2014-15	7	193378135	59481116	45235623	81099271	22494266	42502321	1226	720	506	9055	4506	4549
2015-16	8	119148911	70352452	73615419	16000792	3969887	12566259	1404	711	693	31130	17073	14057
2016-17	7	238496303	63799524	49655373	10188553	4384764	7735866	1206	547	659	23446	9899	13547
2017-18	7	251942902	73927550	42755744	28039065	4314789	20419808	990	603	387	19851	14547	5304
Jul-Mar	5	168494149	48051569	15515042	11655019	2643474	14503217	917	540	377	15499	10249	5250
Jul-2017	6	23165710	6485007	134283	0	453821	28481	658	417	241	9444	5131	4313
Aug-2017	4	22942951	6754970	13228	1152186	431900	1584	736	500	236	5119	3617	1502
Sep-2017	5	22738641	6592332	495728	645276	403440	104188	864	484	380	6719	5232	1487
Oct-2017	5	9738086	6492710	35819	645276	377009	4922169	835	453	382	10819	5217	5602
Nov-2017	5	28995660	3365254	25159	205153	218360	4920924	823	426	397	10198	4371	5827
Dec-2017	5	20996480	3970166	2940541	148664	88692	623098	941	561	380	11472	5758	5714
Jan-2018	5	4866201	4054919	58524	173158	248968	1193160	940	539	401	31177	24992	6185
Feb-2018	5	10716300	3984694	4888170	505224	29819	1112247	1003	601	402	33068	27050	6018
Mar-2018	4	24334120	6351517	6923590	8180082	391465	1597366	1206	771	435	15712	9204	6508
Apr-2018	5	24540411	6208464	9013558	8014551	659078	2037700	1314	847	467	44820	38141	6679
May-2018	5	27066739	10115526	17161275	5492185	447937	3632148	1354	887	467	17756	10529	7227
Jun-2018	5	31841603	9551991	1065869	2877310	564300	246743	1201	744	457	41900	35320	6580
2018-19 Jul- Mar	5	192621357	49298865	24039763	22501701	2275263	5668998	1182	624	558	19950	12985	6965
Jul-2018	5	21401253	9524693	143848	1487718	522930	143574	1126	656	470	14131	7342	6789
Aug-2018	5	21378468	6920627	43800	1153611	193933	88780	978	511	467	13713	6741	6972
Sep-2018	6	21407136	14606567	10438	2780739	549867	242370	1768	520	1248	12985	6419	6566
Oct-2018	6	21387888	9024002	75542	1831851	500669	172301	1005	534	471	13971	6867	7104
Nov-2018	6	21387888	4023617	757488	1831851	207903	547175	998	524	474	12481	5621	6860
Dec-2018	5	21378468	2277161	2398019	1153611	113432	553086	1142	659	483	14240	7226	7014
Jan-2019	5	21396996	2306149	5739313	2304864	116427	1328544	1204	720	484	39044	31761	7283
Feb-2019	4	21436953	200276	7119868	4744044	23075	722318	1203	755	448	42120	35368	6752
Mar-2019	4	21446307	415773	7751447	5213412	47027	1870850	1217	740	477	16867	9524	7343

PRODUCTION AND EMPLOYMENT IN CEMENT INDUSTRY IN KHYBER PAKHTUNKHWA

Annexure-II

Year/Month	No. of Reporting Unit	Production in MT	Value (Rs. in 000)	Employment (Nos)			Salaries/Wages Paid (Rs. 000)		
				Total	Production	Non-Production	Total	Production	Non-Production
2001-02	4	1976109	1096344	1467	860	607	6654	3456	3198
2002-03	4	3228029	3233573	1467	951	516	6111	3605	2506
2003-04	5	4181258	5257389	1347	908	439	3782	2348	1434
2004-05	4	4632995	6920750	956	739	217	1501	1360	141
2005-06	4	5136146	16143498	1083	833	250	5899	4622	1277
2006-07	5	6838947	28718882	1681	1243	438	12001	9331	2670
2007-08	6	7339248	34479686	1677	1261	416	11969	9856	2113
2008-09	6	6874597	17429543	2086	1624	462	13852	11106	2746
2009-10	7	8573131	31671116	2465	1835	630	25405	19474	5931
2010-11	8	8572389	49169544	2516	1875	641	31262	23026	8236
2011-12	8	8813090	73386819	2644	1933	711	39853	29015	10838
2012-13	8	9328749	64607345	2793	2037	756	45792	32340	13452
2013-14	8	9237287	75523661	3033	2301	732	42711	30853	11858
2014-15	8	9603794	77720199	3069	2343	726	45623	33069	12554
2015-16	8	10438301	30811646	3113	2285	828	63343	44936	18407
2016-17	7	10574379	96646742	3074	2209	865	114280	86793	27487
2017-18	7	12405620	39892197	3201	2286	915	904096	787248	116848
Jul-Mar	7	9462617	26135827	3218	2295	922	1172403	1025162	147241
Jul-2017	7	987490	1494563	3368	2381	987	8991171	8079123	912048
Aug-2017	7	1029585	1180253	3363	2391	972	110830	82390	28440
Sep-2017	7	967755	1074817	3370	2393	977	107827	78901	28926
Oct-2017	7	1081734	2696409	3208	2308	900	100571	74707	25864
Nov-2017	7	1114908	2554663	3098	2228	870	93891	68080	25811
Dec-2017	7	1028422	2313766	3121	2213	908	218619	181008	37611
Jan-2018	7	1061895	6021459	3156	2259	897	381510	300996	80514
Feb-2018	7	1044054	6058481	3148	2251	897	372798	291924	80874
Mar-2018	7	1146774	2741416	3128	2234	894	174413	69328	105085
Apr-2018	7	1094229	2564739	3109	2221	888	99392	73259	26133
May-2018	7	977709	5829638	3174	2280	894	100271	74771	25500
Jun-2018	7	871065	5361993	3164	2267	897	97861	72491	25370
2018-19Jul-Mar	7	9124618	57589104	3427	2475	952	108929	79996	28933
Jul-2018	7	925836	5620204	3164	2260	904	97385	71118	26267
Aug-2018	7	976575	6388654	3184	2280	904	98334	72039	26295
Sep-2018	7	990095	5817195	3452	2450	1002	116000	82592	33408
Oct-2018	7	1037970	6101629	3455	2449	1006	112917	86947	25970
Nov-2018	7	937076	5952961	3424	2522	902	107592	82255	25337
Dec-2018	7	1043132	7030353	3773	2855	918	123794	99262	24532
Jan-2019	7	1015791	6816431	3444	2454	990	89052	57023	32029
Feb-2019	7	1002782	6796296	3503	2531	972	116131	86651	29480
Mar-2019	7	1195361	7065381	3442	2473	969	119160	82080	37080

PRODUCTION AND EMPLOYMENT IN CERAMICS INDUSTRY IN KHYBER PAKHTUNKHWA

Annexure-III

Year/ Month	No. of Reporting Unit	Production		Value (Rs. in 000)		Employment (Nos)			Salaries/Wages Paid (Rs. 000)		
		Sanitary Ware (Pieces)	Wall Tiles (in Sq.Mtr)	Sanit- ary Ware	Wall Tiles	Total	Produ- ction	Non- Producti on	Total	Producti on	Non- Producti on
2001-02	1	0	643829	0	81838	113	91	22	274	218	56
2002-03	1	0	1146803	0	151652	99	77	22	279	220	59
2003-04	2	13750	1407693	3588	132709	104	77	27	268	202	66
2004-05	2	29545	1443957	7667	140170	120	84	36	390	266	124
2005-06	2	26079	1511371	6253	155750	131	90	41	442	320	122
2006-07	2	29461	1812548	6291	221798	153	118	35	541	431	110
2007-08	2	32016	2473633	9601	311712	200	132	68	695	538	157
2008-09	2	35639	2447234	15747	335935	191	143	48	1461	1263	198
2009-10	2	36262	2183589	14985	350856	201	150	51	1081	869	212
2010-11	2	48596	2059156	24194	404637	204	149	55	1250	952	298
2011-12	2	59180	2417179	29585	498802	203	150	53	1273	965	308
2012-13	2	81515	2155370	45218	915219	210	158	52	1773	1251	522
2013-14	2	88918	2139953	44457	570341	208	160	48	1956	1613	343
2014-15	2	79828	2336105	40909	972194	202	156	46	2017	1677	340
2015-16	2	89795	2572308	44525	670752	201	160	41	2001	1744	257
2016-17	2	93240	2572308	46620	670752	205	162	43	2001	1744	257
2017-18	1	0	2752214	0	824497	145	116	29	2307	1826	481
Jul-Mar	1	0	2082978		638928	145	116	29	2297	1814	483
Jul-2017	1	0	214359	0	55896	160	139	21	2001	1744	257
Aug-2017	1	0	288488	0	122248	135	101	34	2238	1662	576
Sep-2017	1	0	272386	0	91428	138	113	25	2295	1889	406
Oct-2017	1	0	285393	0	76074	139	112	27	2289	1846	443
Nov-2017	1	0	244665	0	69198	147	117	30	2458	1960	498
Dec-2017	1	0	167452	0	43574	148	118	30	2349	1859	490
Jan-2018	1	0	167664	0	58327	143	113	30	2398	1904	494
Feb-2018	1	0	198203	0	54719	144	114	30	2598	1904	694
Mar-2018	1	0	244368	0	67464	148	118	30	2049	1559	490
Apr-2018	1	0	246722	0	68199	143	113	30	2297	1822	475
May-2018	1	0	203535	0	56287	145	115	30	2313	1856	457
Jun-2018	1	0	218979	0	61083	147	117	30	2399	1912	487
2018-19Jul-Mar	1	0	2114358	0	680457	144	111	33	2367	1834	533
Jul-2018	1	0	201870	0	58493	148	118	30	2454	1964	490
Aug-2018	1	0	247383	0	93517	148	116	32	2434	1918	516
Sep-2018	1	0	216846	0	80644	144	114	30	2323	1840	483
Oct-2018	1	0	261570	0	96876	143	113	30	2381	1892	489
Nov-2018	1	0	275094	0	84212	146	110	36	2354	1775	579
Dec-2018	1	0	145554	0	42626	144	110	34	2376	1814	562
Jan-2019	1	0	166269	0	48934	133	105	28	2218	1758	460
Feb-2019	1	0	282579	0	83165	145	107	38	2361	1748	613
Mar-2019	1	0	317193	0	91990	147	110	37	2402	1798	604

PRODUCTION AND EMPLOYMENT IN CIGARETTES INDUSTRY IN KHYBER PAKHTUNKHWA

Annexure-IV

Year/ Month	No. of Reporting Unit	Production in Million Nos	Value (Rs. in 000)	Employment (Nos)			Salaries/Wages Paid (Rs. 000)		
				Total	Production	Non- Production	Total	Production	Non- Production
2001-02	6	17366	6766934	1642	1151	491	91	57	34
2002-03	5	13864	6203373	1579	1186	393	3528	2995	533
2003-04	6	14063	6703370	1489	1220	269	11544	9985	1559
2004-05	7	15918	8236263	1412	1134	278	11188	9819	1369
2005-06	4	17364	8692215	871	702	169	10941	9652	1289
2006-07	5	20777	13189374	879	708	171	12809	11437	1372
2007-08	5	20606	14876450	840	682	158	13612	12153	1459
2008-09	5	24217	19162180	925	767	158	14335	12918	1417
2009-10	7	19941	19229686	945	778	167	20332	18382	1950
2010-11	8	19673	21544188	941	775	166	26817	23055	3762
2011-12	8	27248	58730251	1074	898	176	28606	25935	2671
2012-13	9	22976	35110502	841	688	153	23531	21284	2247
2013-14	7	23312	51575123	853	708	145	25341	22518	2823
2014-15	7	22219	41737830	900	761	139	33636	30368	3268
2015-16	7	25548	49723601	775	540	235	9137	5676	3461
2016-17	5	25287	3338917	635	382	253	8283	5129	3154
2017-18	4	30198	49185823	587	370	217	49827	44877	4950
Jul-Mar	4	23721	39782188	583	368	215	55936	51041	4895
Jul-2017	4	2979	6007165	553	337	216	29150	24273	4877
Aug-2017	4	2822	4917415	575	368	207	256054	251305	4749
Sep-2017	4	2036	3860233	571	366	205	31006	26274	4732
Oct-2017	4	2738	4460888	567	363	204	30995	26254	4741
Nov-2017	4	2573	4713631	591	369	222	31380	26313	5067
Dec-2017	4	2408	3855511	614	391	223	31375	26308	5067
Jan-2018	4	2410	3737236	611	390	221	31371	26329	5042
Feb-2018	4	2747	3815514	565	349	216	31570	26885	4685
Mar-2018	4	3008	4414595	598	377	221	30521	25425	5096
Apr-2018	4	3049	3856438	598	377	221	33325	28164	5161
May-2018	4	2265	3761288	598	377	221	30594	25502	5092
Jun-2018	4	1163	1785909	598	377	221	30580	25488	5092
2018-19 Jul-Mar	4	21225	26990672	559	343	216	28916	24073	4843
Jul-2018	4	2467	9657861	598	377	221	30661	25569	5092
Aug-2018	4	2466	9646255	598	377	221	30669	25573	5096
Sep-2018	4	2670	54817	321	117	204	4998	1701	3297
Oct-2018	4	2495	771912	627	406	221	32445	27364	5081
Nov-2018	4	2492	765671	627	406	221	32481	27393	5088
Dec-2018	3	2093	754447	581	366	215	32477	27392	5085
Jan-2019	3	2093	754447	581	366	215	32477	27392	5085
Feb-2019	3	2355	3826607	518	308	210	31535	26866	4669
Mar-2019	3	2094	758655	580	365	215	32499	27406	5093

PRODUCTION AND EMPLOYMENT IN COTTON TEXTILE INDUSTRY IN KHYBER PAKHTUNKHWA

Annexure-V

Year/ Month	No. of Reporting Unit	Production		Value in (Rs.000)		Employment (Nos)			Salaries/Wages Paid (Rs. in 000)		
		Cotton Cloth (000 Mtr)	Cotton Yarn (MLT)	Cotton Cloth	Cotton Yarn	Total	Produ- ction	Non- Produ- ction	Total	Produ- ction	Non- Production
2001-02	7	3560	57138	32861	6553813	0	0	0	0	0	0
2002-03	8	6557	59386	60438	6959710	3747	2792	955	4344	2882	1462
2003-04	9	7823	69317	134418	8327030	8950	6630	2320	11796	7760	4036
2004-05	15	17674	86620	300364	10316963	10724	8253	2471	22293	15262	7031
2005-06	15	14067	106584	141515	13242872	11705	9131	2574	33648	25177	8471
2006-07	12	3510	96697	29305	12003673	13880	11068	2812	51091	39325	11766
2007-08	14	6931	89618	24502	11870298	11884	9367	2517	34820	26062	8758
2008-09	11	3290	88696	67632	12181160	10562	7781	2781	25323	21490	3833
2009-10	14	2824	96757	100692	19029564	9662	7626	2036	20444	16039	4405
2010-11	12	1974	89377	190300	28316120	8200	6436	1764	18637	14220	4417
2011-12	14	11351	86109	168135	25091312	8324	6785	1539	17702	16018	1684
2012-13	19	9842	110848	134772	30404249	10042	8377	1665	16161	14590	1571
2013-14	10	3613	107734	761347	30980022	7836	6442	1394	21550	19662	1888
2014-15	9	2436	107145	200868	28491116	7959	6543	1416	41528	36846	4682
2015-16	9	2436	85291	200868	16932060	7817	6497	1320	28529	21804	6725
2016-17	7	2233	81948	184129	21209139	8462	7131	1331	21330	18856	2474
2017-18	6	0	75156	83695	21607955	6581	5555	1026	19007	16731	2276
Jul-Mar	6		58186	83695	15828088	7300	6160	1140	22643	19841	2802
Jul-2017	6	0	6677	16739	1768867	8437	7091	1346	22062	19444	2618
Aug-2017	6	0	6656	16739	1773669	8439	7093	1346	22062	19444	2618
Sep-2017	6	0	6429	16739	1650249	5666	4851	715	21018	18387	2631
Oct-2017	6	0	6612	16739	1654165	7887	6458	1429	30589	26818	3771
Nov-2017	6	0	6492	0	1807111	8469	7144	1325	21544	18887	2657
Dec-2017	6	0	6486	16739	1831304	8477	7148	1329	21628	18968	2660
Jan-2018	6	0	6307	0	1798710	4976	4263	713	21827	19121	2706
Feb-2018	6	0	6167	0	1756948	8485	7147	1338	21890	19121	2769
Mar-2018	6	0	6360	0	1787065	4967	4248	719	21168	18382	2786
Apr-2018	3	0	5646	0	1850796	5572	4679	893	8096	7398	698
May-2018	3	0	5828	0	1990760	2069	1800	269	8096	7398	698
Jun-2018	3	0	5496	0	1938311	5630	4739	891	8096	7398	698
2018-19 Jul-Mar	4		51139		16603631	5844	4938	906	11004	10067	936
Jul-2018	4	0	6339	0	1911542	5991	5077	914	13262	12158	1104
Aug-2018	4	0	6350	0	1933161	6007	5084	923	13333	12200	1133
Sep-2018	4	0	6132	0	1799858	6005	5077	928	13432	12270	1162
Oct-2018	4	0	6223	0	1881797	5996	5078	918	13262	12158	1104
Nov-2018	4	0	5959	0	1804045	6008	5089	919	13361	12228	1133
Dec-2018	3	0	5332	0	1883798	5642	4757	885	8096	7398	698
Jan-2019	3	0	5079	0	1804492	5642	4752	890	8096	7398	698
Feb-2019	3	0	4667	0	1726849	5664	4768	896	8096	7398	698
Mar-2019	3	0	5058	0	1858089	5642	4762	880	8096	7398	698

PRODUCTION AND EMPLOYMENT IN ELECTRIC BULBS INDUSTRY IN KHYBER PAKHTUNKHWA

Annexure-VI

Year/ Month	No. of Reporting Unit	Production		Value (Rs. in 000)		Employment (Nos)			Salaries/Wages Paid (Rs. in 000)		
		Electric Bulb (000 Nos)	Electric Tubes (000 Mtr)	Electric Bulb	Electric Tubes	Total	Produ- ction	Non- Production	Total	Produ- ction	Non- Production
2001-02	2	43058	0	0	0	291	265	26	0	0	0
2002-03	2	51382	0	0	0	328	297	31	0	0	0
2003-04	2	54674	4227	116391	116391	572	522	50	0	0	0
2004-05	4	66700	6123	164112	164112	349	324	25	227	198	29
2005-06	3	63010	5120	116354	116354	539	503	36	318	278	40
2006-07	3	57326	5345	197844	197844	253	232	21	382	317	65
2007-08	3	50540	4286	158286	158286	435	381	54	772	612	160
2008-09	3	48742	2534	252	252	293	252	41	707	527	180
2009-10	3	48825	2914	117692	117692	95	84	11	188	137	51
2010-11	4	43484	1180	68439	68439	252	236	16	0	0	0
2011-12	4	40296	1266	76219	76219	272	255	17	0	0	0
2012-13	3	44204	1093	131278	131278	260	242	18	0	0	0
2013-14	2	40643	0	0	0	248	231	17	0	0	0
2014-15	2	32065	14	0	0	250	237	13	0	0	0
2015-16	2	43965	0	0	0	255	242	13	0	0	0
2016-17	2	43242	0	150	150	51	49	2	0	0	0
2017-18	1	40126	0	0	0	152	148	4	0	0	0
Jul-Mar	1	29735		319639		152	148	4	0	0	0
Jul-2017	1	3276	0	37667	0	157	153	4	0	0	0
Aug-2017	1	2684	0	30421	0	157	155	2	0	0	0
Sep-2017	1	3607	0	39677	0	157	152	5	0	0	0
Oct-2017	1	4659	0	53008	0	159	155	4	0	0	0
Nov-2017	1	4063	0	47618	0	156	153	3	0	0	0
Dec-2017	1	3933	0	47219	0	116	110	6	0	0	0
Jan-2018	1	3209	0	14422	0	172	167	5	0	0	0
Feb-2018	1	1068	0	12284	0	145	140	5	0	0	0
Mar-2018	1	3236	0	37223	0	150	145	5	0	0	0
Apr-2018	1	4057	0	50712	0	150	145	5	0	0	0
May-2018	1	3450	0	10612	0	152	148	4	0	0	0
Jun-2018	1	2884	0	37655	0	153	148	5	0	0	0
2018-19	1	27093	0	933596	524331	172	166	6	0	0	0
Jul-Mar											
Jul-2018	1	3822	0	511120	0	169	163	6	0	0	0
Aug-2018	1	3926	0	92322	0	175	169	6	0	0	0
Sep-2018	1	2879	0	117409	0	175	167	8	0	0	0
Oct-2018	1	2735	0	110490	0	166	159	7	0	0	0
Nov-2018	1	2429	0	0	137604	166	160	6	0	0	0
Dec-2018	1	2458	0	0	169881	172	167	5	0	0	0
Jan-2019	1	2589	0	0	130018	173	168	5	0	0	0
Feb-2019	1	2524	0	0	86828	174	170	4	0	0	0
Mar-2019	1	3731	0	102255	0	174	170	4	0	0	0

PRODUCTION AND EMPLOYMENT IN FERTILIZER INDUSTRY IN KHYBER PAKHTUNKHWA

Annexure-VII

Year/ Month	No. of Reporting Unit	Production in M.T.	Value (Rs. in 000)	Employment (Nos)			Salaries/Wages Paid (Rs.000)		
				Total	Produ- ction	Non- Production	Total	Produ- ction	Non- Production
2001-02	1	113340	539664	250	161	89	0	0	0
2002-03	1	80007	411483	144	48	96	0	0	0
2003-04	1	92905	528136	180	44	136	0	0	0
2004-05	1	87340	539234	233	51	182	0	0	0
2005-06	1	85455	1072436	256	53	203	0	0	0
2006-07	1	81930	590517	252	47	205	0	0	0
2007-08	1	92380	590625	239	40	199	0	0	0
2008-09	1	91821	1346428	203	100	103	2635	1776	859
2009-10	1	101225	1321419	267	205	62	6387	4688	1699
2010-11	1	94263	1423949	269	210	59	6655	5207	1448
2011-12	1	68191	1519836	265	203	62	6875	5254	1621
2012-13	1	57822	1236272	240	185	55	6804	5251	1553
2013-14	1	75624	1526751	253	197	56	7981	6295	1686
2014-15	1	51382	963349	240	188	52	8192	6480	1712
2015-16	1	46237	760744	213	165	48	7634	5969	1665
2016-17	1	57048	2171574	198	152	46	7875	6099	1776
2017-18	1	64896	1050762	192	148	44	7132	5608	1524
Jul-Mar	1	51268	817571	194	150	44	7242	5689	1553
Jul-2017	1	5775	91245	199	155	44	7407	5768	1639
Aug-2017	1	6990	110442	197	153	44	7271	5665	1606
Sep-2017	1	6909	109162	196	152	44	7375	5746	1629
Oct-2017	1	7198	113728	196	151	45	7347	5725	1622
Nov-2017	1	6279	99208	195	150	45	7326	5680	1646
Dec-2017	1	5551	87705	193	149	44	6927	5484	1443
Jan-2018	1	5698	93447	194	149	45	7334	5850	1484
Feb-2018	1	3831	62828	191	147	44	7113	5653	1460
Mar-2018	1	3037	49806	191	147	44	7078	5630	1448
Apr-2018	1	3681	62016	189	145	44	7248	5736	1512
May-2018	1	5422	91347	186	142	44	6731	5302	1429
Jun-2018	1	4525	79828	185	141	44	6431	5058	1373
2018-19Jul-Mar	1	59963	1135163	184	140	44	6592	5238	1353
Jul-2018	1	6482	118391	184	141	43	6116	4873	1243
Aug-2018	1	1413	25807	185	141	44	6120	4870	1250
Sep-2018	1	6117	111724	184	140	44	6631	5291	1340
Oct-2018	1	6117	111724	184	140	44	6631	5291	1340
Nov-2018	1	8310	158250	185	141	44	6751	5350	1401
Dec-2018	1	8310	158250	185	141	44	6751	5350	1401
Jan-2019	1	8310	158250	185	141	44	6751	5350	1401
Feb-2019	1	6594	134517	181	137	44	6824	5421	1403
Mar-2019	1	8310	158250	185	141	44	6751	5350	1401

PRODUCTION AND EMPLOYMENT IN MATCH INDUSTRY IN KHYBER PAKHTUNKHWA

Annexure-VIII

Year/ Month	No. of Reporting Unit	Production in M.Nos.	Value (Rs. in 000)	Employment (Nos)			Salaries/Wages Paid (Rs. in 000)		
				Total	Production	Non- Production	Total	Production	Non- Production
2001-02	5	945	234925	235	211	24	413	350	63
2002-03	3	1123	250099	256	225	31	719	598	121
2003-04	7	2591	696433	548	456	92	479	342	137
2004-05	13	2630	697400	641	536	105	849	628	221
2005-06	10	4036	1403202	1709	1486	223	3793	2942	851
2006-07	15	5168	1721495	1041	850	191	2944	2353	591
2007-08	16	5535	1581460	908	736	172	2728	2152	576
2008-09	14	4601	1504411	1917	1592	325	7994	6254	1740
2009-10	16	4494	1433559	2231	1820	411	7652	5916	1736
2010-11	17	4359	1759573	1944	1669	275	8797	7023	1774
2011-12	15	3984	1488998	2536	2260	276	15171	13195	1976
2012-13	16	4757	2188252	1647	1450	197	15918	13738	2180
2013-14	15	4580	2151827	1560	1359	201	11139	8390	2749
2014-15	14	3766	2284249	1475	1300	175	13714	10983	2731
2015-16	13	2864	1098529	1338	1184	154	17131	13550	3581
2016-17	11	2451	941785	1160	1037	123	14994	11936	3058
2017-18	12	2712	1573768	1244	1100	144	18173	15095	3078
Jul-Mar	9	1987	1147376	1214	1071	143	17686	14568	3118
Jul-2017	8	218	112339	1125	986	139	15449	12635	2814
Aug-2017	8	220	124085	1122	984	138	15646	12823	2823
Sep-2017	9	205	133440	1204	1054	150	16340	13377	2963
Oct-2017	9	221	102118	1157	1007	150	16622	13511	3111
Nov-2017	9	220	123601	1132	997	135	16743	13528	3215
Dec-2017	10	215	123162	1186	1043	143	17292	14133	3159
Jan-2018	10	243	155709	1351	1206	145	20018	16982	3036
Feb-2018	10	218	124445	1337	1191	146	20603	17492	3111
Mar-2018	9	227	148477	1306	1167	139	20461	16635	3826
Apr-2018	10	266	148008	1349	1201	148	20100	17089	3011
May-2018	10	238	145067	1343	1196	147	19831	16757	3074
Jun-2018	10	221	133317	1312	1164	148	18966	16179	2787
2018-19 Jul-Mar	9	2186	1458163	1227	1102	125	19015	16179	2836
Jul-2018	9	227	143413	1205	1074	131	17964	15242	2722
Aug-2018	9	233	150213	1198	1073	125	20010	17234	2776
Sep-2018	9	238	150032	1189	1070	119	16834	14271	2563
Oct-2018	10	258	160287	1249	1127	122	17858	15076	2782
Nov-2018	10	252	186098	1261	1130	131	20417	17551	2866
Dec-2018	9	238	158648	1229	1103	126	19021	16052	2969
Jan-2019	9	252	175403	1241	1119	122	19127	16165	2962
Feb-2019	9	240	164036	1240	1118	122	19123	16275	2848
Mar-2019	9	248	170033	1232	1108	124	20779	17743	3036

PRODUCTION AND EMPLOYMENT IN PHARMACEUTICALS INDUSTRY IN KHYBER PAKHTUNKHWA

Annexure-X

Year/ Month	No. of Report- ing Unit	Production						Value of Production in (Rs.000)						Employment (Nos)			Salaries/Wages Paid (Rs. in 000)		
		Capsules (000 Nos)	Galanical Tinctures/ Spirits (000 Ltr)	Injec- tions (000 Nos)	Liquids/ Syrups (000 Ltr)	Ointmnts (Kg)	Tablets (000 Nos)	Capsule	Galanical Tinctures/ Spirits	Injec- tion	Liquids/ Syrups	Ointmit	Tablet	Total	Productio n	Non- Productio n	Total	Production	Non- Production
2005-06	9	7737625	39	1784	1263011	46320	143399153	322220	4578360	95307	93226985	23073270	207119889	587	327	260	1787784	1144371	643413
2006-07	10	7265950	5	1724	348573	24851	152996146	12456400	871856	83188	98071458	27801048	188262714	602	328	274	2178015	1455593	722422
2007-08	10	8671607	0	349012	1474324	23307	44606938	6634356	0	149407	20106875	36069	7613553	726	433	293	3150358	2174071	976287
2008-09	13	8678479	0	228418	1013189	1240	30076596	3518090	0	321895	13579801	46073	6656003	749	446	303	2653941	2026674	627267
2009-10	10	14381973	0	300585	1615027	39822	79504742	19076605	1960	770009	53943188	10700353	160169922	182	104	78	440072	312345	127727
2010-11	72	270278	469	6616	342462	36837	1094030	4531262	0	131968	6029438	60286	9790828	1530	957	573	819078	578740	240338
2011-12	72	226415	12	887137	41382	37576	403061	1178211	0	10201367	428094	28540	2817299	1008	654	354	153495	99537	53958
2012-13	50	442982	0	10074	69701	110014	3716145	1082534	8533	182430	252426	40727	4440743	1145	789	356	13203	7303	5900
2013-14	35	112429	0	8146	60319	49725	442031	890889	0	3092183	162411	102646	7334257	1098	784	314	15920	10361	5559
2014-15	39	168308	0	12377	75318	65285	513861	715951	0	647089	292956	132438	3493431	1593	1040	553	23472	13282	10190
2015-16	35	187259	0	51590	72084	50295	438391	643703	0	417366	388793	115469	1528223	1251	854	397	20759	14047	6712
2016-17	24	202454	0	6633	5073	5825	159225	123558	4079	55941	182141	1688	314823	681	358	323	6542	4088	2454
2017-18	29	101817	5	10659	10741	4408	250144	212524	8065	114721	288591	1082	557856	782	474	308	11219	6870	4349
Jul-Mar	15	69335	5	8602	9231	4408	174832	148912	6555	99242	212661	1082	461873	754	439	315	10544	6307	4237
Jul-2017	11	6692	0	32	785	550	15019	12712	765	0	23970	0	34892	801	351	450	6486	4147	2339
Aug-2017	14	6148	0	2147	974	350	19858	14432	695	6499	26579	0	87445	977	485	492	11615	6289	5326
Sep-2017	14	5267	0	885	759	300	7888	18111	710	65868	24087	0	41078	746	442	304	12733	7510	5223
Oct-2017	17	6556	5	652	734	400	20994	22106	720	5992	23373	0	90098	690	436	254	11994	7039	4955
Nov-2017	14	12863	0	623	592	2508	15179	21133	750	3413	21639	1070	76719	511	298	213	7226	4372	2854
Dec-2017	14	9028	0	1305	1006	300	13698	15910	770	4150	24606	0	28576	682	384	298	10960	6509	4451
Jan-2018	16	9234	0	1308	679	0	29739	17637	690	4255	22666	12	34841	884	607	277	11178	6897	4281
Feb-2018	16	6926	0	854	3116	0	27641	14117	680	4259	23026	0	36049	766	463	303	11272	6972	4300
Mar-2018	17	6621	0	796	586	0	24816	12754	775	4806	22715	0	32175	732	484	248	11434	7029	4405
Apr-2018	21	14261	0	899	655	0	48824	22926	755	5136	25914	0	35069	878	590	288	13374	8699	4675
May-2018	22	10800	0	922	613	0	10470	17514	755	5169	25743	0	32816	828	546	282	12707	8135	4572
Jun-2018	20	7421	0	236	242	0	16018	23172	0	5174	24273	0	28098	887	602	285	13652	8843	4809
2018-19Jul-Mar	16	108956	0	8602	4319	1272	350275	173293	0	56493	190939	2867	266095	702	437	264	10327	6114	4213
Jul-2018	23	10569	0	266	787	560	42122	27138	0	7374	26635	376	37916	998	676	322	15559	9709	5850
Aug-2018	22	11694	0	1067	661	360	67310	28181	0	4841	26387	423	42002	977	658	319	15074	9359	5715
Sep-2018	21	15759	0	992	687	310	53919	23893	0	6119	24218	94	38904	947	634	313	14566	8899	5667
Oct-2018	20	10031	0	1100	492	8	22787	16963	0	6647	24962	376	36183	796	518	278	10317	6539	3778
Nov-2018	13	20488	0	1169	383	10	50191	13244	0	7110	19052	470	25232	540	307	233	6624	3650	2974
Dec-2018	13	21261	0	1141	375	5	49632	14471	0	4932	17642	235	22366	538	305	233	6623	3615	3008
Jan-2019	12	5860	0	1150	306	4	24071	16555	0	4866	17212	188	23283	499	279	220	6669	3662	3007
Feb-2019	11	5678	0	1185	319	11	16443	14975	0	9560	17638	517	17304	436	222	214	6667	3668	2999
Mar-2019	11	7616	0	532	309	4	23800	17873	0	5044	17193	188	22905	583	336	247	10840	5925	4915

PRODUCTION AND EMPLOYMENT IN VEGETABLE GHEE INDUSTRY IN KHYBER PAKHTUNKHWA

Annexure-XII

Year/ Month	No. of Reporting Unit	Production in M.Ton		Value in (Rs.000)		Employment (Nos)			Salaries/Wages Paid (Rs.000)		
		Cooking Oil	Ghee	Cooking Oil	Ghee	Total	Production	Non- Production	Total	Production	Non- Production
2000-01	6	1999	187487	60236	5601981	435	286	149	541	383	158
2001-02	6	9172	187148	281364	4566407	636	458	178	1500	996	504
2002-03	9	9641	200537	376860	7075981	768	510	258	2234	1408	826
2003-04	11	12832	219041	348544	7691288	834	574	260	1346	803	543
2004-05	12	30891	279477	785893	10275069	1185	824	361	2742	1675	1067
2005-06	12	32348	358908	1404160	14933715	1244	822	422	3848	2401	1447
2006-07	16	27744	338729	1239675	17568118	1242	864	378	4471	2685	1786
2007-08	20	31580	338872	1274201	21077720	865	597	268	4226	2324	1902
2008-09	17	37043	311226	2217129	26340529	1194	894	300	6065	4371	1694
2009-10	13	24994	236154	1642280	20094776	1057	717	340	5450	3296	2154
2010-11	17	29730	252036	2316211	26867917	948	695	253	6230	4119	2111
2011-12	25	40840	283911	4949648	37218122	1010	751	259	6701	4453	2248
2012-13	18	45350	263526	6507833	36114625	1068	811	257	7721	5201	2520
2013-14	15	60959	246177	7608140	32441348	1055	826	229	9562	6782	2780
2014-15	14	52809	232061	6388015	27216805	1059	821	238	10520	7483	3037
2015-16	15	48539	194963	5627735	20779630	1047	763	284	9812	6655	3157
2016-17	15	52364	201582	7086621	21154622	1007	716	291	43387	14662	28725
2017-18	10	54314	218864	7789276	18271315	881	635	246	11084	8298	2786
Jul-Mar	9	42848	140976	5829443	12844576	886	638	248	11654	8858	2796
Jul-2017	10	3978	16294	720875	1390879	918	654	264	12641	9157	3484
Aug-2017	10	4029	18320	792810	1536557	919	657	262	11759	8522	3237
Sep-2017	9	3784	15532	469417	1439553	875	632	243	11101	8162	2939
Oct-2017	9	5470	17244	720144	1568576	878	637	241	11134	8171	2963
Nov-2017	8	4713	14079	582574	1179841	874	636	238	11195	8149	3046
Dec-2017	8	5523	16718	582574	1203781	874	631	243	10611	8101	2510
Jan-2018	9	5170	14488	541837	1333044	876	631	245	10730	8190	2540
Feb-2018	9	4755	12257	738418	1404881	881	634	247	15319	13075	2244
Mar-2018	9	5426	16044	680794	1787464	873	628	245	10397	8197	2200
Apr-2018	9	3781	15593	428043	1769398	853	629	224	9645	6603	3042
May-2018	9	3955	47670	450862	1959156	873	627	246	9262	6628	2634
Jun-2018	9	3730	14625	1080928	1698185	873	625	248	9214	6619	2595
2018-19 Jul-Mar	8	39878	123277	6778348	14340249	853	614	239	12758	9631	3126
Jul-2018	7	7096	17522	1234180	1353556	841	603	238	12250	8806	3444
Aug-2018	8	5735	14584	602904	1546435	858	610	248	10958	7946	3012
Sep-2018	8	5141	14404	636094	1735494	857	609	248	24835	21768	3067
Oct-2018	8	5059	14066	1253787	1540178	845	604	241	11178	7981	3197
Nov-2018	8	4132	12752	710748	1805794	865	618	247	11326	8108	3218
Dec-2018	8	2951	10146	539459	1407921	848	607	241	10932	7962	2970
Jan-2019	8	4014	15695	723158	2024676	862	619	243	10993	7743	3250
Feb-2019	8	2825	12837	507128	1486464	862	619	243	11162	8188	2974
Mar-2019	8	2925	11271	570890	1439731	842	640	202	11187	8181	3006

PRODUCTION AND EMPLOYMENT IN WOOLEN INDUSTRY IN KHYBER PAKHTUNKHWA

Annexure-XIII

Year/ Month	No. of Report ing Unit	Production		Value in (Rs.000)		Employment (Nos)			Salaries/Wages Paid (Rs.000)		
		Blanket (Nos)	Fibre (000 Mtr)	Blanket	Fibre	Total	Produ- ction	Non- Production	Total	Produc- tion	Non- Production
2002-03	2	63991	1331	23012	114070	5604	4268	1336	5538	3967	1571
2003-04	1	70864	1306	26101	114698	512	426	86	0	0	0
2004-05	2	98361	1253	33583	147697	850	634	216	2453	1538	915
2005-06	2	102284	1198	31525	151130	928	678	250	4615	3735	880
2006-07	2	64872	1317	20125	178683	1322	1056	266	5375	4277	1098
2007-08	2	89147	1605	21496	223850	537	432	105	2777	2413	364
2008-09	2	65599	1435	33871	212688	812	639	173	4751	3623	1128
2009-10	3	80365	131680	25116	306695	848	690	158	3838	3326	512
2010-11	2	55575	1638	17024	290951	462	395	67	3671	3339	332
2011-12	2	85567	1455	47694	383449	459	388	71	4803	3917	886
2012-13	1	62469	1574	34248	473542	485	405	80	4116	3229	887
2013-14	1	57894	1711	89797	459860	648	540	108	6308	5620	688
2014-15	1	85204	1501	63687	465044	683	598	85	7252	6553	699
2015-16	1	50119	1647	37395	488390	634	529	105	6469	5356	1113
2016-17	1	28229	1482	124007	432251	632	552	80	546	457	89
2017-18	4	32556	4762	801486	394939	1578	469	1109	5817	4922	895
Jul-Mar	1	29294	1349	54307	251059	1884	443	1441	5192	4530	662
Jul-2017	1	5219	367	9879	413	624	553	71	7355	6535	820
Aug-2017	1	3609	121	6831	42224	628	556	72	7897	7037	860
Sep-2017	1	5171	101	9542	35112	630	559	71	7085	6291	794
Oct-2017	1	2166	113	4010	39287	632	558	74	6698	5840	858
Nov-2017	1	1415	107	2611	37080	616	513	103	0	0	0
Dec-2017	1	2529	132	4666	558	6264	74	6190	890	890	0
Jan-2018	1	3954	136	7298	47537	634	558	76	7589	6635	954
Feb-2018	1	2529	132	4490	558	6264	74	6190	890	890	0
Mar-2018	1	2702	140	4980	48290	667	546	121	8325	6654	1671
Apr-2018	1	393	148	743949	51697	660	542	118	8155	6435	1720
May-2018	1	1392	161	1567	55947	655	549	106	7469	5873	1596
Jun-2018	1	1477	104	1663	36236	661	551	110	7451	5984	1467
2018-19 Jul-Mar	4	48604	725	54738	252548	560	476.55556	83.555556	5164	4489	675
Jul-2018	1	1536	115	1729	39991	643	546	97	8066	6495	1571
Aug-2018	1	0	108	0	37765	638	545	93	7577	7010	567
Sep-2018	1	8897	61	10018	21392	662	569	93	7590	7061	529
Oct-2018	1	12086	56	13608	19661	622	565	57	6420	6102	318
Nov-2018	1	2530	105	2848	36519	502	430	72	6593	5627	966
Dec-2018	1	7094	87	7987	30202	500	423	77	5903	4919	984
Jan-2019	1	1277	91	1450	31719	499	410	89	0	0	0
Feb-2019	1	1392	64	1567	22085	497	409	88	0	0	0
Mar-2019	1	13792	38	15531	13214	478	392	86	4325	3189	1136

