

# MONTHLY SURVEY OF INDUSTRIAL PRODUCTION & EMPLOYMENT IN KHYBER PAKHTUNKHWA



**BUREAU OF STATISTICS  
PLANNING & DEVELOPMENT DEPARTMENT  
GOVERNMENT OF KHYBER PAKHTUNKHWA**  
[www.kpbos.gov.pk](http://www.kpbos.gov.pk)

## PREFACE

Bureau of Statistics has been publishing the Monthly Survey of Industrial Production and Employment Report on a regular basis since 1976 to provide important data on employment and production concerning Large Scale Manufacturing (LSM) industries in Khyber Pakhtunkhwa.

The survey report provides data for the month of **MARCH 2017** pertaining to various categories of large scale manufacturing industries covering **60** industrial establishments. It highlights information on the General Index of Industrial Production with 2005-06 its base and provides comparison of the latest available monthly data with the previous month of the current year and the corresponding month of the last year along with year-wise and month-wise comparative data.

It is expected that the publication will best serve the diverse needs of data users and would be especially instrumental in quantitative analysis and informed decision-making.

We are extremely indebted to the managements of the industrial units, Industries Department and Directorate of Industries for supplying the required data for publication of this report well in time. The team efforts of the staff of Bureau of Statistics in producing this monthly publication are also highly appreciated.

The publication has also been made available on the official website of the Bureau of Statistics [www.kpbos.gov.pk](http://www.kpbos.gov.pk) to provide easy access to data users.

It is our endeavour to continuously refine presentation of the data. We would, as always, welcome suggestions to improve future series of the report.

Bureau of Statistics  
Planning & Development Department  
Government of Khyber Pakhtunkhwa

DIRECTOR

**November \_\_\_\_, 2017**

## CONTENTS

Table No.	Title	Page No.
	Explanatory Note	i - iii
	Analytical Note on Industrial Production and Employment in Khyber Pakhtunkhwa March 2017.	1-3
1	Number of reporting units of selected items of regarding selected Large Scale Industries in Khyber Pakhtunkhwa during March 2017, February 2017 and March 2016.	4
2	Production of selected items regarding selected Large Scale Industries in Khyber Pakhtunkhwa during March 2017 & February 2017.	5
3	Production of selected items regarding selected Large Scale Industries in Khyber Pakhtunkhwa during March 2017 & March 2016.	6
4	Production of selected items regarding selected Large Scale Industries in Khyber Pakhtunkhwa during July-March 2015-16 & July-March 2014-15.	7
5	Total Employment in selected Large Scale Industries in Khyber Pakhtunkhwa during March 2017, February 2017 & March 2016.	8
6	Number of Production workers in selected Large Scale Industries in Khyber Pakhtunkhwa during March 2017, February 2017 & March 2016.	9
<b>Annexure</b>		
i.	Beverages Industry	10
ii.	Cement Industry	11
iii.	Ceramics Industry	12
iv.	Cigarettes Industry	13
v.	Cotton Textile Industry	14
vi.	Electric Bulb Industry	15
vii.	Fertilizer Industry	16
viii.	Matches Industry	17
ix.	Paper & Paper Board Industry	18
x.	Pharmaceutical	19
xi.	Sugar Industry	20
xii.	Vegetable Ghee Industry	21
xiii.	Woollen Textile Industry	22

## EXPLANATORY NOTE

### Introduction

The industrial sector is imperative for economic growth, employment creation, supply of basic necessities and building a competitive manufacturing economy. With its several linkages with other sectors of the economy the manufacturing sector is witnessing a gradual build up in terms of its share in GDP and value addition over the last years and its importance has increased significantly.

Reliable and current statistics are essential tools meant to facilitate the process of development especially through informed decisions in the spheres of plans and policies formulation, monitoring and evaluation and research.

The Monthly Survey of Industrial Production and Employment is a regular monthly publication of the Bureau of Statistics, Khyber Pakhtunkhwa. It was initiated in 1976 covering four industrial establishments namely Sugar, Tobacco, Cement and Paper and Paper Board. The coverage went on increasing and the current report covers 13 categories of Large Scale Manufacturing (LSM) industries.

The need for the Monthly Survey basically stemmed from the fact that the Census of Manufacturing Industries has a high time lag in availability of data. It is therefore conducted to bridge the information gap in intermittent period and to maintain a regular flow of data for routine application of data.

The Survey primarily aims at measuring the performance of industrial sector, updating existing data and providing evidence-based information on production and employment aspects of manufacturing sector to policymakers, planners and entrepreneurs and other data users for their respective uses in context of industrial development.

The report indicates information on the General Index of Industrial Production, which is a composite indicator that measures changes in the volume of production in a basket of industrial products during a given period with respect to the base year. The Index provided in this report used the Laspayer's Index.

For the purpose of this Survey Large Scale Manufacturing (LSM) is one which employs ten or more than ten workers. The employment data cover both regular and temporary workers.

### **Methodology**

The questionnaire designed by Bureau of Statistics, Khyber Pakhtunkhwa is mailed to factory managers to provide required information on monthly basis. The set of information include production, value, number of production and non-production workers and their wages and salaries.

About 50-60 questionnaires are received through postal mail, fax and email, while for non-responding industrial units information are collected through personal visits by the officers/officials of the Bureau of Statistics.

### **Scope and Coverage**

The Survey covers 13 types of Large Scale Manufacturing (LSM) industries comprising Beverages, Cement, Ceramics, Cigarettes, Cotton Textile, Electric Bulbs, Fertiliser, Matches, Paper and Paper Board, Pharmaceutical, Sugar, Vegetable Ghee and Woollen and 60 industrial units manufacturing 24 items in Khyber Pakhtunkhwa.

### **Editing**

Upon the receipt of filled questionnaires from respondents information are examined and compared with previous data for accuracy and consistency. In case there is huge variation between the current and previous data, information are verified from concerned mangers of the industrial units. Some of the information which cannot be collected due to non-response is estimated on the basis of last month averages.

**Data Entry and Final Report**

Bureau of Statistics has developed the MIS containing a module of Industrial Production and Employment. The unit-wise data for each category is entered into the system, which generates reports indicating variations in production and employment, Industrial Production Index and Relative Index. Final report is prepared with proper tabulations, graphs and analysis.

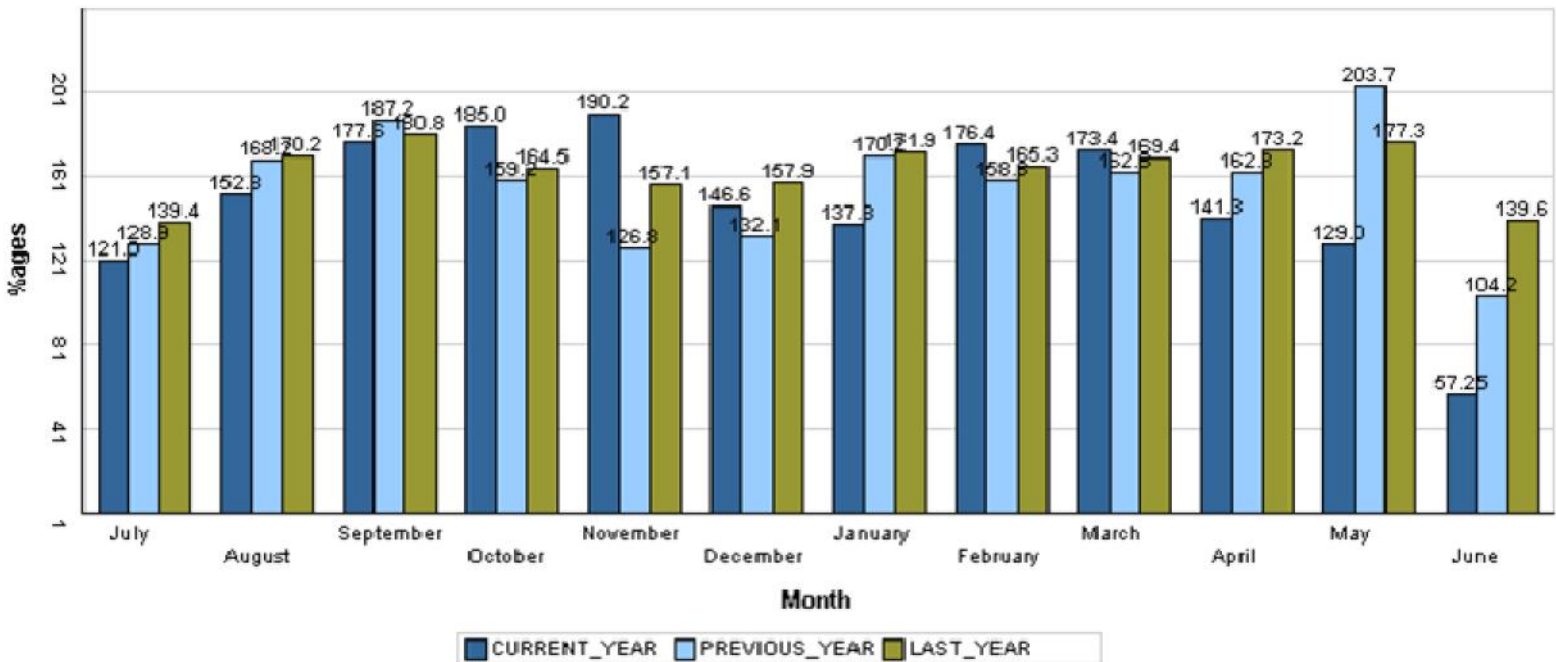
**Dissemination**

The report is disseminated to multiple data users through postal mail on monthly basis. It is also uploaded on the official web site of BOS to facilitate easy access. With an endeavour to refine future series of the report views from data users are always welcome and appreciated.

**INDEX OF INDUSTRIAL PRODUCTION IN THE KHYBER PAKHTUNKHWA  
(BASE: 2005-06 = 100)**

Month	2013-14	2014-15	2015-16	2016-17
July	124.66	139.38	128.93	121.02
August	149.51	170.24	168.18	152.75
September	152.71	180.85	187.19	177.61
October	151.56	164.51	159.17	185.00
November	160.74	157.07	126.76	190.15
December	141.88	157.91	132.06	146.58
January	126.30	171.94	170.25	137.77
February	143.47	165.34	158.61	176.40
March	152.40	169.36	162.58	173.38
April	179.37	173.17	162.84	141.31
May	191.02	177.34	203.68	128.98
June	147.07	139.58	104.23	57.25
<b>Monthly Average</b>	<b>151.72</b>	<b>163.89</b>	<b>155.37</b>	

**Fig:1 GRAPH OF QUANTUM INDEX OF LARGE SCALE MANUFACTURING INDUSTRIES  
(BASE: 2005-06 = 100)**



## Coverage

This survey report covered 60 industrial units pertaining to 13 Large-Scale Manufacturing industries manufacturing 24 items, which contribute about 36% in the total value added of Large-Scale Manufacturing sector in Khyber Pakhtunkhwa.

## Industrial Production Index

Industrial Production Index for the month of Mar-2017 stood at against 173.38 and 137.77 as compared to Jan-2017. The month and year wise Index Series are given at Fig-1.

### Production during March-2017 VS February-2017

Overall production during the month of March-2017 over February-2017 was 1.71% Lower than February-2017.

Table 2 indicates category-wise manufacturing data with Relative Index. The production was higher in case of Fabrics (16.94% ), Blankets (14.68% ), Cooking Oil (9.16% ), Paper (8.2% ), Sugar (5.59% ), Matches (5% ), Tablets (3.2% ), Capsules (2.05% ), Board (1.28% ).

The production was lower in case of Syrups & Squashes (40.95% ), Gssp (15.16% ), Fruit Juices (8.82% ), Cement (5.97% ), Cigarettes (5.4% ), Electric Bulb (4.08% ), Ghee (3.52% ), Liquids / Syrups (2.95% ).

### Production during March-2017 VS March-2016

Table 3 indicates category-wise manufacturing data with Relative Index. The production was higher in case of Gssp (52.7% ), Fabrics (20.83% ), Cooking Oil (20.22% ), Injections (13.86% ), Electric Bulb (5.09% ), Cement (4.38% ), Paper (4.18% ).

The Production was lower in case of Syrups & Squashes (99.84% ), Liquids / Syrups (95.52% ), Ointments (88.29% ), Tablets (87.81% ), Beverages (76.58% ), Capsules (68.69% ), Cigarettes (46.02% ), Fruit Juices (44.55% ), Blankets (38.21% ), Ghee (26.5% ), Board (20.2% ), Matches (19.23% ), Cotton Yarn (3% ).

### Production during Jul-Mar-2016-17 & Jul-Mar-2015-16.

Table 4 indicates category wise manufacturing data with relative index.



The Production was higher in case of Gssp (68.53% ), Beverages (33.22% ), Electric Bulb (27.02% ), Ghee (8.99% ), Paper (5.98% ), Sanitary Ware (5.18% ).

The production was lower in case of Liquids / Syrups (95.94% ), Ointments (88.62% ), Syrups & Squashes (85.75% ), Tablets (82.26% ), Injections (80.84% ), Capsules (57.57% ), Blankets (46.41% ), Cigarettes (21.76% ), Matches (20.87% ), Fabrics (17.88% ), Board (10.48% ), Fruit Juices (9.8% ), Cooking Oil (7.79% ), Cotton Yarn (1.72%).

### **Employment during March-2017 Vs February-2017**

Table 5 indicates employment status. Total Employment during March-2017 was 2.89% Higher than February-2017.

Of the total employment production workers were 18787 and non-production workers were 4279.

**REPORTED UNITS FOR THE MONTH OF MAR 2017, FEB 2017 AND MAR 2016**

Table 1

<b>S.No.</b>	<b>Industry Name</b>	<b>March 2017</b>	<b>February 2017</b>	<b>March 2016</b>
1	Beverages	5	6	6
2	Cement	7	7	7
3	Ceramics	2	2	2
4	Cigarettes	3	3	3
5	Cotton Textile	7	7	6
6	Electric Bulb	1	1	2
7	Fertilizer	1	1	1
8	Matches	8	7	11
9	Paper & Paper Board	2	2	3
10	Pharmaceutical	10	10	23
11	Sugar	3	2	5
12	Vegetable Ghee	10	9	14
13	Woolen	1	1	1
	<b>Total</b>	<b>60</b>	<b>58</b>	<b>84</b>

**PRODUCTION OF SELECTED ITEMS OF LARGE SCALE INDUSTRIES IN KHYBER  
PAKHTUNKHWA DURING THE MONTH OF MARCH-2017  
OVER FEBRUARY-2017**

Table 2

S. No.	Industry / Item	Unit Of Quantity	Production		Relative index Mar -2017 over Feb-2017
			Mar -2017	Feb-2017	
<b>1</b>	<b>Beverages</b>				
I	Beverages	Ltr	550058	550058	100
II	Fruit Juices	Ltr	3556315	3900114	91.18
III	Syrups & Squashes	Ltr	9207	15591	59.05
<b>2</b>	<b>Cement</b>				
I	Cement	M.Ton	874377	929865	94.03
<b>3</b>	<b>Ceramics</b>				
I	Sanitary Ware	Pcs	7770	7770	100
II	Wall Tiles	Sq.M	214359	214359	100
<b>4</b>	<b>Cigarettes</b>				
I	Cigarettes	M.Nos	1471	1555	94.6
<b>5</b>	<b>Cotton Textile</b>				
I	Cotton Cloth	000 Mtrs	203	203	100
II	Cotton Yarn	M.Ton	6617	6554	100.96
<b>6</b>	<b>Electric Bulb</b>				
I	Electric Bulb	000 Nos	3406	3551	95.92
<b>7</b>	<b>Fertilizer</b>				
I	Gssp	M.Ton	4471	5270	84.84
<b>8</b>	<b>Matches</b>				
I	Matches	M.Box	168	160	105
<b>9</b>	<b>Paper &amp; Paper Board</b>				
I	Board	M.Ton	474	468	101.28
II	Paper	M.Ton	673	622	108.2
<b>10</b>	<b>Pharmaceutical</b>				
I	Capsules	000 Nos	5484	5374	102.05
III	Injections	000 Nos	838	838	100
IV	Liquids / Syrups	000 Ltrs	230	237	97.05
V	Ointments	Kg	500	500	100
VI	Tablets	000 Nos	4839	4689	103.2
<b>11</b>	<b>Sugar</b>				
I	Sugar	M.Ton	608124	575925	105.59
<b>12</b>	<b>Vegetable Ghee</b>				
I	Cooking Oil	M.Ton	4613	4226	109.16
II	Ghee	M.Ton	12569	13027	96.48
<b>13</b>	<b>Woolen</b>				
I	Blankets	No	2039	1778	114.68
II	Fabrics	000 Mtrs	145	124	116.94

**PRODUCTION OF SELECTED ITEMS OF LARGE SCALE INDUSTRIES IN KHYBER  
PAKHTUNKHWA DURING THE MONTH OF MARCH 2017 AND MARCH 2016**

Table 3

S. No.	Industry / Item	Unit Of Quantity	Production		Relative Index Mar -2017 over Mar-2016
			MAR-2017	MAR-2016	
<b>1</b>	<b>Beverages</b>				
I	Beverages	Ltr	550058	2349129	23.42
II	Fruit Juices	Ltr	3556315	6413379	55.45
III	Syrups & Squashes	Ltr	9207	5603594	0.16
<b>2</b>	<b>Cement</b>				
I	Cement	M.Ton	874377	837654	104.38
<b>3</b>	<b>Ceramics</b>				
I	Sanitary Ware	Pcs	7770	7770	100
II	Wall Tiles	Sq.M	214359	214359	100
<b>4</b>	<b>Cigarettes</b>				
I	Cigarettes	M.Nos	1471	2725	53.98
<b>5</b>	<b>Cotton Textile</b>				
6	Cotton Cloth	000 Mtrs	203	203	100
III	Cotton Yarn	M.Ton	6617	6822	97
<b>6</b>	<b>Electric Bulb</b>				
I	Electric Bulb	000 Nos	3406	3241	105.09
<b>7</b>	<b>Fertilizer</b>				
I	Gssp	M.Ton	4471	2928	152.7
<b>8</b>	<b>Matches</b>				
I	Matches	M.Box	168	208	80.77
<b>9</b>	<b>Paper &amp; Paper Board</b>				
I	Board	M.Ton	474	594	79.8
II	Paper	M.Ton	673	646	104.18
<b>10</b>	<b>Pharmaceutical</b>				
I	Capsules	000 Nos	5484	17516	31.31
III	Injections	000 Nos	838	736	113.86
IV	Liquids / Syrups	000 Ltrs	230	5139	4.48
V	Ointments	Kg	500	4270	11.71
VI	Tablets	000 Nos	4839	39704	12.19
<b>11</b>	<b>Sugar</b>				
I	Sugar	M.Ton	608124	38563	1576.96
<b>12</b>	<b>Vegetable Ghee</b>				
I	Cooking Oil	M.Ton	4613	3837	120.22
II	Ghee	M.Ton	12569	17101	73.5
<b>13</b>	<b>Woolen</b>				
I	Blankets	No	2039	3300	61.79
II	Fabrics	000 Mtrs	145	120	120.83

**PRODUCTION OF SELECTED ITEMS OF LARGE SCALE INDUSTRIES IN KHYBER  
PAKHTUNKHWA DURING THE MONTH OF JUL-MAR: 2016-17 AND JUL-MAR: 2015-16**

Table 4

S. No.	Industry / Item	Unit Of Quantity	Production		Relative Index Jul-Mar - 2016-2017 Over Jul-Mar - 2015-2016
			Jul-Mar 2016-2017	Jul-Mar 2015-2016	
<b>1.</b>	<b>BEVERAGES</b>				
I	BEVERAGES	Ltr	98602841	74016066	133.22
II	FRUIT JUICES	Ltr	44401351	49224942	90.2
III	SYRUPS & SQUASHES	Ltr	7461177	52350559	14.25
<b>2.</b>	<b>CEMENT</b>				
I	CEMENT	M.Ton	7820847	7810417	100.13
<b>3.</b>	<b>CERAMICS</b>				
I	SANITARY WARE	Pcs	69930	66485	105.18
II	WALL TILES	Sq.M	1929231	1929231	100
<b>4.</b>	<b>CIGARETTES</b>				
I	CIGARETTES	M.Nos	15733	20109	78.24
<b>5.</b>	<b>COTTON TEXTILE</b>				
I	COTTON CLOTH	000 Mtrs	1827	1827	100
II	COTTON YARN	M.Ton	62239	63327	98.28
<b>6.</b>	<b>ELECTRIC BULB</b>				
I	ELECTRIC BULB	000 Nos	32862	25871	127.02
<b>7.</b>	<b>FERTILIZER</b>				
I	GSSP	M.Ton	47120	27959	168.53
<b>8.</b>	<b>MATCHES</b>				
I	MATCHES	M.Box	1763	2228	79.13
<b>9.</b>	<b>PAPER &amp; PAPER BOARD</b>				
I	BOARD	M.Ton	4435	4954	89.52
II	PAPER	M.Ton	5603	5287	105.98
<b>10.</b>	<b>PHARMACEUTICAL</b>				
I	CAPSULES	000 Nos	63239	149057	42.43
III	INJECTIONS	000 Nos	9230	48180	19.16
IV	LIQUIDS / SYRUPS	000 Ltrs	2684	66101	4.06
V	OINTMENTS	Kg	4600	40436	11.38
VI	TABLETS	000 Nos	65731	370438	17.74
<b>11.</b>	<b>SUGAR</b>				
I	SUGAR	M.Ton	2049669	236318	867.34
<b>12.</b>	<b>VEGETABLE GHEE</b>				
I	COOKING OIL	M.Ton	36143	39198	92.21
II	GHEE	M.Ton	155819	142972	108.99
<b>13.</b>	<b>WOOLEN</b>				
I	BLANKETS	No	18747	34985	53.59
II	FABRICS	000 Mtrs	1098	1337	82.12

**TOTAL NUMBER OF EMPLOYMENT (PRODUCTION & NON-PRODUCTION) WORKERS IN SELECTED ITEMS OF LARGE SCALE INDUSTRIES IN KHYBER PAKHTUNKHWA DURING THE MONTH OF Mar-2017, Feb-2017 AND Mar-2016**

Table 5

S. No.	Industry	Employment (Non-Production)			Relative Index	
		Mar-2017	Feb-2017	Mar-2016	Mar-2017 over Feb-2017	Mar-2017 over Mar-2016
1	Beverages	1137	1200	1214	94.75	93.66
2	Cement	3105	3167	3120	98.04	99.52
3	Ceramics	205	205	205	100	100
4	Cigarettes	108	108	749	100	14.42
5	Cotton Textile	8453	8453	7129	100	118.57
6	Electric Bulb	156	155	298	100.65	52.35
7	Fertilizer	195	193	204	101.04	95.59
8	Matches	1090	1096	1228	99.45	88.76
9	Paper & Paper Board	110	110	114	100	96.49
10	Pharmaceutical	286	283	1397	101.06	20.47
11	Sugar	2416	1834	3202	131.73	75.45
12	Vegetable Ghee	870	828	1055	105.07	82.46
13	Woolen	656	627	698	104.63	93.98

**TOTAL NUMBER OF PRODUCTION WORKERS IN SELECTED ITEMS OF LARGE SCALE INDUSTRIES IN KHYBER PAKHTUNKHWA DURING THE MONTH OF Mar-2017 , Feb-2017 AND Mar-2016**

Table 6

S. No.	Industry	Production Workers			Relative Index	
		Mar-2017	Feb-2017	Mar-2016	Mar-2017 over Feb-2017	Mar-2017 over Mar-2016
1	Beverages	504	547	582	92.14	86.6
2	Cement	2220	2236	2265	99.28	98.01
3	Ceramics	162	162	162	100	100
4	Cigarettes	80	80	476	50	8.4
5	Cotton Textile	7123	7123	5859	100	121.57
6	Electric Bulb	153	149	229	102.68	66.81
7	Fertilizer	150	148	158	101.35	94.94
8	Matches	997	1012	1143	98.52	87.23
9	Paper & Paper Board	80	80	84	100	95.24
10	Pharmaceutical	220	219	1082	81.28	16.45
11	Sugar	1641	1205	2121	136.18	77.37
12	Vegetable Ghee	623	597	778	104.36	80.08
13	Woolen	555	557	599	99.64	92.65

## PRODUCTION AND EMPLOYMENT IN BEVERAGES INDUSTRY IN KHYBER PAKHTUNKHWA

Annexure-I

Year/ Month	No. of Report ing Unit	Production			Value of Production Rs.000			Employment (Nos)			Salaries/Wages Paid Rs. 000		
		Beverages (Liter)	Fruit Juices (Liter)	Syrups & Squashes (Liter)	Beverages	Fruit Juices	Syrups & Squashes	Total	Produ- ction	Non- Produ- ction	Total	Produ- ction	Non- Produ- ction
2000-01	2	4412671	0	0	616253	0	0	338	86	252	688	159	529
2001-02	2	4968896	0	0	872846	0	0	319	80	239	1730	399	1331
2002-03	2	4379549	0	0	758233	0	0	295	86	209	1592	443	1149
2003-04	2	4944266	0	0	954858	0	0	267	91	176	668	184	484
2004-05	2	4351032	0	0	2285315	0	0	218	66	152	338	102	236
2005-06	1	5346986	0	0	1256464	0	0	249	60	189	0	0	0
2006-07	2	7842285	0	0	1107999	0	0	295	84	211	25	18	7
2007-08	3	8889115	0	0	1624340	0	0	265	66	199	19	13	6
2008-09	2	10539438	2019633	0	1814374	505771	0	292	78	214	0	0	0
2009-10	2	83314494	10373838	0	2803255	103545	0	290	55	235	0	0	0
2010-11	6	97681697	24309103	13525408	6038288	5646027	2044639	660	254	406	4655	2082	2573
2011-12	7	131312219	76208221	21402446	8702110	540002085	1628910085	944	382	562	5369	3094	2275
2012-13	8	109399382	64685485	34348999	22826679	347758034	785584229	1152	473	679	5640	2869	2771
2013-14	7	161196546	31062657	35972662	57336295	119747623	6912454	1124	499	625	7045	3721	3324
<b>2014-15</b>	<b>7</b>	<b>193378135</b>	<b>59481116</b>	<b>45235623</b>	<b>81099271</b>	<b>22494266</b>	<b>42502321</b>	<b>1226</b>	<b>720</b>	<b>506</b>	<b>9055</b>	<b>4506</b>	<b>4549</b>
2015-16	8	119148911	69007937	73615419	16000792	3803881	12566259	1404	711	693	31130	17073	14057
Jul-Mar	6	74016066	49224942	52350559	8885511	2478117	8432496	1406	707	699	26589	12551	14038
Jul-2015	7	15442926	6622092	6808852	1592	295118	1008961	1827	951	876	22699	7748	14951
Aug-2015	7	14711628	6622092	5363086	2058557	295118	958195	1016	620	396	22768	7155	15613
Sep-2015	7	19459240	6622092	5363086	2058557	295118	958195	1556	735	821	22768	7155	15613
Oct-2015	6	12864723	5452486	5363086	1241584	295118	958195	1525	735	790	22367	7144	15223
Nov-2015	6	2201171	5452486	5363086	372639	295118	958195	1497	730	767	22367	7144	15223
Dec-2015	6	2338950	5452486	5363086	255280	295118	958195	1455	727	728	22367	7144	15223
Jan-2016	6	2338950	1547879	9143417	255280	85988	760451	1499	769	730	35981	19945	16036
Feb-2016	5	2309349	5039950	3979266	158724	268579	783835	1090	510	580	34512	21470	13042
Mar-2016	6	2349129	6413379	5603594	2483298	352842	1088274	1189	582	607	33474	28058	5416
Apr-2016	6	2349129	6846113	5452209	2483298	421068	1067081	1214	610	604	42607	28609	13998
May-2016	7	22291795	6209613	8739205	1532449	474875	1699360	1489	792	697	45012	30638	14374
Jun-2016	6	20491921	6727269	7073446	3099534	429831	1367322	1483	768	715	46640	32663	13977
<b>2016-17 Jul- Mar</b>	<b>6</b>	<b>98602841</b>	<b>44401351</b>	<b>7461177</b>	<b>7923887</b>	<b>2688416</b>	<b>5654876</b>	<b>1183</b>	<b>521</b>	<b>661</b>	<b>22341</b>	<b>8123</b>	<b>14218</b>
Jul-2016	6	23226139	6533139	7011418	2748694	413929	1359134	1465	762	703	46600	32643	13957
Aug-2016	6	12943185	5917084	259567	566037	355577	472790	1167	483	684	19253	4850	14403
Sep-2016	6	20255211	5229944	100606	686254	309159	635919	1095	437	658	18583	4432	14151
Oct-2016	6	19989037	5814634	16803	653817	359793	499686	1090	432	658	18526	4598	13928
Nov-2016	6	19989037	5649893	16803	653817	338737	499686	1090	432	658	18526	4598	13928
Dec-2016	6	550058	3900114	15591	653817	236306	547126	1200	547	653	20195	5650	14545
Jan-2017	6	550058	3900114	15591	653817	236306	547126	1200	547	653	20195	5650	14545
Feb-2017	6	550058	3900114	15591	653817	236306	547126	1200	547	653	20195	5650	14545
Mar-2017	5	550058	3556315	9207	653817	202303	546283	1137	504	633	19000	5040	13960



## PRODUCTION AND EMPLOYMENT IN CEMENT INDUSTRY IN KHYBER PAKHTUNKHWA

Annexure-II

Year/Month	No. of Reporting Unit	Production in MT	Value (Rs. in 000)	Employment (Nos)			Salaries/Wages Paid (Rs. 000)		
				Total	Production	Non-Production	Total	Production	Non-Production
2000-01	3	1924161	3135250	1342	677	665	3989	1946	2043
2001-02	4	1976109	1096344	1467	860	607	6654	3456	3198
2002-03	4	3228029	3233573	1467	951	516	6111	3605	2506
2003-04	5	4181258	5257389	1347	908	439	3782	2348	1434
2004-05	4	4632995	6920750	956	739	217	1501	1360	141
2005-06	4	5136146	16143498	1083	833	250	5899	4622	1277
2006-07	5	6838947	28718882	1681	1243	438	12001	9331	2670
2007-08	6	7339248	34479686	1677	1261	416	11969	9856	2113
2008-09	6	6874597	17429543	2086	1624	462	13852	11106	2746
2009-10	7	8573131	31671116	2465	1835	630	25405	19474	5931
2010-11	8	8572389	49169544	2516	1875	641	31262	23026	8236
2011-12	8	8813090	73386819	2644	1933	711	39853	29015	10838
2012-13	8	9328749	64607345	2793	2037	756	45792	32340	13452
2013-14	8	9237287	75523661	3033	2301	732	42711	30853	11858
<b>2014-15</b>	<b>8</b>	<b>9603794</b>	<b>77720199</b>	<b>3069</b>	<b>2343</b>	<b>726</b>	<b>45623</b>	<b>33069</b>	<b>12554</b>
2015-16	8	10438301	30811646	4113	2285	1828	63343	44936	18407
Jul-Mar	7	7810417	23734276	3198	2355	843	61299	43497	17801
Jul-2015	8	784883	5890391	3497	2602	895	54862	37251	17611
Aug-2015	8	877382	6507085	3519	2613	906	65124	46552	18572
Sep-2015	8	978993	2272545	3506	2605	901	65477	47000	18477
Oct-2015	7	845144	1923792	2995	2200	795	55567	37717	17850
Nov-2015	7	845144	1923792	2995	2200	795	55567	37717	17850
Dec-2015	7	926182	994808	3047	2236	811	68591	49556	19035
Jan-2016	7	852079	1754568	3048	2234	814	65775	47518	18257
Feb-2016	7	862956	1003154	3075	2241	834	68150	49437	18713
Mar-2016	7	837654	1464141	3101	2265	836	52577	38729	13848
Apr-2016	7	855596	2403323	3120	2282	838	57164	37817	19347
May-2016	7	911815	2325302	14462	1792	12670	69193	48529	20664
Jun-2016	7	860473	2348745	2985	2149	836	82071	61409	20662
<b>2016-17 Jul-Mar</b>	<b>7</b>	<b>7820847</b>	<b>16940098</b>	<b>3042</b>	<b>2190</b>	<b>852</b>	<b>87275</b>	<b>64724</b>	<b>22551</b>
Jul-2016	7	641602	1227610	2984	2159	825	83083	61676	21407
Aug-2016	7	901765	953574	2982	2149	833	87721	63925	23796
Sep-2016	7	785109	1317675	3006	2174	832	86193	63140	23053
Oct-2016	7	925669	1390985	3003	2180	823	88779	66199	22580
Nov-2016	7	974157	1494937	3015	2182	833	87617	63871	23746
Dec-2016	7	928551	1489448	3045	2204	841	90729	66523	24206
Jan-2017	7	859752	5206034	3070	2209	861	89341	67340	22001
Feb-2017	7	929865	1807107	3167	2236	931	71936	55334	16602
Mar-2017	7	874377	2052728	3105	2220	885	100079	74507	25572

## PRODUCTION AND EMPLOYMENT IN CERAMICS INDUSTRY IN KHYBER PAKHTUNKHWA

Annexure-III

Year/ Month	No. of Reporting Unit	Production		Value (Rs. in 000)		Employment (Nos)			Salaries/Wages Paid (Rs. 000)		
		Sanitary Ware (Pieces)	Wall Tiles (in Sq.Mtr)	Sanit- ary Ware	Wall Tiles	Total	Produ- ction	Non- Production	Total	Produc- tion	Non- Production
2000-01	1	0	423342	0	54841	106	81	25	276	214	62
2001-02	1	0	643829	0	81838	113	91	22	274	218	56
2002-03	1	0	1146803	0	151652	99	77	22	279	220	59
2003-04	2	13750	1407693	3588	132709	104	77	27	268	202	66
2004-05	2	29545	1443957	7667	140170	120	84	36	390	266	124
2005-06	2	26079	1511371	6253	155750	131	90	41	442	320	122
2006-07	2	29461	1812548	6291	221798	153	118	35	541	431	110
2007-08	2	32016	2473633	9601	311712	200	132	68	695	538	157
2008-09	2	35639	2447234	15747	335935	191	143	48	1461	1263	198
2009-10	2	36262	2183589	14985	350856	201	150	51	1081	869	212
2010-11	2	48596	2059156	24194	404637	204	149	55	1250	952	298
2011-12	2	59180	2417179	29585	498802	203	150	53	1273	965	308
2012-13	2	81515	2155370	45218	915219	210	158	52	1773	1251	522
2013-14	2	88918	2139953	44457	570341	208	160	48	1956	1613	343
2014-15	2	79828	2336105	40909	972194	202	156	46	2017	1677	340
2015-16	2	89795	2572308	44525	670752	201	160	41	2001	1744	257
<u>Jul-Mar</u>	<u>2</u>	<u>66485</u>	<u>1929231</u>	<u>32870</u>	<u>503064</u>	<u>200</u>	<u>159</u>	<u>41</u>	<u>2001</u>	<u>1744</u>	<u>257</u>
Jul-2015	2	3900	214359	0	55896	160	139	21	2001	1744	257
Aug-2015	2	7890	214359	4734	55896	204	161	43	2001	1744	257
Sep-2015	2	7890	214359	4734	55896	204	161	43	2001	1744	257
Oct-2015	2	7955	214359	3977	55896	205	162	43	2001	1744	257
Nov-2015	2	7770	214359	3885	55896	205	162	43	2001	1744	257
Dec-2015	2	7770	214359	3885	55896	205	162	43	2001	1744	257
Jan-2016	2	7770	214359	3885	55896	205	162	43	2001	1744	257
Feb-2016	2	7770	214359	3885	55896	205	162	43	2001	1744	257
Mar-2016	2	7770	214359	3885	55896	205	162	43	2001	1744	257
Apr-2016	2	7770	214359	3885	55896	205	162	43	2001	1744	257
May-2016	2	7770	214359	3885	55896	205	162	43	2001	1744	257
Jun-2016	2	7770	214359	3885	55896	205	162	43	2001	1744	257
<u>2016-17</u> <u>Jul-Mar</u>	<u>1</u>	<u>69930</u>	<u>1929231</u>	<u>34965</u>	<u>503064</u>	<u>205</u>	<u>162</u>	<u>43</u>	<u>2001</u>	<u>1744</u>	<u>257</u>
Jul-2016	1	7770	214359	3885	55896	205	162	43	2001	1744	257
Aug-2016	1	7770	214359	3885	55896	205	162	43	2001	1744	257
Sep-2016	1	7770	214359	3885	55896	205	162	43	2001	1744	257
Oct-2016	1	7770	214359	3885	55896	205	162	43	2001	1744	257
Nov-2016	1	7770	214359	3885	55896	205	162	43	2001	1744	257
Dec-2016	1	7770	214359	3885	55896	205	162	43	2001	1744	257
Jan-2017	1	7770	214359	3885	55896	205	162	43	2001	1744	257
Feb-2017	1	7770	214359	3885	55896	205	162	43	2001	1744	257
Mar-2017	1	7770	214359	3885	55896	205	162	43	2001	1744	257

## RODUCTION AND EMPLOYMENT IN CIGARETTES INDUSTRY IN KHYBER PAKHTUNKHW

Year/ Month	No. of Reporting Unit	Production in Million Nos	Value (Rs. in 000)	Employment (Nos)			Salaries/Wages Paid (Rs. 000)		
				Total	Production	Non- Production	Total	Production	Non- Production
				2000-01	8	17519	7693964	2138	1614
2001-02	6	17366	6766934	1642	1151	491	91	57	34
2002-03	5	13864	6203373	1579	1186	393	3528	2995	533
2003-04	6	14063	6703370	1489	1220	269	11544	9985	1559
2004-05	7	15918	8236263	1412	1134	278	11188	9819	1369
2005-06	4	17364	8692215	871	702	169	10941	9652	1289
2006-07	5	20777	13189374	879	708	171	12809	11437	1372
2007-08	5	20606	14876450	840	682	158	13612	12153	1459
2008-09	5	24217	19162180	925	767	158	14335	12918	1417
2009-10	7	19941	19229686	945	778	167	20332	18382	1950
2010-11	8	19673	21544188	941	775	166	26817	23055	3762
2011-12	8	27248	58730251	1074	898	176	28606	25935	2671
2012-13	9	22976	35110502	841	688	153	23531	21284	2247
2013-14	7	23312	51575123	853	708	145	25341	22518	2823
2014-15	7	22219	41737830	900	761	139	33636	30368	3268
<b>2015-16</b>	<b>7</b>	<b>25548</b>	<b>49723601</b>	<b>775</b>	<b>540</b>	<b>235</b>	<b>9137</b>	<b>5676</b>	<b>3461</b>
Jul-Mar	4	20109	41474184	784	561	223	8966	5614	3352
Jul-2015	7	1149	2745380	1000	847	153	12427	8500	3927
Aug-2015	7	2174	5222937	998	847	151	12692	8687	4005
Sep-2015	4	2298	8893935	604	523	81	6716	3988	2728
Oct-2015	4	2395	4113664	804	523	281	6638	3913	2725
Nov-2015	3	1807	4098082	679	421	258	6608	3898	2710
Dec-2015	3	1807	4098082	679	421	258	6608	3898	2710
Jan-2016	4	3047	4099957	795	516	279	6530	3830	2700
Feb-2016	3	2707	4107371	749	476	273	6529	3829	2700
Mar-2016	3	2725	4094776	749	476	273	15949	9985	5964
Apr-2016	3	2725	4094776	749	476	273	15949	9985	5964
May-2016	3	2691	4113369	748	475	273	6512	3811	2701
Jun-2016	3	23	41272	743	474	269	6483	3782	2701
<b>2016-17 Jul-Mar</b>	<b>4</b>	<b>15733</b>	<b>405795</b>	<b>556</b>	<b>364</b>	<b>192</b>	<b>5276</b>	<b>3351</b>	<b>1925</b>
Jul-2016	3	741	38853	742	473	269	6479	3779	2700
Aug-2016	4	1792	51735	788	513	275	6480	3781	2699
Sep-2016	4	2311	51478	788	513	275	6474	3778	2696
Oct-2016	4	2329	52308	788	513	275	6463	3763	2700
Nov-2016	4	2377	52818	788	513	275	12082	9387	2695
Dec-2016	4	2325	61883	788	513	275	6476	3780	2696
Jan-16	3	832	31130	108	80	28	1020	626	394
Feb-2017	3	1555	31130	108	80	28	1020	626	394
Mar-2017	3	1471	34460	108	80	28	986	635	351

## PRODUCTION AND EMPLOYMENT IN COTTON TEXTILE INDUSTRY IN KHYBER PAKHTUNKHWA

Annexure-V

Year/ Month	No. of Reporting Unit	Production		Value in (Rs.000)		Employment (Nos)			Salaries/Wages Paid (Rs. in 000)		
		Cotton Cloth (000 Mtr)	Cotton Yarn (M.T)	Cotton Cloth	Cotton Yarn	Total	Produ- ction	Non- Produ- ction	Total	Produ- ction	Non- Production
2000-01	9	2562	60462	44730	6727561	0	0	0	0	0	0
2001-02	7	3560	57138	32861	6553813	0	0	0	0	0	0
2002-03	8	6557	59386	60438	6959710	3747	2792	955	4344	2882	1462
2003-04	9	7823	69317	134418	8327030	8950	6630	2320	11796	7760	4036
2004-05	15	17674	86620	300364	10316963	10724	8253	2471	22293	15262	7031
2005-06	15	14067	106584	141515	13242872	11705	9131	2574	33648	25177	8471
2006-07	12	3510	96697	29305	12003673	13880	11068	2812	51091	39325	11766
2007-08	14	6931	89618	24502	11870298	11884	9367	2517	34820	26062	8758
2008-09	11	3290	88696	67632	12181160	10662	7781	2781	25323	21490	3833
2009-10	14	2824	96757	100692	19029564	9662	7626	2036	20444	16039	4405
2010-11	12	1974	89377	190300	28316120	8200	6436	1764	18637	14220	4417
2011-12	14	11351	86109	168135	25091312	8324	6785	1539	17702	16018	1684
2012-13	19	9842	110848	134772	30404249	10042	8377	1665	16161	14590	1571
2013-14	10	3613	107734	761347	30980022	7836	6442	1394	21550	19662	1888
2014-15	9	2436	107145	200868	28491116	7959	6543	1416	41528	36846	4682
<b>2015-16</b>	<b>9</b>	<b>2436</b>	<b>85291</b>	<b>200868</b>	<b>16932060</b>	<b>7817</b>	<b>6497</b>	<b>1320</b>	<b>28529</b>	<b>21804</b>	<b>6725</b>
Jul-Mar	6	1827	63327	150651	12162857	7740	6419	1321	31584	23452	8132
Jul-2015	7	203	7836	16739	2125989	8115	6650	1465	25740	19630	6110
Aug-2015	6	203	7728	16739	2002704	6616	5220	1396	26860	19340	7520
Sep-2015	5	203	6737	16739	2135037	7488	6183	1305	36737	26369	10368
Oct-2015	5	203	6889	16739	2105146	7794	6499	1295	36738	26368	10370
Nov-2015	5	203	6666	16739	699093	7797	6505	1292	36725	26343	10382
Dec-2015	5	203	6643	16739	690235	7798	6506	1292	36712	26348	10364
Jan-2016	7	203	7418	16739	687415	8527	7183	1344	46150	35129	11021
Feb-2016	7	203	6588	16739	1108388	8390	7164	1226	19253	15743	3510
Mar-2016	6	203	6822	16739	608850	7134	5859	1275	19338	15795	3543
Apr-2016	6	203	6780	16739	610735	7129	5867	1262	19156	15561	3595
May-2016	7	203	7858	16739	2238665	8510	7158	1352	19018	17011	2007
Jun-2016	7	203	7326	16739	1919803	8503	7166	1337	19922	18007	1915
<b>2016-17</b>	<b>7</b>	<b>1827</b>	<b>62239</b>	<b>150651</b>	<b>16098250</b>	<b>8466</b>	<b>7137</b>	<b>1329</b>	<b>21102</b>	<b>18674</b>	<b>2428</b>
Jul-Mar											
Jul-2016	7	203	7573	16739	2086118	8499	7163	1336	19860	17893	1967
Aug-2016	7	203	7949	16739	2142320	8493	7157	1336	20146	18116	2030
Sep-2016	7	203	7669	16739	1751574	8463	7135	1328	19754	17808	1946
Oct-2016	7	203	6277	16739	1484214	8465	7148	1317	22150	19483	2667
Nov-2016	7	203	6395	16739	1769271	8462	7136	1326	22113	19433	2680
Dec-2016	7	203	6603	16739	1718427	8453	7123	1330	22088	19450	2638
Jan-2017	7	203	6602	16739	1717362	8453	7123	1330	22128	19482	2646
Feb-2017	7	203	6554	16739	1701376	8453	7123	1330	22175	19532	2643
Mar-2017	7	203	6617	16739	1727588	8453	7123	1330	19505	16868	2637

## PRODUCTION AND EMPLOYMENT IN ELECTRIC BULBS INDUSTRY IN KHYBER PAKHTUNKHWA

Annexure-VI

Year/ Month	No. of Reporting Unit	Production		Value (Rs. in 000)		Employment (Nos)			Salaries/Wages Paid (Rs. in 000)		
		Electric Bulb (000 Nos)	Electric Tubes (000 Mtr)	Electric Bulb	Electric Tubes	Total	Produ- ction	Non- Production	Total	Produ- ction	Non- Production
2000-01	2	44819	0	0	0	277	248	29	0	0	0
2001-02	2	43058	0	0	0	291	265	26	0	0	0
2002-03	2	51382	0	0	0	328	297	31	0	0	0
2003-04	2	54674	4227	116391	116391	572	522	50	0	0	0
2004-05	4	66700	6123	164112	164112	349	324	25	227	198	29
2005-06	3	63010	5120	116354	116354	539	503	36	318	278	40
2006-07	3	57326	5345	197844	197844	253	232	21	382	317	65
2007-08	3	50540	4286	158286	158286	435	381	54	772	612	160
2008-09	3	48742	2534	252	252	293	252	41	707	527	180
2009-10	3	48825	2914	117692	117692	95	84	11	188	137	51
2010-11	4	43484	1180	68439	68439	252	236	16	0	0	0
2011-12	4	40296	1266	76219	76219	272	255	17	0	0	0
2012-13	3	44204	1093	131278	131278	260	242	18	0	0	0
2013-14	2	40643	0	0	0	248	231	17	0	0	0
2014-15	2	32065	14	0	0	250	237	13	0	0	0
<b>2015-16</b>	<b>2</b>	<b>43965</b>	<b>0</b>	<b>0</b>	<b>0</b>	<b>255</b>	<b>242</b>	<b>13</b>	<b>0</b>	<b>0</b>	<b>0</b>
Jul-Mar	2	25871		359654		242	230	12	0	0	0
Jul-2015	2	2083	0	21674	0	242	230	12	0	0	0
Aug-2015	2	2283	0	203870	0	240	229	11	0	0	0
Sep-2015	2	2173	0	22660	0	242	230	12	0	0	0
Oct-2015	2	2173	0	22660	0	242	230	12	0	0	0
Nov-2015	2	2173	0	22660	0	242	230	12	0	0	0
Dec-2015	2	3995	0	7950	0	242	230	12	0	0	0
Jan-2016	2	4042	0	11243	0	246	231	15	0	0	0
Feb-2016	2	3708	0	11648	0	241	229	12	0	0	0
Mar-2016	2	3241	0	35289	0	241	229	12	0	0	0
Apr-2016	2	5018	0	56625	0	298	281	17	0	0	0
May-2016	2	6502	0	73675	0	298	281	17	0	0	0
Jun-2016	2	6574	0	74134	0	291	275	16	0	0	0
<b>2016-17</b>	<b>1</b>	<b>32862</b>		<b>195671</b>	<b>150</b>	<b>67</b>	<b>65</b>	<b>3</b>	<b>0</b>	<b>0</b>	<b>0</b>
Jul-Mar	1	32862		195671	150	67	65	3	0	0	0
Jul-2016	2	6574	0	74134	0	291	275	16	0	0	0
Aug-2016	1	3282	0	0	0	0	0	0	0	0	0
Sep-2016	1	2991	0	0	0	0	0	0	0	0	0
Oct-2016	1	3081	0	0	0	0	0	0	0	0	0
Nov-2016	1	2564	0	0	0	0	0	0	0	0	0
Dec-2016	1	3460	0	0	0	0	0	0	0	0	0
Jan-2017	1	3953	0	43487	150	5	5	0	0	0	0
Feb-2017	1	3551	0	39067	0	155	149	6	0	0	0
Mar-2017	1	3406	0	38983	0	156	153	3	0	0	0

### PRODUCTION AND EMPLOYMENT IN FERTILIZER INDUSTRY IN KHYBER PAKHTUNKHWA

Annexure-VII

Year/ Month	No. of Reporting Unit	Production in M.T.	Value (Rs. in 000)	Employment (Nos)			Salaries/Wages Paid (Rs.000)		
				Total	Produ- ction	Non- Production	Total	Produ- ction	Non- Production
2000-01	1	113340	539664	250	161	89	0	0	0
2001-02	1	113340	539664	250	161	89	0	0	0
2002-03	1	80007	411483	144	48	96	0	0	0
2003-04	1	92905	528136	180	44	136	0	0	0
2004-05	1	87340	539234	233	51	182	0	0	0
2005-06	1	85455	1072436	256	53	203	0	0	0
2006-07	1	81930	590517	252	47	205	0	0	0
2007-08	1	92380	590625	239	40	199	0	0	0
2008-09	1	91821	1346428	203	100	103	2635	1776	859
2009-10	1	101225	1321419	267	205	62	6387	4688	1699
2010-11	1	94263	1423949	269	210	59	6655	5207	1448
2011-12	1	68191	1519836	265	203	62	6875	5254	1621
2012-13	1	57822	1236272	240	185	55	6804	5251	1553
2013-14	1	75624	1526751	253	197	56	7981	6295	1686
2014-15	1	51382	963349	240	188	52	8192	6480	1712
<b>2015-16</b>	<b>1</b>	<b>46237</b>	<b>760744</b>	<b>213</b>	<b>165</b>	<b>48</b>	<b>7634</b>	<b>5969</b>	<b>1665</b>
Jul-Mar	1	27959	462298	218	170	48	7637	5964	1673
Jul-2015	1	1580	30832	234	183	51	7565	5887	1678
Aug-2015	1	1580	30832	234	183	51	7565	5887	1678
Sep-2015	1	1580	30832	234	183	51	7565	5887	1678
Oct-2015	1	1580	30832	234	183	51	7565	5887	1678
Nov-2015	1	4863	82671	221	173	48	7932	6217	1715
Dec-2015	1	1416	24072	207	161	46	7799	6119	1680
Jan-2016	1	2928	49776	204	158	46	7691	6036	1655
Feb-2016	1	9504	132675	195	149	46	7364	5724	1640
Mar-2016	1	2928	49776	204	158	46	7691	6036	1655
Apr-2016	1	2928	49776	204	158	46	7691	6036	1655
May-2016	1	7675	124335	194	148	46	7589	5957	1632
Jun-2016	1	7675	124335	194	148	46	7589	5957	1632
<b>2016-17 Jul-Mar</b>	<b>1</b>	<b>47120</b>	<b>2020938</b>	<b>191</b>	<b>145</b>	<b>46</b>	<b>7835</b>	<b>6083</b>	<b>1752</b>
Jul-2016	1	4823	79097	192	145	47	7849	6182	1667
Aug-2016	1	5636	92430	191	144	47	7590	5932	1658
Sep-2016	1	4032	63706	188	142	46	8055	6290	1765
Oct-2016	1	8316	1392174	187	141	46	8090	6289	1801
Nov-2016	1	4032	63706	188	142	46	8055	6290	1765
Dec-2016	1	5270	86428	193	148	45	7928	6194	1734
Jan-2017	1	5270	86428	193	148	45	7928	6194	1734
Feb-2017	1	5270	86428	193	148	45	7928	6194	1734
Mar-2017	1	4471	70541	195	150	45	7090	5179	1911

## PRODUCTION AND EMPLOYMENT IN MATCH INDUSTRY IN KHYBER PAKHTUNKHWA

Annexure-VIII

Year/ Month	No. of Reporting Unit	Production in M.Nos.	Value (Rs. in 000)	Employment (Nos)			Salaries/Wages Paid (Rs. in 000)		
				Total	Production	Non- Production	Total	Production	Non- Production
2001-02	5	945	234925	235	211	24	413	350	63
2002-03	3	1123	250099	256	225	31	719	598	121
2003-04	7	2591	696433	548	456	92	479	342	137
2004-05	13	2630	697400	641	536	105	849	628	221
2005-06	10	4036	1403202	1709	1486	223	3793	2942	851
2006-07	15	5168	1721495	1041	850	191	2944	2353	591
2007-08	16	5535	1581460	908	736	172	2728	2152	576
2008-09	14	4601	1504411	1917	1592	325	7994	6254	1740
2009-10	16	4494	1433559	2231	1820	411	7652	5916	1736
2010-11	17	4359	1759573	1944	1669	275	8797	7023	1774
2011-12	15	3984	1488998	2536	2260	276	15171	13195	1976
2012-13	16	4757	2188252	1647	1450	197	15918	13738	2180
2013-14	15	4580	2151827	1560	1359	201	11139	8390	2749
2014-15	14	3766	2284249	1475	1300	175	13714	10983	2731
<b>2015-16</b>	<b>13</b>	<b>2864</b>	<b>1098529</b>	<b>1338</b>	<b>1184</b>	<b>154</b>	<b>17131</b>	<b>13550</b>	<b>3581</b>
Jul-Mar	12	2228	843907	1380	1218	162	17793	14072	3721
Jul-2015	11	264	146707	1321	1160	161	15917	13085	2832
Aug-2015	11	258	132717	1343	1195	148	17245	14105	3140
Sep-2015	13	257	88770	1534	1319	215	21551	15643	5908
Oct-2015	12	249	86277	1386	1228	158	18282	14169	4113
Nov-2015	12	240	83709	1388	1230	158	17812	14246	3566
Dec-2015	12	260	62808	1387	1228	159	17706	14145	3561
Jan-2016	12	256	87843	1389	1231	158	17785	14241	3544
Feb-2016	12	236	81156	1389	1231	158	17790	14258	3532
Mar-2016	11	208	73920	1284	1143	141	16042	12753	3289
Apr-2016	10	206	114143	1228	1096	132	15247	12090	3157
May-2016	10	235	78955	1226	1094	132	15102	11944	3158
Jun-2016	9	195	61524	1177	1049	128	15087	11915	3172
<b>2016-17 Jul-Mar</b>	<b>8</b>	<b>1763</b>	<b>676254</b>	<b>1138</b>	<b>1025</b>	<b>113</b>	<b>14834</b>	<b>11744</b>	<b>3091</b>
Jul-2016	9	201	65057	1176	1048	128	11709	8626	3083
Aug-2016	9	231	86348	1174	1046	128	15355	12176	3179
Sep-2016	9	214	78048	1169	1041	128	15340	12151	3189
Oct-2016	9	230	84879	1173	1045	128	14695	11492	3203
Nov-2016	8	194	70503	1114	995	119	14460	11417	3043
Dec-2016	8	201	76112	1119	1000	119	14444	11393	3051
Jan-2017	8	164	77152	1135	1044	91	16632	13461	3171
Feb-2017	7	160	69174	1096	1012	84	15935	12933	3002
Mar-2017	7	168	68981	1090	997	93	14940	12046	2894

**PRODUCTION AND EMPLOYMENT IN PAPER & PAPER BOARD INDUSTRY IN KHYBER PAKHTUNKHWA**

Annexure-IX

Year/ Month	No. of Reporting Unit	Production (MT)		Value (Rs. in 000)		Employment (Nos)			Salaries/Wages Paid (Rs. in 000)		
		Board	Paper	Board	Paper	Total	Production	Non-Production	Total	Production	Non-Production
2000-01	1	0	7245	0	275220	180	127	53	0	0	0
2001-02	1	0	6320	0	231082	179	127	52	0	0	0
2002-03	2	7493	9198	96815	420795	236	172	64	0	0	0
2003-04	2	11877	8039	134779	338053	233	166	67	0	0	0
2004-05	3	5320	8254	63786	397793	311	248	63	30	7	23
2005-06	2	4722	6859	63048	224398	208	148	60	0	0	0
2006-07	2	4358	5842	127913	177988	215	154	61	0	0	0
2007-08	2	3796	5659	73416	233681	227	163	64	0	0	0
2008-09	2	4318	5375	88025	256169	246	181	65	159	135	24
2009-10	3	11593	1805	193560	88916	134	95	39	422	272	150
2010-11	4	11373	1674	241112	66787	209	148	61	976	637	339
2011-12	4	4129	7965	130201	199988	230	178	52	1206	933	273
2012-13	4	6359	7154	113379	182042	191	138	53	1130	781	349
2013-14	4	8062	6806	264426	201266	172	135	37	1685	1285	400
2014-15	3	7891	7388	304189	241974	148	109	39	1728	1333	395
<b>2015-16</b>	<b>3</b>	<b>6911</b>	<b>7183</b>	<b>390697</b>	<b>236187</b>	<b>198</b>	<b>118</b>	<b>80</b>	<b>1515</b>	<b>1055</b>	<b>460</b>
Jul-Mar	2	4954	5287	323163	172241	226	128	98	1440	1045	395
Jul-2015	3	534	500	23523	16487	293	265	28	1701	1345	356
Aug-2015	3	534	500	23523	16487	293	265	28	1701	1345	356
Sep-2015	2	466	571	153366	19528	114	92	22	1627	1208	419
Oct-2015	2	563	571	19341	19528	119	97	22	1664	1245	419
Nov-2015	2	563	571	19341	19528	119	97	22	1664	1245	419
Dec-2015	2	559	640	20771	20500	274	84	190	1542	1295	247
Jan-2016	2	590	644	21248	20061	274	84	190	1541	872	669
Feb-2016	2	551	644	21025	20061	274	84	190	1522	853	669
Mar-2016	2	594	646	21025	20061	274	84	190	0	0	0
Apr-2016	2	556	616	20866	20908	114	82	32	1729	1084	645
May-2016	2	703	640	23722	21519	114	92	22	1741	1082	659
Jun-2016	2	698	640	22946	21519	114	92	22	1743	1084	659
<b>2016-17 Jul-Mar</b>	<b>2</b>	<b>4435</b>	<b>5603</b>	<b>143750</b>	<b>168545</b>	<b>137</b>	<b>108</b>	<b>29</b>	<b>2108</b>	<b>1492</b>	<b>616</b>
Jul-2016	2	500	698	19876	15805	348	327	21	4868	4485	383
Aug-2016	2	594	660	19698	20986	112	81	31	1708	1072	636
Sep-2016	2	452	462	15363	15192	110	80	30	1650	1061	599
Oct-2016	2	473	622	14528	19427	112	82	30	1795	1151	644
Nov-2016	2	495	622	14857	19427	110	80	30	1790	1133	657
Dec-2016	2	489	622	14857	19427	110	80	30	1790	1133	657
Jan-2017	2	490	622	14857	19427	110	80	30	1790	1133	657
Feb-2017	2	468	622	14857	19427	110	80	30	1790	1133	657
Mar-2017	2	474	673	14857	19427	110	80	30	1790	1133	657



## PRODUCTION AND EMPLOYMENT IN PHARMACEUTICALS INDUSTRY IN KHYBER PAKHTUNKHWA

Annexure-X

Year/ Month	No. of Report- ing Unit	Production						Value of Production in (Rs.000)						Employment (Nos)			Salaries/Wages Paid (Rs. in 000)		
		Capsules (000 Nos)	Galenical Tinctures/ Spirits (000 Ltr)	Injec- tions (000 Nos)	Liquids/ Syrups (000 Ltr)	Ointmnts (Kg)	Tablets (000 Nos)	Capsule	Galenical Tinctures/ Spirits	Injec- tion	Liquids/ Syrups	Ointmnt	Tablet	Total	Productio n	Non- Productio n	Total	Production	Non- Production
2005-06	9	7737625	39	1784	1263011	46320	143399153	322220	4578360	95307	93226985	23073270	207119889	587	327	260	1787784	1144371	643413
2006-07	10	7265950	5	1724	348573	24851	152996146	12456400	871856	83188	98071458	27801048	188262714	602	328	274	2178015	1455593	722422
2007-08	10	8671607	0	349012	1474324	23307	44606938	6634356	0	149407	20106875	36069	7613553	726	433	293	3150358	2174071	976287
2008-09	13	8678479	0	228418	1013189	1240	30076596	3518090	0	321895	13579801	46073	6656003	749	446	303	2653941	2026674	627267
2009-10	10	14381973	0	300585	1615027	39822	79504742	19076605	1960	770009	53943188	10700353	160169922	182	104	78	440072	312345	127727
2010-11	72	270278	469	6616	342462	36837	1094030	4531262	0	131968	6029438	60286	9790828	1530	957	573	819078	578740	240338
2011-12	72	226415	12	887137	41382	37576	403061	1178211	0	10201367	428094	28540	2817299	1008	654	354	153495	99537	53958
2012-13	50	442982	0	10074	69701	110014	3716145	1082534	8533	182430	252426	40727	4440743	1145	789	356	13203	7303	5900
2013-14	35	112429	0	8146	60319	49725	442031	890889	0	3092183	162411	102646	7334257	1098	784	314	15920	10361	5559
2014-15	39	168308	0	12377	75318	65285	513861	715951	0	647089	292956	132438	3493431	1593	1040	553	23472	13282	10190
<b>2015-16</b>	<b>35</b>	<b>186898</b>	<b>0</b>	<b>51590</b>	<b>72010</b>	<b>50295</b>	<b>436595</b>	<b>651817</b>	<b>0</b>	<b>417366</b>	<b>401753</b>	<b>115469</b>	<b>1528725</b>	<b>1236</b>	<b>841</b>	<b>395</b>	<b>20482</b>	<b>13840</b>	<b>6642</b>
Jul-Mar	26	149057		48180	66101	40436	370438	536290	0	280717	332484	100478	1341011	1345	925	420	23799	16200	7599
Jul-2015	34	13842	0	1019	7905	4114	53888	63986	0	33324	24950	8803	57167	1580	1093	487	27245	18006	9239
Aug-2015	31	18506	0	8934	8958	3765	39562	65186	0	35495	25622	10806	60775	1473	1000	473	26649	17651	8998
Sep-2015	31	16153	0	8967	8991	2728	36405	48551	0	35792	35457	10715	142540	1471	1004	467	33763	24687	9076
Oct-2015	31	18807	0	15202	9061	1233	43777	27480	0	35903	39402	5407	135393	1466	996	470	26385	17068	9317
Nov-2015	31	21060	0	9005	8921	1416	53354	74513	0	36564	38363	6467	164197	1491	1020	471	27160	17756	9404
Dec-2015	30	19758	0	4243	8951	5787	47385	64378	0	35431	34580	14980	187927	1474	1006	468	27174	17789	9385
Jan-2016	13	11158	0	36	4089	9542	24128	59011	0	1156	40967	15757	118408	800	555	245	14394	11122	3272
Feb-2016	13	12257	0	38	4086	7581	32235	55583	0	1096	48425	15522	122955	814	566	248	14748	11448	3300
Mar-2016	23	17516	0	736	5139	4270	39704	77602	0	65956	44718	12021	351649	1534	1082	452	16673	10275	6398
Apr-2016	23	17831	0	927	5123	9484	46356	69268	0	66397	30494	14798	139216	1397	986	411	15722	10868	4854
May-2016	13	6099	0	1494	613	375	8978	17301	0	66604	19359	193	24060	728	414	314	7334	4375	2959
Jun-2016	11	13911	0	989	173	0	10823	28958	0	3648	19416	0	24438	595	366	229	8526	5030	3496
<b>2016-17 Jul-Mar</b>	<b>11</b>	<b>63239</b>		<b>9230</b>	<b>2684</b>	<b>4600</b>	<b>65731</b>	<b>91011</b>	<b>0</b>	<b>45119</b>	<b>112797</b>	<b>2300</b>	<b>197295</b>	<b>418</b>	<b>277</b>	<b>141</b>	<b>5823</b>	<b>3518</b>	<b>2306</b>
Jul-2016	8	6258	0	837	312	600	6052	11874	0	2166	21169	300	15324	432	258	174	4928	2848	2080
Aug-2016	14	8193	0	963	301	500	10387	14759	0	4193	20961	250	73252	653	422	231	11152	5465	5687
Sep-2016	12	6398	0	909	311	500	7517	12192	0	2270	20730	250	17678	499	297	202	5824	3403	2421
Oct-2016	13	10349	0	1517	345	500	9768	14726	0	6225	21096	250	19819	516	317	199	5981	3638	2343
Nov-2016	13	10841	0	1645	433	500	12641	17180	0	7553	18485	250	26333	599	376	223	10789	5581	5208
Dec-2016	9	4938	0	845	284	500	5149	4206	0	6569	2896	250	9098	207	164	43	2614	2100	514
Jan-2017	10	5404	0	838	231	500	4689	5368	0	5381	2510	250	11816	286	220	66	3718	2882	836
Feb-2017	10	5374	0	838	237	500	4689	5338	0	5381	2450	250	11909	283	219	64	3687	2862	825
Mar-2017	10	5484	0	838	230	500	4839	5368	0	5381	2500	250	12066	286	220	66	3718	2882	836

## PRODUCTION AND EMPLOYMENT IN SUGAR INDUSTRY IN KHYBER PAKHTUNKHWA

Annexure-XI

Year/ Month	No. of Report ing Unit	Production in (M.Ton)	Value (Rs. in 000)	Employment (Nos)			Salaries/Wages Paid (Rs. in 000)		
				Total	Production	Non- Production	Total	Production	Non- Production
2000-01	4	53072	276000	1495	724	771	3186	2281	905
2001-02	3	129357	12870	1653	917	736	2738	1988	750
2002-03	4	110764	557310	1945	941	1004	3267	2503	764
2003-04	4	199034	1191019	1849	988	861	4885	3839	1046
2004-05	2	104834	856026	2013	947	1066	4870	2778	2092
2005-06	3	94545	250058	1271	801	470	2993	1988	1005
2006-07	3	87243	1100069	1383	720	663	4447	2784	1663
2007-08	4	66772	312176	1242	786	456	7050	5485	1565
2008-09	3	32937	525374	1170	679	491	7172	4867	2305
2009-10	4	9140	362177	561	313	248	3897	2465	1432
2010-11	6	180943	983216	911	614	297	3983	2811	1172
2011-12	6	203410	391623	2370	1551	819	9070	6320	2750
2012-13	3	62820	501984	1061	725	336	14187	9641	4546
2013-14	5	179051	95608	1517	962	555	12915	8509	4406
2014-15	3	118350	0	2032	1290	742	11598	7411	4187
<b>2015-16</b>	<b>4</b>	<b>267349</b>	<b>0</b>	<b>2329</b>	<b>1495</b>	<b>834</b>	<b>17891</b>	<b>11129</b>	<b>6762</b>
Jul-Mar	4	236318	0	2096	1329	767	17047	10481	6566
Jul-2015	2	0	0	1057	724	333	12200	8296	3904
Aug-2015	2	0	0	1057	724	333	12200	8296	3904
Sep-2015	2	0	0	768	411	357	9057	4991	4066
Oct-2015	3	0	0	1138	645	493	16333	9548	6785
Nov-2015	3	4310	0	1264	717	547	19710	11874	7836
Dec-2015	5	46220	0	3452	2205	1247	20656	12627	8029
Jan-2016	5	80815	0	3465	2209	1256	21041	12883	8158
Feb-2016	5	66410	0	3459	2203	1256	21116	12909	8207
Mar-2016	5	38563	0	3198	2121	1077	21116	12909	8207
Apr-2016	5	31031	0	3202	2122	1080	21118	12880	8238
May-2016	2	0	0	2941	1930	1011	20022	13126	6896
Jun-2016	2	0	0	2942	1929	1013	20126	13210	6916
<b>2016-17 Jul-Mar</b>	<b>2</b>	<b>2049669</b>	<b>0</b>	<b>2688</b>	<b>1766</b>	<b>922</b>	<b>34109</b>	<b>20998</b>	<b>13110</b>
Jul-2016	2	0	0	2942	1931	1011	20090	13201	6889
Aug-2016	2	0	0	2943	1933	1010	20102	13258	6844
Sep-2016	2	0	0	2939	1932	1007	19984	13218	6766
Oct-2016	3	0	0	3807	2473	1334	36144	22528	13616
Nov-2016	3	4020	0	2712	1763	949	40106	22757	17349
Dec-2016	3	384010	0	2755	1805	950	39561	16963	22598
Jan-2017	2	477590	0	1841	1209	632	37803	26233	11570
Feb-2017	2	575925	0	1834	1205	629	38600	27299	11301
Mar-2017	3	608124	0	2416	1641	775	54590	33529	21061

## PRODUCTION AND EMPLOYMENT IN VEGETABLE GHEE INDUSTRY IN KHYBER PAKHTUNKHWA

Annexure-XII

Year/ Month	No. of Reporting Unit	Production in M.Ton		Value in (Rs.000)		Employment (Nos)			Salaries/Wages Paid (Rs.000)		
		Cooking Oil	Ghee	Cooking Oil	Ghee	Total	Production	Non- Production	Total	Production	Non- Production
2000-01	6	1999	187487	60236	5601981	435	286	149	541	383	158
2001-02	6	9172	187148	281364	4566407	636	458	178	1500	996	504
2002-03	9	9641	200537	376860	7075981	768	510	258	2234	1408	826
2003-04	11	12832	219041	348544	7691288	834	574	260	1346	803	543
2004-05	12	30891	279477	785893	10275069	1185	824	361	2742	1675	1067
2005-06	12	32348	358908	1404160	14933715	1244	822	422	3848	2401	1447
2006-07	16	27744	338729	1239675	17568118	1242	864	378	4471	2685	1786
2007-08	20	31580	338872	1274201	21077720	865	597	268	4226	2324	1902
2008-09	17	37043	311226	2217129	26340529	1194	894	300	6065	4371	1694
2009-10	13	24994	236154	1642280	20094776	1057	717	340	5450	3296	2154
2010-11	17	29730	252036	2316211	26867917	948	695	253	6230	4119	2111
2011-12	25	40840	283911	4949648	37218122	1010	751	259	6701	4453	2248
2012-13	18	45350	263526	6507833	36114625	1068	811	257	7721	5201	2520
2013-14	15	60959	246177	7608140	32441348	1055	826	229	9562	6782	2780
2014-15	14	52809	232061	6388015	27216805	1059	821	238	10520	7483	3037
<b>2015-16</b>	<b>15</b>	<b>48539</b>	<b>194963</b>	<b>5627735</b>	<b>20779630</b>	<b>1047</b>	<b>763</b>	<b>284</b>	<b>9812</b>	<b>6655</b>	<b>3157</b>
Jul-Mar	12	39198	142972	4238689	14686534	1034	760	274	9044	6009	3035
Jul-2015	14	4537	16300	348782	1629421	1100	796	304	8972	5609	3363
Aug-2015	14	4298	17789	302868	1707073	1102	799	303	9189	5822	3367
Sep-2015	11	3974	12922	454767	1433251	992	717	275	8617	5367	3250
Oct-2015	12	7983	16807	964722	1951474	1015	794	221	6487	3837	2650
Nov-2015	12	6964	16757	858266	1369558	989	776	213	6194	3655	2539
Dec-2015	12	2138	15559	220815	1526758	990	715	275	8737	6177	2560
Jan-2016	12	2658	13821	311460	1402989	985	712	273	10914	7802	3112
Feb-2016	11	2809	15916	287837	1776667	1036	749	287	9467	6716	2751
Mar-2016	13	3837	17101	489172	1889343	1089	778	311	12818	9092	3726
Apr-2016	13	2853	16917	477614	1882242	1055	750	305	12849	9185	3664
May-2016	14	3570	18029	507996	1932102	1101	782	319	12717	9003	3714
Jun-2016	14	2918	17045	403436	2278752	1103	786	317	10783	7593	3190
<b>2016-17 Jul-Mar</b>	<b>13</b>	<b>36143</b>	<b>155819</b>	<b>5034704</b>	<b>15942448</b>	<b>1040</b>	<b>739</b>	<b>301</b>	<b>12305</b>	<b>8670</b>	<b>3635</b>
Jul-2016	14	2603	18478	378686	2073054	1102	785	317	10632	7507	3125
Aug-2016	15	3470	16217	483318	1752358	1105	784	321	10730	7560	3170
Sep-2016	14	3856	17370	475076	1629575	1101	779	322	12669	8928	3741
Oct-2016	15	3312	16960	397274	1552356	1093	774	319	13140	9361	3779
Nov-2016	14	4517	20916	497167	2060195	1095	775	320	12921	9176	3745
Dec-2016	14	4646	20948	511150	2067337	1094	774	320	12924	9172	3752
Jan-2017	14	4900	19334	572959	1857072	1068	756	312	14079	9671	4408
Feb-2017	9	4226	13027	1195408	1512246	828	597	231	11759	8103	3656
Mar-2017	9	4613	12569	523666	1438255	870	623	247	11893	8552	3341

## PRODUCTION AND EMPLOYMENT IN WOOLEN INDUSTRY IN KHYBER PAKHTUNKHWA

Annexure-XIII

Year/ Month	No. of Report ing Unit	Production		Value in (Rs.000)		Employment (Nos)			Salaries/Wages Paid (Rs.000)		
		Blanket (Nos)	Fibre (000 Mtr)	Blanket	Fibre	Total	Produ- ction	Non- Production	Total	Produc- tion	Non- Production
2000-01	2	51732	1485	18716	123098	5997	4591	1406	5442	4391	1051
2001-02	2	66995	1497	23986	131848	4866	3828	1038	5847	4586	1261
2002-03	2	63991	1331	23012	114070	5604	4268	1336	5538	3967	1571
2003-04	1	70864	1306	26101	114698	512	426	86	0	0	0
2004-05	2	98361	1253	33583	147697	850	634	216	2453	1538	915
2005-06	2	102284	1198	31525	151130	928	678	250	4615	3735	880
2006-07	2	64872	1317	20125	178683	1322	1056	266	5375	4277	1098
2007-08	2	89147	1605	21496	223850	537	432	105	2777	2413	364
2008-09	2	65599	1435	33871	212688	812	639	173	4751	3623	1128
2009-10	3	80365	131680	25116	306695	848	690	158	3838	3326	512
2010-11	2	55575	1638	17024	290951	462	395	67	3671	3339	332
2011-12	2	85567	1455	47694	383449	459	388	71	4803	3917	886
2012-13	1	62469	1574	34248	473542	485	405	80	4116	3229	887
2013-14	1	57894	1711	89797	459860	648	540	108	6308	5620	688
<b>2014-15</b>	<b>4</b>	<b>85204</b>	<b>4504</b>	<b>63687</b>	<b>465044</b>	<b>683</b>	<b>598</b>	<b>85</b>	<b>7252</b>	<b>6553</b>	<b>699</b>
2015-16	1	50119	1647	37395	488390	634	529	105	6469	5356	1113
Jul-Mar	1	34985	1337	26088	382794	623	519	104	6443	5315	1128
Jul-2015	1	2378	82	1771	28092	669	560	109	7198	5942	1256
Aug-2015	1	4587	128	3417	43793	613	503	110	5921	4930	991
Sep-2015	1	2466	136	1837	46298	604	501	103	6146	5039	1107
Oct-2015	1	2466	136	1837	46298	604	501	103	6146	5039	1107
Nov-2015	1	4952	99	3689	33796	609	503	106	6405	5260	1145
Dec-2015	1	4963	148	3697	50493	595	498	97	5748	4730	1018
Jan-2016	1	4963	148	3697	50493	595	498	97	5748	4730	1018
Feb-2016	1	4910	340	3657	42769	624	509	115	8125	6683	1442
Mar-2016	1	3300	120	2486	40762	698	599	99	6547	5480	1067
Apr-2016	1	3300	120	2486	40762	698	599	99	6547	5480	1067
May-2016	1	5456	104	4064	35318	656	543	113	6547	5480	1067
<b>Jun-2016</b>	<b>1</b>	<b>6378</b>	<b>86</b>	<b>4757</b>	<b>29516</b>	<b>652</b>	<b>538</b>	<b>114</b>	<b>6547</b>	<b>5480</b>	<b>1067</b>
2016-17Jul-Mar	1	18747	1098	103543	299596	633	551.33333	81.666667	0	0	0
Jul-2016	1	804	95	905	33110	647	541	106	0	0	0
Aug-2016	1	1351	127	1521	44334	627	522	105	0	0	0
Sep-2016	1	1183	103	1332	36010	629	558	71	0	0	0
Oct-2016	1	3941	114	4438	39480	628	557	71	0	0	0
Nov-2016	1	4095	142	4610	49250	629	558	71	0	0	0
Dec-2016	1	1778	124	2002	43220	627	557	70	0	0	0
Jan-2017	1	1778	124	43220	2002	627	557	70	0	0	0
Feb-2017	1	1778	124	43220	2002	627	557	70	0	0	0
Mar-2017	1	2039	145	2295	50188	656	555	101	0	0	0

