

MONTHLY SURVEY OF INDUSTRIAL PRODUCTION & EMPLOYMENT IN KHYBER PAKHTUNKHWA



**BUREAU OF STATISTICS
PLANNING & DEVELOPMENT DEPARTMENT
GOVERNMENT OF KHYBER PAKHTUNKHWA**

www.kpbos.gov.pk

PREFACE

Bureau of Statistics has been publishing the Monthly Survey of Industrial Production and Employment Report on a regular basis since 1976 to provide important data on employment and production concerning Large Scale Manufacturing (LSM) industries in Khyber Pakhtunkhwa.

The survey report provides data for the month of **December 2016** pertaining to various categories of large scale manufacturing industries covering **63** industrial establishments. It highlights information on the General Index of Industrial Production with 2005-06 its base and provides comparison of the latest available monthly data with the previous month of the current year and the corresponding month of the last year along with year-wise and month-wise comparative data.

It is expected that the publication will best serve the diverse needs of data users and would be especially instrumental in quantitative analysis and informed decision-making.

We are extremely indebted to the managements of the industrial units, Industries Department and Directorate of Industries for supplying the required data for publication of this report well in time. The team efforts of the staff of Bureau of Statistics in producing this monthly publication are also highly appreciated.

The publication has also been made available on the official website of the Bureau of Statistics www.kpbos.gov.pk to provide easy access to data users.

It is our endeavour to continuously refine presentation of the data. We would, as always, welcome suggestions to improve future series of the report.

Bureau of Statistics
Planning & Development Department
Government of Khyber Pakhtunkhwa

DIRECTOR

May____, 2017

CONTENTS

Table No.	Title
	Explanatory Note
	Analytical Note on Industrial Production and Employment in Khyber Pakhtunkhwa December 2016.
1	Number of reporting units of selected items of regarding selected Large Scale Industries in Khyber Pakhtunkhwa during December 2016, November 2016 and December 2015.
2	Production of selected items regarding selected Large Scale Industries in Khyber Pakhtunkhwa during December 2016 & November 2016.
3	Production of selected items regarding selected Large Scale Industries in Khyber Pakhtunkhwa during December 2016 & December 2015.
4	Production of selected items regarding selected Large Scale Industries in Khyber Pakhtunkhwa during July-December 2016-17 & July-December 2015-16.
5	Total Employment in selected Large Scale Industries in Khyber Pakhtunkhwa during December 2016, November 2016 & December 2015.
6	Number of Production workers in selected Large Scale Industries in Khyber Pakhtunkhwa during December 2016, November 2016 & December 2015.
Annexure	
i.	Beverages Industry
ii.	Cement Industry
iii.	Ceramics Industry
iv.	Cigarettes Industry
v.	Cotton Textile Industry
vi.	Electric Bulb Industry
vii.	Fertilizer Industry
viii.	Matches Industry
ix.	Paper & Paper Board Industry
x.	Pharmaceutical
xi.	Sugar Industry
xii.	Vegetable Ghee Industry
xiii.	Woollen Textile Industry

Page No.
i - iii
1-3
4
5
6
7
8
9
10
11
12
13
14
15
16
17
18
19
20
21
22

EXPLANATORY NOTE

Introduction

The industrial sector is imperative for economic growth, employment creation, supply of basic necessities and building a competitive manufacturing economy. With its several linkages with other sectors of the economy the manufacturing sector is witnessing a gradual build up in terms of its share in GDP and value addition over the last years and its importance has increased significantly.

Reliable and current statistics are essential tools meant to facilitate the process of development especially through informed decisions in the spheres of plans and policies formulation, monitoring and evaluation and research.

The Monthly Survey of Industrial Production and Employment is a regular monthly publication of the Bureau of Statistics, Khyber Pakhtunkhwa. It was initiated in 1976 covering four industrial establishments namely Sugar, Tobacco, Cement and Paper and Paper Board. The coverage went on increasing and the current report covers 13 categories of Large Scale Manufacturing (LSM) industries.

The need for the Monthly Survey basically stemmed from the fact that the Census of Manufacturing Industries has a high time lag in availability of data. It is therefore conducted to bridge the information gap in intermittent period and to maintain a regular flow of data for routine application of data.

The Survey primarily aims at measuring the performance of industrial sector, updating existing data and providing evidence-based information on production and employment aspects of manufacturing sector to policymakers, planners and entrepreneurs and other data users for their respective uses in context of industrial development.

The report indicates information on the General Index of Industrial Production, which is a composite indicator that measures changes in the volume of production in a basket of industrial products during a given period with respect to the base year. The Index provided in this report used the Laspayer's Index.

For the purpose of this Survey Large Scale Manufacturing (LSM) is one which employs ten or more than ten workers. The employment data cover both regular and temporary workers.

Methodology

The questionnaire designed by Bureau of Statistics, Khyber Pakhtunkhwa is mailed to factory managers to provide required information on monthly basis. The set of information include production, value, number of production and non-production workers and their wages and salaries.

About 50-60 questionnaires are received through postal mail, fax and email, while for non-responding industrial units information are collected through personal visits by the officers/officials of the Bureau of Statistics.

Scope and Coverage

The Survey covers 13 types of Large Scale Manufacturing (LSM) industries comprising Beverages, Cement, Ceramics, Cigarettes, Cotton Textile, Electric Bulbs, Fertiliser, Matches, Paper and Paper Board, Pharmaceutical, Sugar, Vegetable Ghee and Woollen and 63 industrial units manufacturing 23 items in Khyber Pakhtunkhwa.

Editing

Upon the receipt of filled questionnaires from respondents information are examined and compared with previous data for accuracy and consistency. In case there is huge variation between the current and previous data, information are verified from concerned managers of the industrial units. Some of the information which cannot be collected due to non-response is estimated on the basis of last month averages.

Data Entry and Final Report

Bureau of Statistics has developed the MIS containing a module of Industrial Production and Employment. The unit-wise data for each category is entered into the system, which generates reports indicating variations in production and employment, Industrial Production Index and Relative Index. Final report is prepared with proper tabulations, graphs and analysis.

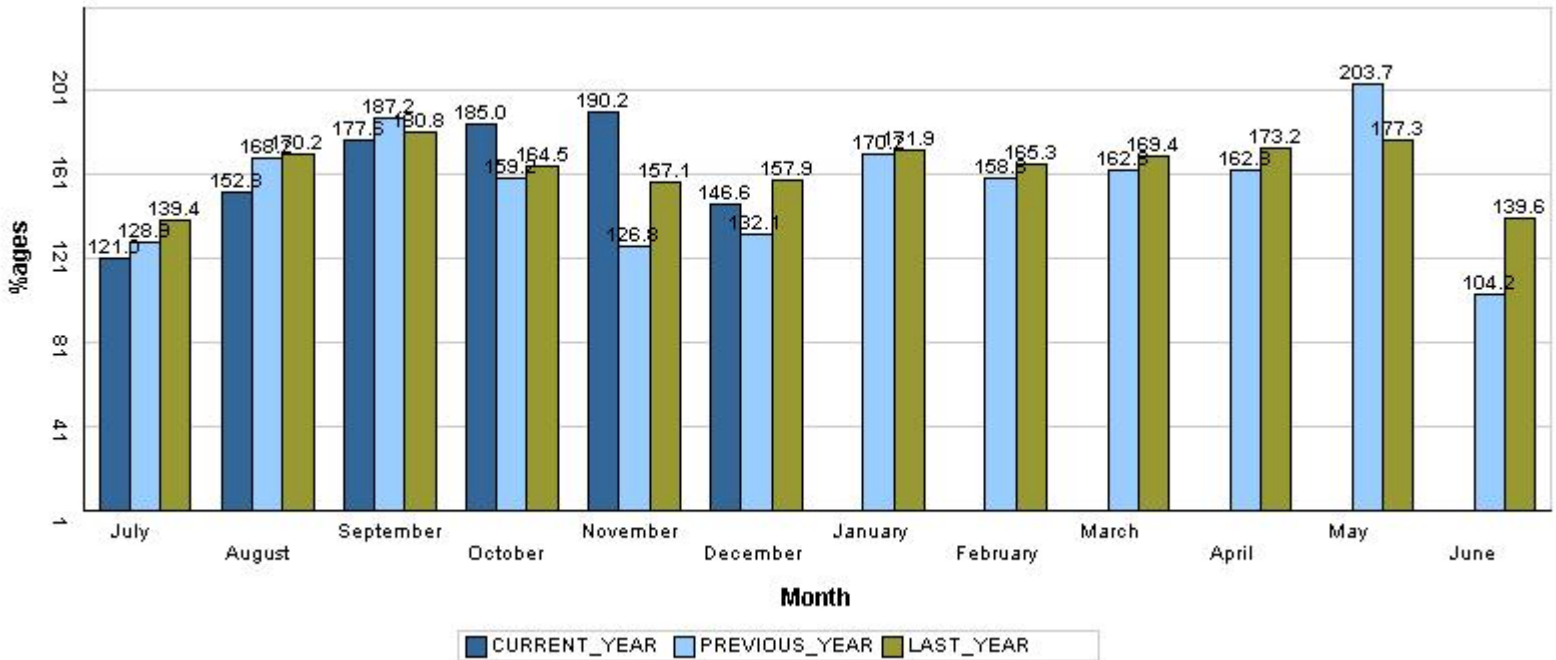
Dissemination

The report is disseminated to multiple data users through postal mail on monthly basis. It is also uploaded on the official web site of BOS to facilitate easy access. With an endeavour to refine future series of the report views from data users are always welcome and appreciated.

**INDEX OF INDUSTRIAL PRODUCTION IN THE KHYBER PAKHTUNKHWA
(BASE: 2005-06 = 100)**

Month	2013-14	2014-15	2015-16	2016-17
July	124.66	139.38	128.93	121.02
August	149.51	170.24	168.18	152.75
September	152.71	180.85	187.19	177.61
October	151.56	164.51	159.17	185.00
November	160.74	157.07	126.76	190.15
December	141.88	157.91	132.06	146.58
January	126.30	171.94	170.25	0.00
February	143.47	165.34	158.61	0.00
March	152.40	169.36	162.58	0.00
April	179.37	173.17	162.84	0.00
May	191.02	177.34	203.68	0.00
June	147.07	139.58	104.23	0.00
Monthly Average	151.72	163.89	155.37	

**Fig:1 GRAPH OF QUANTUM INDEX OF LARGE SCALE MANUFACTURING INDUSTRIES
(BASE: 2005-06 = 100)**



Coverage

This survey report covered **63** industrial units pertaining to **13** Large-Scale Manufacturing industries manufacturing **23** items, which contribute about 36% in the total value added of Large-Scale Manufacturing sector in Khyber Pakhtunkhwa.

Industrial Production Index

Industrial Production Index for the month of Dec-2016 stood at against 146.58 and 190.15 as compared to Nov-2016. The month wise and year wise Index Series are given at Fig-1.

PRODUCTION DURING December 2016 VS November 2016

Overall production during the month of December -2016 over November -2016 was 22.91% Lower than November-2016.

Table 2 indicates category-wise manufacturing data with Relative Index.

The production was higher in case of Electric Bulb (34.95%), Gssp (30.7%), Sugar (11.32%), Cotton Yarn (3.87%), Matches (3.61%) and Cooking Oil (2.86%).

The production was lower in case of Beverages (97.25%), Tablets (61.46%), Blankets (56.58%), Capsules (56.54%), Injections (48.63%), Liquids / Syrups (42.21%), Fruit Juices (30.97%), Fabrics (12.68%), Syrups & Squashes (7.21%), Cement (4.68%), Cigarettes (2.19%) and Board (1.21%).

PRODUCTION DURING December 2016 VS December 2015

Table 3 indicates category-wise manufacturing data with Relative Index.

The production was higher in case of Gssp (272.18%), Cooking Oil (117.31%), Ghee (34.64%), Cigarettes (28.67%) and Cement (0.26%).

The Production was lower in case of Syrups & Squashes (99.71%), Liquids / Syrups (97.72%), Sugar (90.32%), Tablets (90.08%), Injections (80.08%), Capsules (77.03%), Beverages (76.48%), Blankets (64.17%), Fruit Juices (28.47%), Matches (22.69%), Fabrics (16.22%), Electric Bulb (13.39%), Board (12.52%), Cotton Yarn (8.22%) and Paper (2.81%).

PRODUCTION DURING Jul-December-2016-17 & Jul-December-2015-16

Table 4 indicates category wise manufacturing data with relative index.

The Production was higher in case of Gssp (154.85%), Electric Bulb (47.53%), Beverages (44.67%), Ghee (15.35%), Paper (9.93%), Sanitary Ware (7.98%) and Cigarettes (2.11%).

The production was lower in case of Liquids / Syrups (97.17%), Injections (85.82%), Sugar (83.19%), Tablets (82.19%), Syrups & Squashes (77.93%), Capsules (58.87%), Blankets (39.7%), Cooking Oil (25.06%), Matches (16.82%), Fruit Juices (8.78%), Cotton Yarn (7.76%), Board (6.71%), Fabrics (3.29%) and Cement (1.92%).

Employment during December-2016 vs November-2016

Table 5 indicates employment status. Total Employment during December 2016 was 1.41% less than November 2016.

Of the total employment production workers were 13521 and non-production workers were 4039.

**REPORTED UNITS FOR THE MONTH OF DECEMBER 2016, NOVEMBER 2016 AND
DECEMBER 2015**

Table 1

S.No.	Industry Name	Dec 2016	Nov 2016	Dec 2015
1	Beverages	6	6	6
2	Cement	7	7	7
3	Ceramics	2	2	2
4	Cigarettes	4	4	3
5	Cotton Textile	6	6	5
6	Electric Bulb	1	1	2
7	Fertilizer	1	1	1
8	Matches	8	8	12
9	Paper & Paper Board	2	2	2
10	Pharmaceutical	8	12	30
11	Sugar	2	2	5
12	Vegetable Ghee	15	15	12
13	Woolen	1	1	1
	Total	63	67	88

**PRODUCTION OF SELECTED ITEMS OF LARGE SCALE INDUSTRIES IN KHYBER
PAKHTUNKHWA DURING THE MONTH OF DECEMBER-2016
AND NOVEMBER-2016**

Table 2

S. No.	Industry / Item	Unit Of Quantity	Production		Relative Index Dec-2016 over Nov-2016
			Dec-2016	Dec-2016	
1	Beverages				
I	Beverages	Ltr	550058	19989037	2.75
II	Fruit Juices	Ltr	3900114	5649893	69.03
III	Syrups & Squashes	Ltr	15591	16803	92.79
2	Cement				
I	Cement	M.Ton	928551	974157	95.32
3	Ceramics				
I	Sanitary Ware	Pcs	7770	7770	100.00
II	Wall Tiles	Sq.M	214359	214359	100.00
4	Cigarettes				
I	Cigarettes	M.Nos	2325	2377	97.81
5	Cotton Textile				
I	Cotton Cloth	000 Mtrs	203	203	100.00
II	Cotton Yarn	M.Ton	6097	5870	103.87
6	Electric Bulb				
I	Electric Bulb	000 Nos	3460	2564	134.95
7	Fertilizer				
I	Gssp	M.Ton	5270	4032	130.70
8	Matches				
I	Matches	M.Box	201	194	103.61
9	Paper & Paper Board				
I	Board	M.Ton	489	495	98.79
II	Paper	M.Ton	622	622	100.00
10	Pharmaceutical				
I	Capsules	000 Nos	4538	10441	43.46
II	Injections	000 Nos	845	1645	51.37
III	Liquids / Syrups	000 Ltrs	204	353	57.79
IV	Tablets	000 Nos	4699	12191	38.54
11.	Sugar				
I	Sugar	M.Ton	4475	4020	111.32
12	Vegetable Ghee				
I	Cooking Oil	M.Ton	4646	4517	102.86
II	Ghee	M.Ton	20948	20916	100.15
13	Woolen				
I	Blankets	No	1778	4095	43.42
II	Fabrics	000 Mtrs	124	142	87.32

PRODUCTION OF SELECTED ITEMS OF LARGE SCALE MANUFACTURING INDUSTRIES IN KHYBER PAKHTUNKHWA DURING THE MONTH OF DECEMBER 2016 AND DECEMBER 2015

Table 3

S. No.	Industry / Item	Unit Of Quantity	Production		Relative Index Dec-2016 over Dec-2015
			Dec-2016	Dec-2015	
1	Beverages				
I	Beverages	Ltr	550,058	2,338,950	23.52
II	Fruit Juices	Ltr	3,900,114	5,452,486	71.53
III	Syrups & Squashes	Ltr	15,591	5,363,086	0.29
2	Cement				
I	Cement	M.Ton	928,551	926,182	100.26
3	Ceramics				
I	Sanitary Ware	Pcs	7,770	7,770	100.00
II	Wall Tiles	Sq.M	214,359	214,359	100.00
4	Cigarettes				
I	Cigarettes	M.Nos	2,325	1,807	128.67
5	Cotton Textile				
I	Cotton Cloth	000 Mtrs	203	203	100.00
II	Cotton Yarn	M.Ton	6,097	6,643	91.78
6	Electric Bulb				
I	Electric Bulb	000 Nos	3,460	3,995	86.61
7	Fertilizer				
I	Gssp	M.Ton	5,270	1,416	372.18
8	Matches				
I	Matches	M.Box	201	260	77.31
9	Paper & Paper Board				
I	Board	M.Ton	489	559	87.48
II	Paper	M.Ton	622	640	97.19
10	Pharmaceutical				
I	Capsules	000 Nos	4,538	19,758	22.97
III	Injections	000 Nos	845	4,243	19.92
IV	Liquids / Syrups	000 Ltrs	204	8,951	2.28
VI	Tablets	000 Nos	4,699	47,385	9.92
11.	Sugar				
I	Sugar	M.Ton	4,475	46,220	9.68
12	Vegetable Ghee				
I	Cooking Oil	M.Ton	4,646	2,138	217.31
II	Ghee	M.Ton	20,948	15,559	134.64
13	Woolen				
I	Blankets	No	1,778	4,963	35.83
II	Fabrics	000 Mtrs	124	148	83.78

**PRODUCTION OF SELECTED ITEMS OF LARGE SCALE INDUSTRIES IN KHYBER
PAKHTUNKHWA DURING THE MONTH OF JUL-DEC: 2016-17 AND JUL-DEC: 2015-16**

Table 4

S. No.	Industry / Item	Unit Of Quantity	Production		Relative Index Jul-Dec 2016-17 Over Jul-Dec 2015-16
			Jul-Dec 2016-17	Jul-Dec 2015-16	
1	BEVERAGES				
I	BEVERAGES	Ltr	96952667	67018638	144.67
II	FRUIT JUICES	Ltr	33044808	36223734	91.22
III	SYRUPS & SQUASHES	Ltr	7420788	33624282	22.07
2	CEMENT				
I	CEMENT	M.Ton	5156853	5257728	98.08
3	CERAMICS				
I	SANITARY WARE	Pcs	46620	43175	107.98
II	WALL TILES	Sq.M	1286154	1286154	100.00
4	CIGARETTES				
I	CIGARETTES	M.Nos	11875	11630	102.11
5	COTTON TEXTILE				
I	COTTON CLOTH	000 Mtrs	1218	1218	100.00
II	COTTON YARN	M.Ton	39203	42499	92.24
6	ELECTRIC BULB				
I	ELECTRIC BULB	000 Nos	21952	14880	147.53
7	FERTILIZER				
I	GSSP	M.Ton	32109	12599	254.85
8	MATCHES				
I	MATCHES	M.Box	1271	1528	83.18
9	PAPER AND PAPER BOARD				
I	BOARD	M.Ton	3003	3219	93.29
II	PAPER	M.Ton	3686	3353	109.93
10	PHARMACEUTICAL				
I	CAPSULES	000 Nos	44477	108126	41.13
III	INJECTIONS	000 Nos	6716	47370	14.18
IV	LIQUIDS / SYRUPS	000 Ltrs	1496	52787	2.83
VI	TABLETS	000 Nos	48864	274371	17.81
11	SUGAR				
I	SUGAR	M.Ton	8495	50530	16.81
12	VEGETABLE GHEE				
I	COOKING OIL	M.Ton	22404	29894	74.94
II	GHEE	M.Ton	110889	96134	115.35
13	WOOLEN				
I	BLANKETS	No	13152	21812	60.30
II	FABRICS	000 Mtrs	705	729	96.71

TOTAL NUMBER OF EMPLOYMENT (PRODUCTION & NON-PRODUCTION) WORKERS IN SELECTED ITEMS OF LARGE SCALE INDUSTRIES IN KHYBER PAKHTUNKHWA DURING THE MONTH OF DECEMBER-2016 , NOVEMBER-2016 AND DECEMBER-2015

Table 5

S. No.	Industry	Total Employment			Relative Index	
		Dec-16	Nov-16	Dec-15	Dec-2016 over Nov-2016	Dec-2016 over Dec-2015
1	Beverages	1200	1090	1214	110.09	98.85
2	Cement	3045	3015	3120	101.00	97.60
3	Ceramics	205	205	205	100.00	100.00
4	Cigarettes	788	788	749	100.00	105.21
5	Cotton Textile	7713	7722	7129	99.88	108.19
6	Electric Bulb	0	0	298	0.00	0.00
7	Fertilizer	193	188	204	102.66	94.61
8	Matches	1119	1114	1228	100.45	91.12
9	Paper & Paper Board	110	110	114	100.00	96.49
10	Pharmaceutical	183	575	1397	31.83	13.10
11	Sugar	1283	1280	3202	100.23	40.07
12	Vegetable Ghee	1094	1095	1055	99.91	103.70
13	Woolen	627	629	698	99.68	89.83

TOTAL NO. OF PRODUCTION WORKERS OF SELECTED ITEMS OF LARGE SCALE INDUSTRIES IN KHYBER PAKHTUNKHWA DURING THE MONTH OF DECEMBER-2016, NOVEMBER-2016 AND DECEMBER-2015

Table 6

S. No.		Production Workers			Relative Index	
		Dec-16	Nov-16	Dec-15	Dec-2016 over Nov-2016	Dec-2016 over Dec-2015
1	Beverages	547	432	727	126.62	75.24
2	Cement	2204	2182	2236	101.01	98.57
3	Ceramics	162	162	162	100.00	100.00
4	Cigarettes	513	513	421	100.00	121.85
5	Cotton Textile	6568	6581	6506	99.80	100.95
6	Electric Bulb		0	230	0.00	0.00
7	Fertilizer	148	142	161	104.23	91.93
8	Matches	1000	995	1228	100.50	81.43
9	Paper & Paper Board	80	80	84	100.00	95.24
10	Pharmaceutical	144	356	1006	25.28	8.95
11	Sugar	824	820	2205	100.49	37.37
12	Vegetable Ghee	774	775	715	99.87	108.25
13	Woolen	557	558	498	99.82	111.85

PRODUCTION AND EMPLOYMENT IN BEVERAGES INDUSTRY IN KHYBER PAKHTUNKHWA

Annexure-I

Year/ Month	No. of Report ing Unit	Production			Value of Production Rs.000			Employment (Nos)			Salaries/Wages Paid Rs. 000		
		Beverages (Liter)	Fruit Juices (Liter)	Syrups & Squashes (Liter)	Beverages	Fruit Juices	Syrups & Squashes	Total	Produ- tion	Non- Produ- tion	Total	Produ- tion	Non- Produ- tion
2000-01	2	4412671	0	0	616253	0	0	338	86	252	688	159	529
2001-02	2	4968896	0	0	872846	0	0	319	80	239	1730	399	1331
2002-03	2	4379549	0	0	758233	0	0	295	86	209	1592	443	1149
2003-04	2	4944266	0	0	954858	0	0	267	91	176	668	184	484
2004-05	2	4351032	0	0	2285315	0	0	218	66	152	338	102	236
2005-06	1	5346986	0	0	1256464	0	0	249	60	189	0	0	0
2006-07	2	7842285	0	0	1107999	0	0	295	84	211	25	18	7
2007-08	3	8889115	0	0	1624340	0	0	265	66	199	19	13	6
2008-09	2	10539438	2019633	0	1814374	505771	0	292	78	214	0	0	0
2009-10	2	83314494	10373838	0	2803255	103545	0	290	55	235	0	0	0
2010-11	6	97681697	24309103	13525408	6038288	5646027	2044639	660	254	406	4655	2082	2573
2011-12	7	131312219	76208221	21402446	8702110	540002085	1628910085	944	382	562	5369	3094	2275
2012-13	8	109399382	64685485	34348999	22826679	347758034	785584229	1152	473	679	5640	2869	2771
2013-14	7	161196546	31062657	35972662	57336295	119747623	6912454	1124	499	625	7045	3721	3324
2014-15	7	193378135	59481116	45235623	81099271	22494266	42502321	1226	720	506	9055	4506	4549
2015-16	8	119148911	69007937	73615419	16000792	3803881	12566259	1404	711	693	31130	17073	14057
Jul-Dec	7	67018638	36223734	33624282	5988209	1770708	5799936	1480	750	730	22556	7248	15308
Jul-2015	7	15442926	6622092	6808852	1592	295118	1008961	1827	951	876	22699	7748	14951
Aug-2015	7	14711628	6622092	5363086	2058557	295118	958195	1016	620	396	22768	7155	15613
Sep-2015	7	19459240	6622092	5363086	2058557	295118	958195	1556	735	821	22768	7155	15613
Oct-2015	6	12864723	5452486	5363086	1241584	295118	958195	1525	735	790	22367	7144	15223
Nov-2015	6	2201171	5452486	5363086	372639	295118	958195	1497	730	767	22367	7144	15223
Dec-2015	6	2338950	5452486	5363086	255280	295118	958195	1455	727	728	22367	7144	15223
Jan-2016	6	2338950	1547879	9143417	255280	85988	760451	1499	769	730	35981	19945	16036
Feb-2016	5	2309349	5039950	3979266	158724	268579	783835	1090	510	580	34512	21470	13042
Mar-2016	6	2349129	6413379	5603594	2483298	352842	1088274	1189	582	607	33474	28058	5416
Apr-2016	6	2349129	6846113	5452209	2483298	421058	1067081	1214	610	604	42607	28609	13998
May-2016	7	22291795	6209613	8739205	1532449	474875	1699360	1489	792	697	45012	30638	14374
Jun-2016	6	20491921	6727269	7073446	3099534	429831	1367322	1483	768	715	46640	32663	13977
2016-17	6	96952667	33044808	7420788	5962436	2013501	4014341	1185	516	669	23614	9462	14152
Jul-2016	6	23226139	6533139	7011418	2748694	413929	1359134	1465	762	703	46600	32643	13957
Aug-2016	6	12943185	5917084	259567	566037	355577	472790	1167	483	684	19253	4850	14403
Sep-2016	6	20255211	5229944	100606	686254	309159	635919	1095	437	658	18583	4432	14151
Oct-2016	6	19989037	5814634	16803	653817	359793	499686	1090	432	658	18526	4598	13928
Nov-2016	6	19989037	5649893	16803	653817	338737	499686	1090	432	658	18526	4598	13928
Dec-2016	6	550058	3900114	15591	653817	236306	547126	1200	547	653	20195	5650	14545

PRODUCTION AND EMPLOYMENT IN CEMENT INDUSTRY IN KHYBER PAKHTUNKHWA

Annexure-II

Year/Month	No. of Reporting Unit	Production in MT	Value (Rs. in 000)	Employment (Nos)			Salaries/Wages Paid (Rs. 000)		
				Total	Production	Non-Production	Total	Production	Non-Production
2000-01	3	1924161	3135250	1342	677	665	3989	1946	2043
2001-02	4	1976109	1096344	1467	860	607	6654	3456	3198
2002-03	4	3228029	3233573	1467	951	516	6111	3605	2506
2003-04	5	4181258	5257389	1347	908	439	3782	2348	1434
2004-05	4	4632995	6920750	956	739	217	1501	1360	141
2005-06	4	5136146	16143498	1083	833	250	5899	4622	1277
2006-07	5	6838947	28718882	1681	1243	438	12001	9331	2670
2007-08	6	7339248	34479686	1677	1261	416	11969	9856	2113
2008-09	6	6874597	17429543	2086	1624	462	13852	11106	2746
2009-10	7	8573131	31671116	2465	1835	630	25405	19474	5931
2010-11	8	8572389	49169544	2516	1875	641	31262	23026	8236
2011-12	8	8813090	73386819	2644	1933	711	39853	29015	10838
2012-13	8	9328749	64607345	2793	2037	756	45792	32340	13452
2013-14	8	9237287	75523661	3033	2301	732	42711	30853	11858
2014-15	8	9603794	77720199	3069	2343	726	45623	33069	12554
2015-16	8	10438301	30811646	4113	2285	1828	63343	44936	18407
Jul-Dec	8	5257728	19512413	3260	2409	851	60865	42632	18233
Jul-2015	8	784883	5890391	3497	2602	895	54862	37251	17611
Aug-2015	8	877382	6507085	3519	2613	906	65124	46552	18572
Sep-2015	8	978993	2272545	3506	2605	901	65477	47000	18477
Oct-2015	7	845144	1923792	2995	2200	795	55567	37717	17850
Nov-2015	7	845144	1923792	2995	2200	795	55567	37717	17850
Dec-2015	7	926182	994808	3047	2236	811	68591	49556	19035
Jan-2016	7	852079	1754568	3048	2234	814	65775	47518	18257
Feb-2016	7	862956	1003154	3075	2241	834	68150	49437	18713
Mar-2016	7	837654	1464141	3101	2265	836	52577	38729	13848
Apr-2016	7	855596	2403323	3120	2282	838	57164	37817	19347
May-2016	7	911815	2325302	14462	1792	12670	69193	48529	20664
Jun-2016	7	860473	2348745	2985	2149	836	82071	61409	20662
2016-17 Jul-Dec	7	5156853	7874229	3006	2175	831	87354	64222	23131
Jul-2016	7	641602	1227610	2984	2159	825	83083	61676	21407
Aug-2016	7	901765	953574	2982	2149	833	87721	63925	23796
Sep-2016	7	785109	1317675	3006	2174	832	86193	63140	23053
Oct-2016	7	925669	1390985	3003	2180	823	88779	66199	22580
Nov-2016	7	974157	1494937	3015	2182	833	87617	63871	23746
Dec-2016	7	928551	1489448	3045	2204	841	90729	66523	24206

PRODUCTION AND EMPLOYMENT IN CERAMICS INDUSTRY IN KHYBER PAKHTUNKHWA

Annexure-III

Year/ Month	No. of Reporting Unit	Production		Value (Rs. in 000)		Employment (Nos)			Salaries/Wages Paid (Rs. 000)		
		Sanitary Ware (Pieces)	Wall Tiles (in Sq.Mtr)	Sanit- ary Ware	Wall Tiles	Total	Produ- ction	Non- Production	Total	Produc- tion	Non- Production
2000-01	1	0	423342	0	54841	106	81	25	276	214	62
2001-02	1	0	643829	0	81838	113	91	22	274	218	56
2002-03	1	0	1146803	0	151652	99	77	22	279	220	59
2003-04	2	13750	1407693	3588	132709	104	77	27	268	202	66
2004-05	2	29545	1443957	7667	140170	120	84	36	390	266	124
2005-06	2	26079	1511371	6253	155750	131	90	41	442	320	122
2006-07	2	29461	1812548	6291	221798	153	118	35	541	431	110
2007-08	2	32016	2473633	9601	311712	200	132	68	695	538	157
2008-09	2	35639	2447234	15747	335935	191	143	48	1461	1263	198
2009-10	2	36262	2183589	14985	350856	201	150	51	1081	869	212
2010-11	2	48596	2059156	24194	404637	204	149	55	1250	952	298
2011-12	2	59180	2417179	29585	498802	203	150	53	1273	965	308
2012-13	2	81515	2155370	45218	915219	210	158	52	1773	1251	522
2013-14	2	88918	2139953	44457	570341	208	160	48	1956	1613	343
2014-15	2	79828	2336105	40909	972194	202	156	46	2017	1677	340
2015-16	2	89795	2572308	44525	670752	201	160	41	2001	1744	257
Jul-Dec	2	43175	1286154	21215	335376	197	158	39	2001	1744	257
Jul-2015	2	3900	214359	0	55896	160	139	21	2001	1744	257
Aug-2015	2	7890	214359	4734	55896	204	161	43	2001	1744	257
Sep-2015	2	7890	214359	4734	55896	204	161	43	2001	1744	257
Oct-2015	2	7955	214359	3977	55896	205	162	43	2001	1744	257
Nov-2015	2	7770	214359	3885	55896	205	162	43	2001	1744	257
Dec-2015	2	7770	214359	3885	55896	205	162	43	2001	1744	257
Jan-2016	2	7770	214359	3885	55896	205	162	43	2001	1744	257
Feb-2016	2	7770	214359	3885	55896	205	162	43	2001	1744	257
Mar-2016	2	7770	214359	3885	55896	205	162	43	2001	1744	257
Apr-2016	2	7770	214359	3885	55896	205	162	43	2001	1744	257
May-2016	2	7770	214359	3885	55896	205	162	43	2001	1744	257
Jun-2016	2	7770	214359	3885	55896	205	162	43	2001	1744	257
2016-17Jul-Dec	1	46620	1286154	23310	335376	205	162	43	2001	1744	257
Jul-2016	1	7770	214359	3885	55896	205	162	43	2001	1744	257
Aug-2016	1	7770	214359	3885	55896	205	162	43	2001	1744	257
Sep-2016	1	7770	214359	3885	55896	205	162	43	2001	1744	257
Oct-2016	1	7770	214359	3885	55896	205	162	43	2001	1744	257
Nov-2016	1	7770	214359	3885	55896	205	162	43	2001	1744	257
Dec-2016	1	7770	214359	3885	55896	205	162	43	2001	1744	257

PRODUCTION AND EMPLOYMENT IN CIGARETTES INDUSTRY IN KHYBER PAKHTUNKHWA

Annexure-IV

Year/ Month	No. of Reporting Unit	Production in Million Nos	Value (Rs. in 000)	Employment (Nos)			Salaries/Wages Paid (Rs. 000)		
				Total	Production	Non- Production	Total	Production	Non- Production
2000-01	8	17519	7693964	2138	1614	524	99	66	33
2001-02	6	17366	6766934	1642	1151	491	91	57	34
2002-03	5	13864	6203373	1579	1186	393	3528	2995	533
2003-04	6	14063	6703370	1489	1220	269	11544	9985	1559
2004-05	7	15918	8236263	1412	1134	278	11188	9819	1369
2005-06	4	17364	8692215	871	702	169	10941	9652	1289
2006-07	5	20777	13189374	879	708	171	12809	11437	1372
2007-08	5	20606	14876450	840	682	158	13612	12153	1459
2008-09	5	24217	19162180	925	767	158	14335	12918	1417
2009-10	7	19941	19229686	945	778	167	20332	18382	1950
2010-11	8	19673	21544188	941	775	166	26817	23055	3762
2011-12	8	27248	58730251	1074	898	176	28606	25935	2671
2012-13	9	22976	35110502	841	688	153	23531	21284	2247
2013-14	7	23312	51575123	853	708	145	25341	22518	2823
2014-15	7	22219	41737830	900	761	139	33636	30368	3268
2015-16	7	25548	49723601	775	540	235	9137	5676	3461
Jul-Dec	5	11630	29172080	794	597	197	8615	5481	3134
Jul-2015	7	1149	2745380	1000	847	153	12427	8500	3927
Aug-2015	7	2174	5222937	998	847	151	12692	8687	4005
Sep-2015	4	2298	8893935	604	523	81	6716	3988	2728
Oct-2015	4	2395	4113664	804	523	281	6638	3913	2725
Nov-2015	3	1807	4098082	679	421	258	6608	3898	2710
Dec-2015	3	1807	4098082	679	421	258	6608	3898	2710
Jan-2016	4	3047	4099957	795	516	279	6530	3830	2700
Feb-2016	3	2707	4107371	749	476	273	6529	3829	2700
Mar-2016	3	2725	4094776	749	476	273	15949	9985	5964
Apr-2016	3	2725	4094776	749	476	273	15949	9985	5964
May-2016	3	2691	4113369	748	475	273	6512	3811	2701
Jun-2016	3	23	41272	743	474	269	6483	3782	2701
2016-17 Jul-Dec	4	11875	309075	780	506	274	7409	4711	2698
Jul-2016	3	741	38853	742	473	269	6479	3779	2700
Aug-2016	4	1792	51735	788	513	275	6480	3781	2699
Sep-2016	4	2311	51478	788	513	275	6474	3778	2696
Oct-2016	4	2329	52308	788	513	275	6463	3763	2700
Nov-2016	4	2377	52818	788	513	275	12082	9387	2695
Dec-2016	4	2325	61883	788	513	275	6476	3780	2696

PRODUCTION AND EMPLOYMENT IN COTTON TEXTILE INDUSTRY IN KHYBER PAKHTUNKHWA

Annexure-V

Year/ Month	No. of Reporting Unit	Production		Value in (Rs.000)		Employment (Nos)			Salaries/Wages Paid (Rs. in 000)		
		Cotton Cloth (000 Mtr)	Cotton Yarn (M.T)	Cotton Cloth	Cotton Yarn	Total	Produ- ction	Non- Produ- ction	Total	Produ- ction	Non- Produ- ction
2000-01	9	2562	60462	44730	6727561	0	0	0	0	0	0
2001-02	7	3560	57138	32861	6553813	0	0	0	0	0	0
2002-03	8	6557	59386	60438	6959710	3747	2792	955	4344	2882	1462
2003-04	9	7823	69317	134418	8327030	8950	6630	2320	11796	7760	4036
2004-05	15	17674	86620	300364	10316963	10724	8253	2471	22293	15262	7031
2005-06	15	14067	106584	141515	13242872	11705	9131	2574	33648	25177	8471
2006-07	12	3510	96697	29305	12003673	13880	11068	2812	51091	39325	11766
2007-08	14	6931	89618	24502	11870298	11884	9367	2517	34820	26062	8758
2008-09	11	3290	88696	67632	12181160	10562	7781	2781	25323	21490	3833
2009-10	14	2824	96757	100692	19029564	9662	7626	2036	20444	16039	4405
2010-11	12	1974	89377	190300	28316120	8200	6436	1764	18637	14220	4417
2011-12	14	11351	86109	168135	25091312	8324	6785	1539	17702	16018	1684
2012-13	19	9842	110848	134772	30404249	10042	8377	1665	16161	14590	1571
2013-14	10	3613	107734	761347	30980022	7836	6442	1394	21550	19662	1888
2014-15	9	2436	107145	200868	28491116	7959	6543	1416	41528	36846	4682
2015-16	9	2436	84786	200868	16812875	7816	6495	1321	28536	21546	6990
Jul-Dec	6	1218	42499	100434	9758204	7602	6261	1341	33252	24066	9186
Jul-2015	7	203	7836	16739	2125989	8115	6650	1465	25740	19630	6110
Aug-2015	6	203	7728	16739	2002704	6616	5220	1396	26860	19340	7520
Sep-2015	5	203	6737	16739	2135037	7488	6183	1305	36737	26369	10368
Oct-2015	5	203	6889	16739	2105146	7794	6499	1295	36738	26368	10370
Nov-2015	5	203	6666	16739	699093	7797	6505	1292	36725	26343	10382
Dec-2015	5	203	6643	16739	690235	7798	6506	1292	36712	26348	10364
Jan-2016	7	203	7418	16739	687415	8527	7183	1344	46150	35129	11021
Feb-2016	7	203	6588	16739	1108388	8390	7164	1226	19253	15743	3510
Mar-2016	6	203	6822	16739	608850	7134	5859	1275	19338	15795	3543
Apr-2016	6	203	6780	16739	610735	7129	5867	1262	19156	15561	3595
May-2016	7	203	7841	16739	2219070	8510	7158	1352	19132	15537	3595
Jun-2016	6	203	6838	16739	1820213	8494	7151	1343	19896	16392	3504
2016-17 Jul-Dec	6	1218	39203	100434	10238786	7727	6579	1148	11213	10082	1132
Jul-2016	6	203	7030	16739	1957087	7750	6693	1157	9877	9126	751
Aug-2016	6	203	7379	16739	2009786	7744	6587	1157	10095	9256	839
Sep-2016	6	203	7119	16739	1633046	7714	6665	1149	9889	9126	763
Oct-2016	6	203	5708	16739	1358650	7716	6578	1138	12469	10994	1475
Nov-2016	6	203	5870	16739	1661381	7722	6681	1141	12475	10994	1481
Dec-2016	6	203	6097	16739	1618836	7713	6568	1145	12475	10994	1481

PRODUCTION AND EMPLOYMENT IN FERTILIZER INDUSTRY IN KHYBER PAKHTUNKHWA

Annexure-VII

Year/ Month	No. of Reporting Unit	Production in M.T.	Value (Rs. in 000)	Employment (Nos)			Salaries/Wages Paid (Rs.000)		
				Total	Produ- ction	Non- Production	Total	Produ- ction	Non- Production
2000-01	1	113340	539664	250	161	89	0	0	0
2001-02	1	113340	539664	250	161	89	0	0	0
2002-03	1	80007	411483	144	48	96	0	0	0
2003-04	1	92905	528136	180	44	136	0	0	0
2004-05	1	87340	539234	233	51	182	0	0	0
2005-06	1	85455	1072436	256	53	203	0	0	0
2006-07	1	81930	590517	252	47	205	0	0	0
2007-08	1	92380	590625	239	40	199	0	0	0
2008-09	1	91821	1346428	203	100	103	2635	1776	859
2009-10	1	101225	1321419	267	205	62	6387	4688	1699
2010-11	1	94263	1423949	269	210	59	6655	5207	1448
2011-12	1	68191	1519836	265	203	62	6875	5254	1621
2012-13	1	57822	1236272	240	185	55	6804	5251	1553
2013-14	1	75624	1526751	253	197	56	7981	6295	1686
2014-15	1	51382	963349	240	188	52	8192	6480	1712
2015-16	1	46237	760744	213	165	48	7634	5969	1665
Jul-Dec	1	12599	230071	228	178	50	7666	5981	1685
Jul-2015	1	1580	30832	234	183	51	7565	5887	1678
Aug-2015	1	1580	30832	234	183	51	7565	5887	1678
Sep-2015	1	1580	30832	234	183	51	7565	5887	1678
Oct-2015	1	1580	30832	234	183	51	7565	5887	1678
Nov-2015	1	4863	82671	221	173	48	7932	6217	1715
Dec-2015	1	1416	24072	207	161	46	7799	6119	1680
Jan-2016	1	2928	49776	204	158	46	7691	6036	1655
Feb-2016	1	9504	132675	195	149	46	7364	5724	1640
Mar-2016	1	2928	49776	204	158	46	7691	6036	1655
Apr-2016	1	2928	49776	204	158	46	7691	6036	1655
May-2016	1	7675	124335	194	148	46	7589	5957	1632
Jun-2016	1	7675	124335	194	148	46	7589	5957	1632
2016-17Jul-Dec	1	32109	177541	190	144	46	7928	6196	1732
Jul-2016	1	4823	79097	192	145	47	7849	6182	1667
Aug-2016	1	5636	92430	191	144	47	7590	5932	1658
Sep-2016	1	4032	63706	188	142	46	8055	6290	1765
Oct-2016	1	8316	1392174	187	141	46	8090	6289	1801
Nov-2016	1	4032	63706	188	142	46	8055	6290	1765
Dec-2016	1	5270	86428	193	148	45	7928	6194	1734

PRODUCTION AND EMPLOYMENT IN MATCH INDUSTRY IN KHYBER PAKHTUNKHWA

Annexure-VIII

Year/ Month	No. of Reporting Unit	Production in M.Nos.	Value (Rs. in 000)	Employment (Nos)			Salaries/Wages Paid (Rs. in 000)		
				Total	Production	Non- Production	Total	Production	Non- Production
2001-02	5	945	234925	235	211	24	413	350	63
2002-03	3	1123	250099	256	225	31	719	598	121
2003-04	7	2591	696433	548	456	92	479	342	137
2004-05	13	2630	697400	641	536	105	849	628	221
2005-06	10	4036	1403202	1709	1486	223	3793	2942	851
2006-07	15	5168	1721495	1041	850	191	2944	2353	591
2007-08	16	5535	1581460	908	736	172	2728	2152	576
2008-09	14	4601	1504411	1917	1592	325	7994	6254	1740
2009-10	16	4494	1433559	2231	1820	411	7652	5916	1736
2010-11	17	4359	1759573	1944	1669	275	8797	7023	1774
2011-12	15	3984	1488998	2536	2260	276	15171	13195	1976
2012-13	16	4757	2188252	1647	1450	197	15918	13738	2180
2013-14	15	4580	2151827	1560	1359	201	11139	8390	2749
2014-15	14	3766	2284249	1475	1300	175	13714	10983	2731
2015-16	13	2864	1098529	1338	1184	154	17131	13550	3581
Jul-Dec	12	1528	600988	1394	1227	167	18085	14232	3853
Jul-2015	11	264	146707	1321	1160	161	15917	13085	2832
Aug-2015	11	258	132717	1343	1195	148	17245	14105	3140
Sep-2015	13	257	88770	1534	1319	215	21551	15643	5908
Oct-2015	12	249	86277	1386	1228	158	18282	14169	4113
Nov-2015	12	240	83709	1388	1230	158	17812	14246	3566
Dec-2015	12	260	62808	1387	1228	159	17706	14145	3561
Jan-2016	12	256	87843	1389	1231	158	17785	14241	3544
Feb-2016	12	236	81156	1389	1231	158	17790	14258	3532
Mar-2016	11	208	73920	1284	1143	141	16042	12753	3289
Apr-2016	10	206	114143	1228	1096	132	15247	12090	3157
May-2016	10	235	78955	1226	1094	132	15102	11944	3158
Jun-2016	9	195	61524	1177	1049	128	15087	11915	3172
2016-17 Jul-Dec	9	1271	460947	1154	1029	125	14334	11209	3125
Jul-2016	9	201	65057	1176	1048	128	11709	8626	3083
Aug-2016	9	231	86348	1174	1046	128	15355	12176	3179
Sep-2016	9	214	78048	1169	1041	128	15340	12151	3189
Oct-2016	9	230	84879	1173	1045	128	14695	11492	3203
Nov-2016	8	194	70503	1114	995	119	14460	11417	3043
Dec-2016	8	201	76112	1119	1000	119	14444	11393	3051

PRODUCTION AND EMPLOYMENT IN PAPER & PAPER BOARD INDUSTRY IN KHYBER PAKHTUNKHWA

Annexure-IX

Year/ Month	No. of Reporting Unit	Production (MT)		Value (Rs. in 000)		Employment (Nos)			Salaries/Wages Paid (Rs. in 000)		
		Board	Paper	Board	Paper	Total	Production	Non-Production	Total	Production	Non-Production
2000-01	1	0	7245	0	275220	180	127	53	0	0	0
2001-02	1	0	6320	0	231082	179	127	52	0	0	0
2002-03	2	7493	9198	96815	420795	236	172	64	0	0	0
2003-04	2	11877	8039	134779	338053	233	166	67	0	0	0
2004-05	3	5320	8254	63786	397793	311	248	63	30	7	23
2005-06	2	4722	6859	63048	224398	208	148	60	0	0	0
2006-07	2	4358	5842	127913	177988	215	154	61	0	0	0
2007-08	2	3796	5659	73416	233681	227	163	64	0	0	0
2008-09	2	4318	5375	88025	256169	246	181	65	159	135	24
2009-10	3	11593	1805	193560	88916	134	95	39	422	272	150
2010-11	4	11373	1674	241112	66787	209	148	61	976	637	339
2011-12	4	4129	7965	130201	199988	230	178	52	1206	933	273
2012-13	4	6359	7154	113379	182042	191	138	53	1130	781	349
2013-14	4	8062	6806	264426	201266	172	135	37	1685	1285	400
2014-15	3	7891	7388	304189	241974	148	109	39	1728	1333	395
2015-16	3	6911	7183	390697	236187	198	118	80	1515	1055	460
Jul-Dec	2	3219	3353	259865	112058	202	150	52	1650	1281	369
Jul-2015	3	534	500	23523	16487	293	265	28	1701	1345	356
Aug-2015	3	534	500	23523	16487	293	265	28	1701	1345	356
Sep-2015	2	466	571	153366	19528	114	92	22	1627	1208	419
Oct-2015	2	563	571	19341	19528	119	97	22	1664	1245	419
Nov-2015	2	563	571	19341	19528	119	97	22	1664	1245	419
Dec-2015	2	559	640	20771	20500	274	84	190	1542	1295	247
Jan-2016	2	590	644	21248	20061	274	84	190	1541	872	669
Feb-2016	2	551	644	21025	20061	274	84	190	1522	853	669
Mar-2016	2	594	646	21025	20061	274	84	190	0	0	0
Apr-2016	2	556	616	20866	20908	114	82	32	1729	1084	645
May-2016	2	703	640	23722	21519	114	92	22	1741	1082	659
Jun-2016	2	698	640	22946	21519	114	92	22	1743	1084	659
2016-17 Jul-Dec	2	3003	3686	99179	110264	150	122	29	2267	1671	596
Jul-2016	2	500	698	19876	15805	348	327	21	4868	4485	383
Aug-2016	2	594	660	19698	20986	112	81	31	1708	1072	636
Sep-2016	2	452	462	15363	15192	110	80	30	1650	1051	599
Oct-2016	2	473	622	14528	19427	112	82	30	1795	1151	644
Nov-2016	2	495	622	14857	19427	110	80	30	1790	1133	657
Dec-2016	2	489	622	14857	19427	110	80	30	1790	1133	657

PRODUCTION AND EMPLOYMENT IN PHARMACEUTICALS INDUSTRY IN KHYBER PAKHTUNKHWA

Annexure-X

Year/ Month	No. of Report- ing Unit	Production						Value of Production in (Rs.000)						Employment (Nos)			Salaries/Wages Paid (Rs. in 000)		
		Capsules (000 Nos)	Galenical Tinctures/ Spirits (000 Ltr)	Injec- tions (000 Nos)	Liquids/ Syrups (000 Ltr)	Ointmnts (Kg)	Tablets (000 Nos)	Capsule	Galenical Tinctures/ Spirits	Injec- tion	Liquids/ Syrups	Ointmnt	Tablet	Total	Productio n	Non- Productio n	Total	Production	Non- Production
2005-06	9	7737625	39	1784	1263011	46320	143399153	322220	4578360	95307	93226985	23073270	207119889	587	327	260	1787784	1144371	643413
2006-07	10	7265950	5	1724	348573	24851	152996146	12456400	871856	83188	98071458	27801048	188262714	602	328	274	2178015	1455593	722422
2007-08	10	8671607	0	349012	1474324	23307	44606938	6634356	0	149407	20106875	36069	7613553	726	433	293	3150358	2174071	976287
2008-09	13	8678479	0	228418	1013189	1240	30076596	3518090	0	321895	13579801	46073	6656003	749	446	303	2653941	2026674	627267
2009-10	10	14381973	0	300585	1615027	39822	79504742	19076605	1960	770009	53943188	10700353	160169922	182	104	78	440072	312345	127727
2010-11	72	270278	469	6616	342462	36837	1094030	4531262	0	131968	6029438	60286	9790828	1530	957	573	819078	578740	240338
2011-12	72	226415	12	887137	41382	37576	403061	1178211	0	10201367	428094	28540	2817299	1008	654	354	153495	99537	53958
2012-13	50	442982	0	10074	69701	110014	3716145	1082534	8533	182430	252426	40727	4440743	1145	789	356	13203	7303	5900
2013-14	35	112429	0	8146	60319	49725	442031	890889	0	3092183	162411	102646	7334257	1098	784	314	15920	10361	5559
2014-15	39	168308	0	12377	75318	65285	513861	715951	0	647089	292956	132438	3493431	1593	1040	553	23472	13282	10190
2015-16	35	186898	0	51590	72010	50295	436595	651817	0	417366	401753	115469	1528725	1236	841	395	20482	13840	6642
Jul-Dec	31	108126		47370	52787	19043	274371	344094	0	212509	198374	57178	747999	1493	1020	473	28063	18826	9237
Jul-2015	34	13842	0	1019	7905	4114	53888	63986	0	33324	24950	8803	57167	1580	1093	487	27245	18006	9239
Aug-2015	31	18506	0	8934	8958	3765	39562	65186	0	35495	25622	10806	60775	1473	1000	473	26649	17651	8998
Sep-2015	31	16153	0	8967	8991	2728	36405	48551	0	35792	35457	10715	142540	1471	1004	467	33763	24687	9076
Oct-2015	31	18807	0	15202	9061	1233	43777	27480	0	35903	39402	5407	135393	1466	996	470	26385	17068	9317
Nov-2015	31	21060	0	9005	8921	1416	53354	74513	0	36564	38363	6467	164197	1491	1020	471	27160	17756	9404
Dec-2015	30	19758	0	4243	8951	5787	47385	64378	0	35431	34580	14980	187927	1474	1006	468	27174	17789	9385
Jan-2016	13	11158	0	36	4089	9542	24128	59011	0	1156	40967	15757	118408	800	555	245	14394	11122	3272
Feb-2016	13	12257	0	38	4086	7581	32235	55583	0	1096	48425	15522	122955	814	566	248	14748	11448	3300
Mar-2016	23	17516	0	736	5139	4270	39704	77602	0	65956	44718	12021	351649	1534	1082	452	16673	10275	6398
Apr-16	23	17831	0	927	5123	9484	46356	69268	0	66397	30494	14798	139216	1397	986	411	15722	10868	4854
May-16	13	6099	0	1494	613	375	8978	17301	0	66604	19359	193	24060	728	414	314	7334	4375	2959
Jun-16	11	13911	0	989	173	0	10823	28958	0	3648	19416	0	24438	595	366	229	8526	5030	3496
2016-17																			
Jul-Dec	11	44477	0	6716	1496	0	48864	72937	0	28976	103162	0	158194	460	286	175	6541	3559	2982
Jul-2016	7	5758	0	837	222	0	5652	11474	0	2166	20769	0	14824	408	238	170	4588	2568	2020
Aug-2016	13	7793	0	963	221	0	9937	14439	0	4193	20606	0	72690	629	402	227	10812	5185	5627
Sep-2016	11	5998	0	909	231	0	7067	11872	0	2270	20375	0	17116	475	277	198	5484	3123	2361
Oct-2016	12	9949	0	1517	265	0	9318	14406	0	6225	20741	0	19257	492	297	195	5641	3358	2283
Nov-2016	12	10441	0	1645	353	0	12191	16860	0	7553	18130	0	25771	575	356	219	10449	5301	5148
Dec-2016	8	4538	0	845	204	0	4699	3886	0	6569	2541	0	8536	183	144	39	2274	1820	454

PRODUCTION AND EMPLOYMENT IN SUGAR INDUSTRY IN KHYBER PAKHTUNKHWA

Annexure-XI

Year/ Month	No. of Report ing Unit	Production in (M.Ton)	Value (Rs. in 000)	Employment (Nos)			Salaries/Wages Paid (Rs. in 000)		
				Total	Production	Non- Production	Total	Production	Non- Production
2000-01	4	53072	276000	1495	724	771	3186	2281	905
2001-02	3	129357	12870	1653	917	736	2738	1988	750
2002-03	4	110764	557310	1945	941	1004	3267	2503	764
2003-04	4	199034	1191019	1849	988	861	4885	3839	1046
2004-05	2	104834	856026	2013	947	1066	4870	2778	2092
2005-06	3	94545	250058	1271	801	470	2993	1988	1005
2006-07	3	87243	1100069	1383	720	663	4447	2784	1663
2007-08	4	66772	312176	1242	786	456	7050	5485	1565
2008-09	3	32937	525374	1170	679	491	7172	4867	2305
2009-10	4	9140	362177	561	313	248	3897	2465	1432
2010-11	6	180943	983216	911	614	297	3983	2811	1172
2011-12	6	203410	391623	2370	1551	819	9070	6320	2750
2012-13	3	62820	501984	1061	725	336	14187	9641	4546
2013-14	5	179051	95608	1517	962	555	12915	8509	4406
2014-15	3	118350	0	2032	1290	742	11598	7411	4187
2015-16	4	267349	0	2328	1495	833	17883	11122	6761
Jul-Dec	3	50530	0	1456	904	552	15026	9272	5754
Jul-2015	2	0	0	1057	724	333	12200	8296	3904
Aug-2015	2	0	0	1057	724	333	12200	8296	3904
Sep-2015	2	0	0	768	411	357	9057	4991	4066
Oct-2015	3	0	0	1138	645	493	16333	9548	6785
Nov-2015	3	4310	0	1264	717	547	19710	11874	7836
Dec-2015	5	46220	0	3452	2205	1247	20656	12627	8029
Jan-2016	5	80815	0	3465	2209	1256	21041	12883	8158
Feb-2016	5	66410	0	3459	2203	1256	21116	12909	8207
Mar-2016	5	38563	0	3198	2121	1077	21116	12909	8207
Apr-2016	5	31031	0	3202	2122	1080	21118	12880	8238
May-2016	2	0	0	2941	1930	1011	20022	13126	6896
Jun-2016	2	0	0	2941	1930	1011	20022	13126	6896
2016-17 Jul-Dec	2	8495	0	2388	1561	827	20954	13296	7659
Jul-2016	2	0	0	2941	1930	1011	20022	13126	6896
Aug-2016	2	0	0	2941	1930	1011	20022	13126	6896
Sep-2016	2	0	0	2941	1930	1011	20022	13126	6896
Oct-2016	2	0	0	2941	1930	1011	20022	13126	6896
Nov-2016	2	4020	0	1280	820	460	22678	12926	9752
Dec-2016	2	4475	0	1283	824	459	22959	14343	8616

PRODUCTION AND EMPLOYMENT IN VEGETABLE GHEE INDUSTRY IN KHYBER PAKHTUNKHWA

Annexure-XI

Year/ Month	No. of Reporting Unit	Production in M.Ton		Value in (Rs.000)		Employment (Nos)			Salaries/Wages Paid (Rs.000)		
		Cooking Oil	Ghee	Cooking Oil	Ghee	Total	Production	Non- Production	Total	Production	Non- Production
2000-01	6	1999	187487	60236	5601981	435	286	149	541	383	158
2001-02	6	9172	187148	281364	4566407	636	458	178	1500	996	504
2002-03	9	9641	200537	376860	7075981	768	510	258	2234	1408	826
2003-04	11	12832	219041	348544	7691288	834	574	260	1346	803	543
2004-05	12	30891	279477	785893	10275069	1185	824	361	2742	1675	1067
2005-06	12	32348	358908	1404160	14933715	1244	822	422	3848	2401	1447
2006-07	16	27744	338729	1239675	17568118	1242	864	378	4471	2685	1786
2007-08	20	31580	338872	1274201	21077720	865	597	268	4226	2324	1902
2008-09	17	37043	311226	2217129	26340529	1194	894	300	6065	4371	1694
2009-10	13	24994	236154	1642280	20094776	1057	717	340	5450	3296	2154
2010-11	17	29730	252036	2316211	26867917	948	695	253	6230	4119	2111
2011-12	25	40840	283911	4949648	37218122	1010	751	259	6701	4453	2248
2012-13	18	45350	263526	6507833	36114625	1068	811	257	7721	5201	2520
2013-14	15	60959	246177	7608140	32441348	1055	826	229	9562	6782	2780
2014-15	14	52809	232061	6388015	27216805	1059	821	238	10520	7483	3037
2015-16	15	48539	194963	5627735	20779630	1047	763	284	9812	6655	3157
Jul-Dec	13	29894	96134	3150220	9617535	1031	766	265	8033	5078	2955
Jul-2015	14	4537	16300	348782	1629421	1100	796	304	8972	5609	3363
Aug-2015	14	4298	17789	302868	1707073	1102	799	303	9189	5822	3367
Sep-2015	11	3974	12922	454767	1433251	992	717	275	8617	5367	3250
Oct-2015	12	7983	16807	964722	1951474	1015	794	221	6487	3837	2650
Nov-2015	12	6964	16757	858266	1369558	989	776	213	6194	3655	2539
Dec-2015	12	2138	15559	220815	1526758	990	715	275	8737	6177	2560
Jan-2016	12	2658	13821	311460	1402989	985	712	273	10914	7802	3112
Feb-2016	11	2809	15916	287837	1776667	1036	749	287	9467	6716	2751
Mar-2016	13	3837	17101	489172	1889343	1089	778	311	12818	9092	3726
Apr-2016	13	2853	16917	477614	1882242	1055	750	305	12849	9185	3664
May-2016	14	3570	18029	507996	1932102	1101	782	319	12717	9003	3714
Jun-2016	14	2918	17045	403436	2278752	1103	786	317	10783	7593	3190
2016-17 Jul-Dec	14	22404	110889	2742671	11134875	1098	779	320	12169	8617	3552
Jul-2016	14	2603	18478	378686	2073054	1102	785	317	10632	7507	3125
Aug-2016	15	3470	16217	483318	1752358	1105	784	321	10730	7560	3170
Sep-2016	14	3856	17370	475076	1629575	1101	779	322	12669	8928	3741
Oct-2016	15	3312	16960	397274	1552356	1093	774	319	13140	9361	3779
Nov-2016	14	4517	20916	497167	2060195	1095	775	320	12921	9176	3745
Dec-2016	14	4646	20948	511150	2067337	1094	774	320	12924	9172	3752

